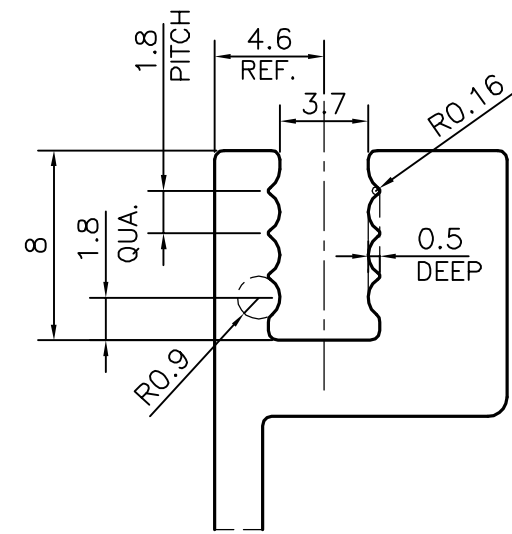
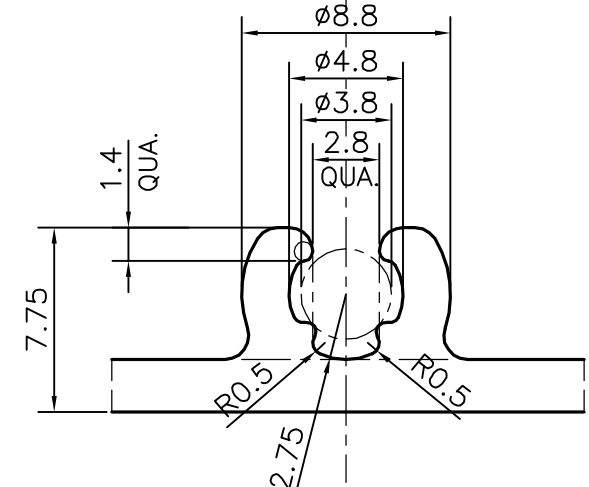


SCALE: - 1:1

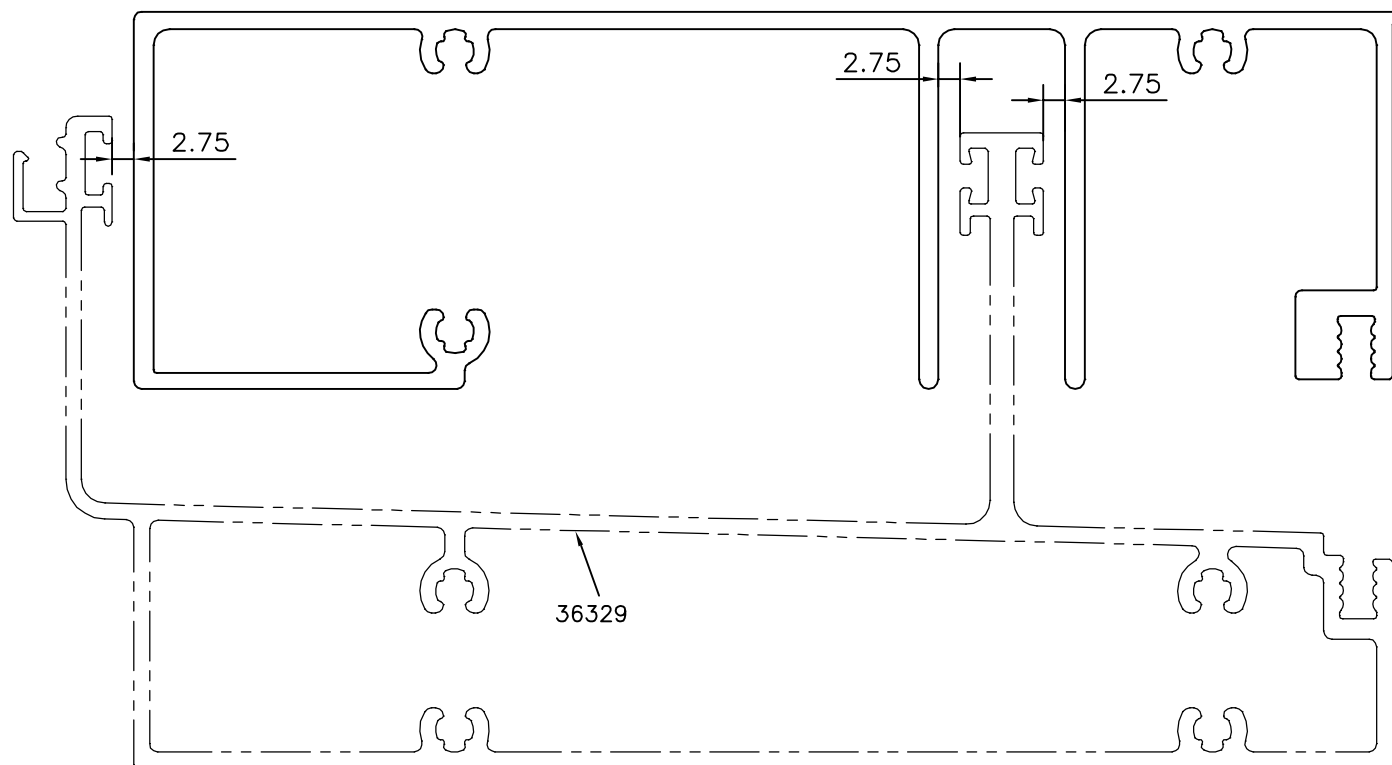
APPROXIMATE WEIGHT RANGE - 2.412 - 3.174 kg/m



SCALE: - 3:1
DETAIL OF "A"



SCALE: - 3:1
DETAIL OF "B"



- * = 1 MM RADIUS (21 PLACES)
- F = FULL RADIUS (2 PLACES)
- R = 2MM RADIUS (6 PLACES)

TOLERANCES ON OVERALL WIDTHS & WIDTHS ACROSS FLATS OF BARS, & REGULAR SECTIONS			
UPTO 6.40mm - ±0.20	UPTO 32.0mm - ±0.38	UPTO 120.0mm - ±0.85	1. STRAIGHTNESS=1.7mm/M 2. TWIST=1.7mm/M 3. ANGULARITY= ±2° 4. FLATNESS =0.007xWIDTH
UPTO 10.0mm - ±0.23	UPTO 50.0mm - ±0.46	UPTO 160.0mm - ±1.02	
UPTO 12.0mm - ±0.25	UPTO 60.0mm - ±0.53	UPTO 200.0mm - ±1.14	
UPTO 16.0mm - ±0.28	UPTO 80.0mm - ±0.69	UPTO 250.0mm - ±1.40	
UPTO 25.0mm - ±0.30	UPTO 100.0mm - ±0.75	UPTO 300.0mm - ±1.65	

<p>SYMBOL OF QUALITY AN ISO 9001 COMPANY</p>	<p>JINDAL ALUMINIUM LTD. BANGALORE-560073 (INDIA)</p>	NAME	DATE
		DRAWN	PUNITH
<p>1. ALL DIMENSIONS ARE IN mm. 2. ROUND OFF ALL SHARP CORNERS WITH 0.40 mm. 3. TOLERANCES WILL BE AS PER IS:3965-1981 , UNLESS OTHERWISE SPECIFIED</p>		CHECKED	
		APPROVED	B.NATARAJA
<p>PARTY'S NAME</p>		SCALE	1:1
		AREA mm ²	1034.292
<p>PARTY'S DRAWING No.</p>		PERIMETER mm.	868.005
		WEIGHT kg/m	2.793
<p>ALLOY & TEMPER</p>		DRAWING No.	P-22793-2
		SECTION No.	36328
<p>DESCRIPTION</p>			

PARTY'S NAME: AASTHA ALUMINA (P) LIMITED ,GURGAON

PARTY'S DRAWING No.: AA-JC-HT-04

ALLOY & TEMPER: 6063 T6

DESCRIPTION: CURTAIN WALL SECTION-HEAD TRANSOM