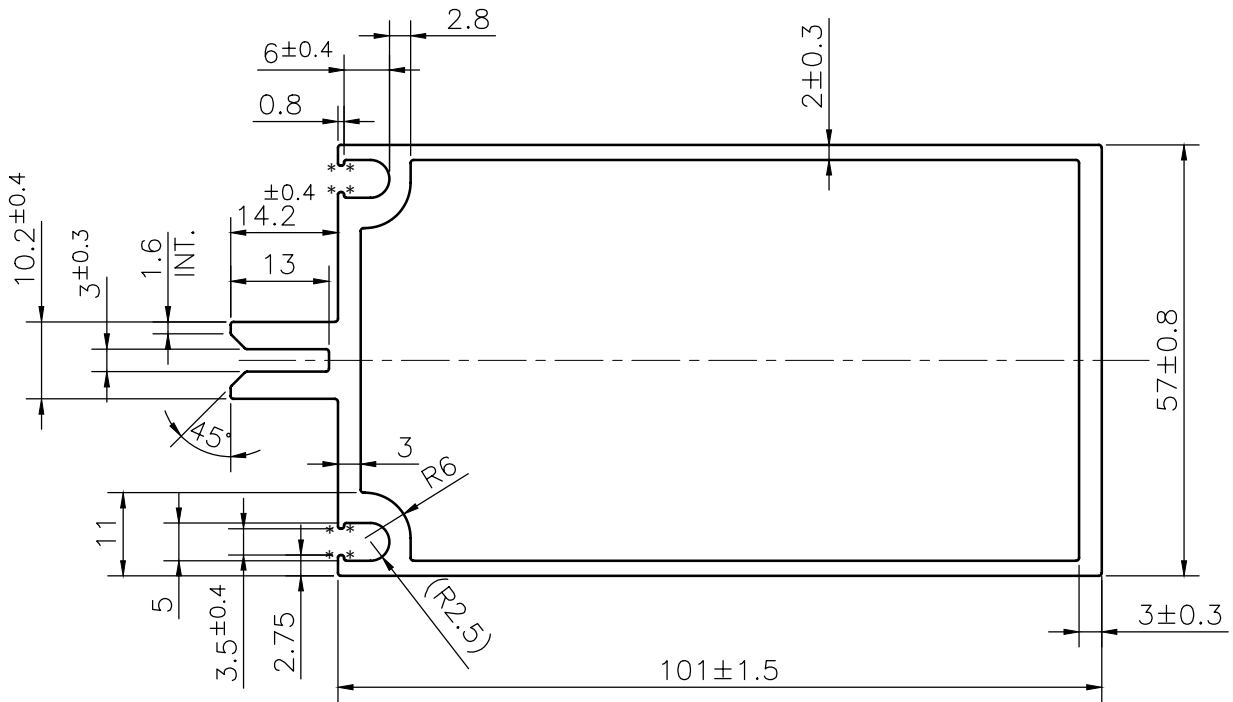


IAL-D-456

36414

**NOTE:-*****= 0.3 RADIUS (8 PLACES)**

1. STRAIGHTNESS= 1.7mm/M
2. TWIST= 1.7mm/M
3. ANGULARITY= $\pm 2^\circ$
4. FLATNESS= 0.007xWIDTH



SYMBOL OF QUALITY
AN ISO 9001 COMPANY

JINDAL ALUMINIUM LTD.
BHIWADI-301019 (INDIA)

	NAME	DATE
DRAWN	S.K.SHARMA	26-02-2024

CHECKED		
APPROVED		

SCALE	1:1
-------	-----

AREA mm ²	867.0
----------------------	-------

PERIMETER mm.	393.634
---------------	---------

WEIGHT kg/m	2.341
-------------	-------

DRAWING No.	SECTION No.
IAL-D-456	-
36414	36414

1. ALL DIMENSIONS ARE IN mm.
2. ROUND OFF ALL SHARP CORNERS WITH 0.40 mm.
3. TOLERANCES WILL BE AS PER BS:EN-755-9 , UNLESS OTHERWISE SPECIFIED

PARTY'S NAME	ALSPAR DELHI
--------------	--------------

PARTY'S DRAWING No.	AS PER DRAWING
---------------------	----------------

ALLOY & TEMPER	HE9 WP	PRODUCT CODE:-055
		HSN CODE:- 76042100

DESCRIPTION	CURTAIN WALL SECTION
-------------	----------------------