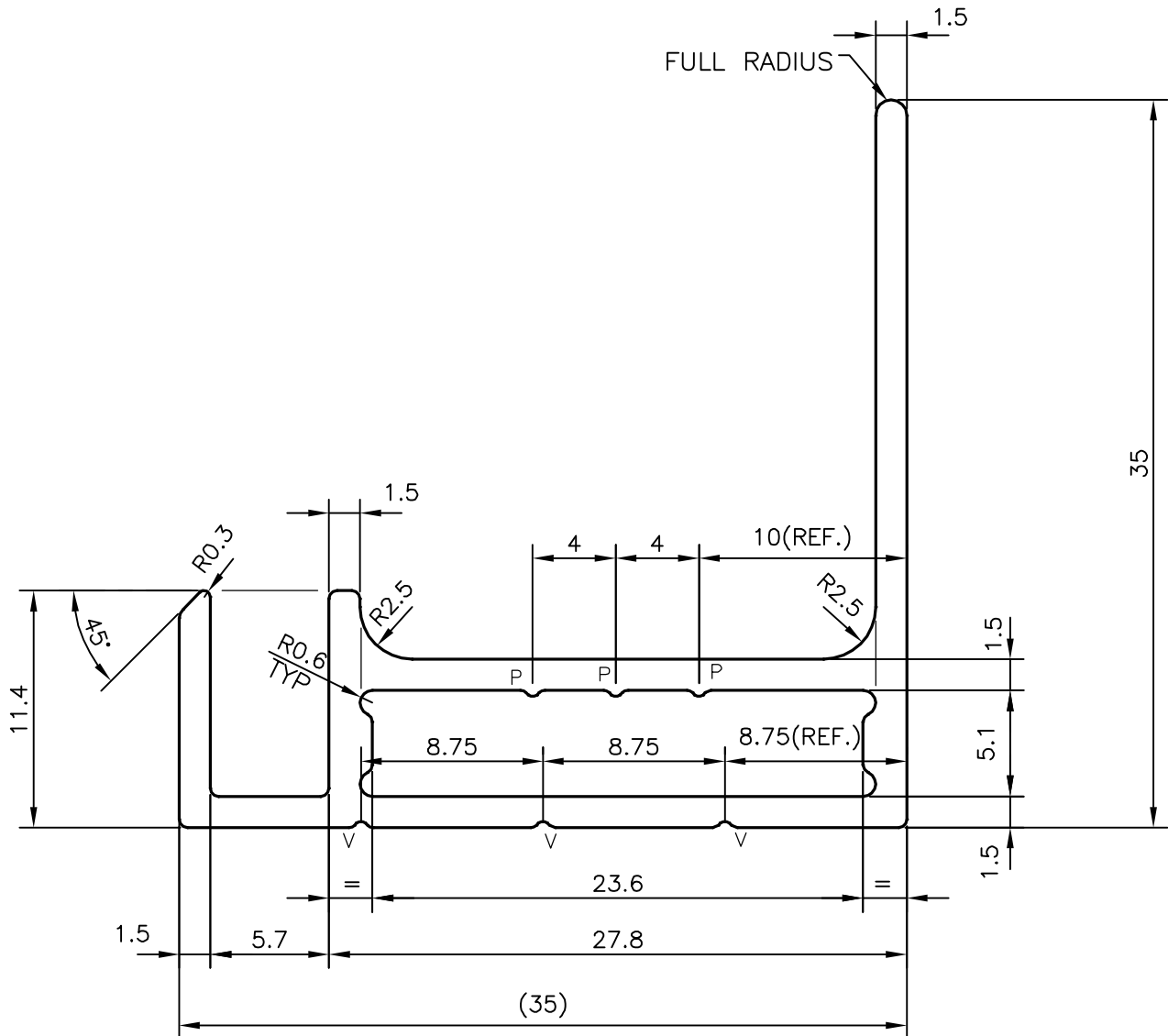
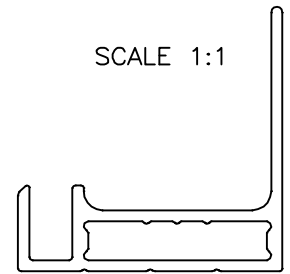


P-15280-1

S4721

38006

SCALE 1:1



V = V GROOVE 0.30x90°(3 PLACES)
P = PIP 0.30x90°(3 PLACES)



SYMBOL OF QUALITY
AN ISO 9001 COMPANY

JINDAL ALUMINIUM LTD.
BANGALORE-560073 (INDIA)

	NAME	DATE
DRAWN	J.P.KAUSHIK	02-11-2015
CHECKED		
APPROVED	S.S.GARG	04-11-2015
SCALE		3:1
AREA mm ²		175.206
PERIMETER mm.		162.346
WEIGHT kg/m		0.473
DRAWING No.	SECTION No.	
P-15280-1	-	
S4721	S4721	
38006	38006	

1. ALL DIMENSIONS ARE IN mm.
2. ROUND OFF ALL SHARP CORNERS WITH 0.40 mm.
3. TOLERANCES WILL BE AS PER IS:6477-1983 UNLESS OTHERWISE SPECIFIED

PARTY'S NAME	SOLTEK PHOTOVOLTEK PVT.LTD., VIJAYWADA
PARTY'S DRAWING No.	AS PER AutoCAD DRAWING
ALLOY & TEMPER	HE9 WP
DESCRIPTION	SOLAR SECTION