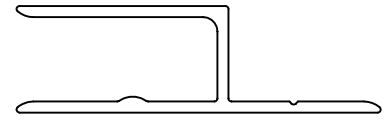


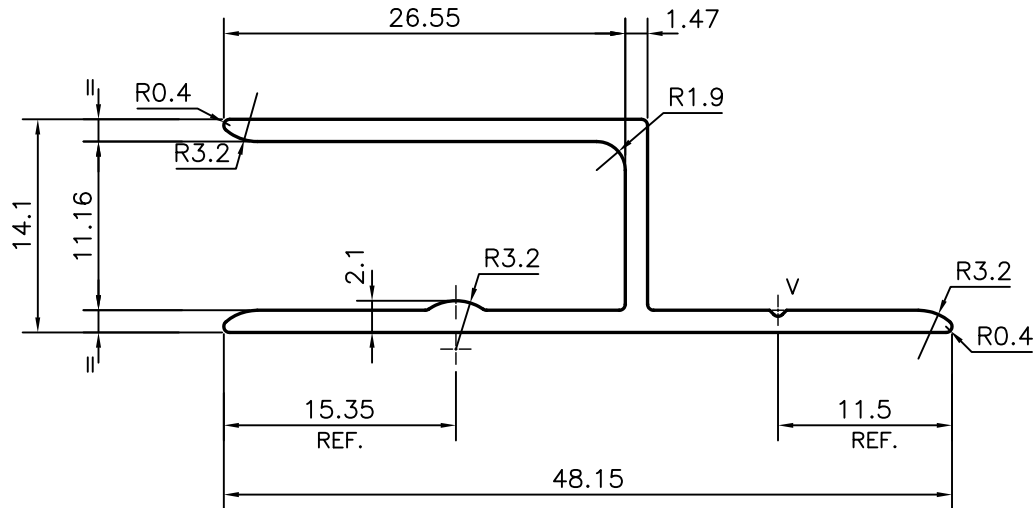
P-13545

S4101

38508



SCALE: - 1:1



**ISSUE (2) :- PROFILE & DIMENSIONS CHANGED  
AS PER CUSTOMER REQUIREMENT.**

V = VEE GROOVE 0.4x90° (1 PLACE)

TOLERANCES ON OVERALL WIDTHS & WIDTHS ACROSS FLATS OF BARS, & REGULAR SECTIONS

|                     |                      |                      |   |
|---------------------|----------------------|----------------------|---|
| UPTO 6.40mm - ±0.20 | UPTO 32.0mm - ±0.38  | UPTO 120.0mm - ±0.85 | 1. STRAIGHTNESS=1.7mm/M<br>2. TWIST=1.7mm/M<br>3. ANGULARITY= ±2°<br>4. FLATNESS =0.007xWIDTH |
| UPTO 10.0mm - ±0.23 | UPTO 50.0mm - ±0.46  | UPTO 160.0mm - ±1.02 |   |
| UPTO 12.0mm - ±0.25 | UPTO 60.0mm - ±0.53  | UPTO 200.0mm - ±1.14 |   |
| UPTO 16.0mm - ±0.28 | UPTO 80.0mm - ±0.69  | UPTO 250.0mm - ±1.40 |   |
| UPTO 25.0mm - ±0.30 | UPTO 100.0mm - ±0.75 | UPTO 300.0mm - ±1.65 |   |



SYMBOL OF QUALITY  
AN ISO 9001 COMPANY

**JINDAL ALUMINIUM LTD.**  
BANGALORE-560073 (INDIA)

|          | NAME     | DATE       |
|----------|----------|------------|
| DRAWN    | PARVESH  | 06-09-2014 |
| CHECKED  |          |            |
| APPROVED | S.S.GARG | 12-09-2014 |

1. ALL DIMENSIONS ARE IN mm.
2. ROUND OFF ALL SHARP CORNERS WITH 0.40 mm.
3. TOLERANCES WILL BE AS PER IS:3965-1981, UNLESS OTHERWISE SPECIFIED

|                      |         |
|----------------------|---------|
| SCALE                | 2:1     |
| AREA mm <sup>2</sup> | 128.567 |
| PERIMETER mm.        | 174.263 |
| WEIGHT kg/m          | 0.347   |

|                     |                                |
|---------------------|--------------------------------|
| PARTY'S NAME        | SAVEER BIOTECH LTD., NOIDA     |
| PARTY'S DRAWING No. | AS PER AUTOCAD DRAWING-SBBN-37 |
| ALLOY & TEMPER      | 6063 T6                        |
| DESCRIPTION         | ARCHITECTURAL SECTION          |

| DRAWING No. | SECTION No.    |
|-------------|----------------|
| P-13545     | -              |
| S4101       | S4101(ISSUE-2) |
| 38508       | 38508          |