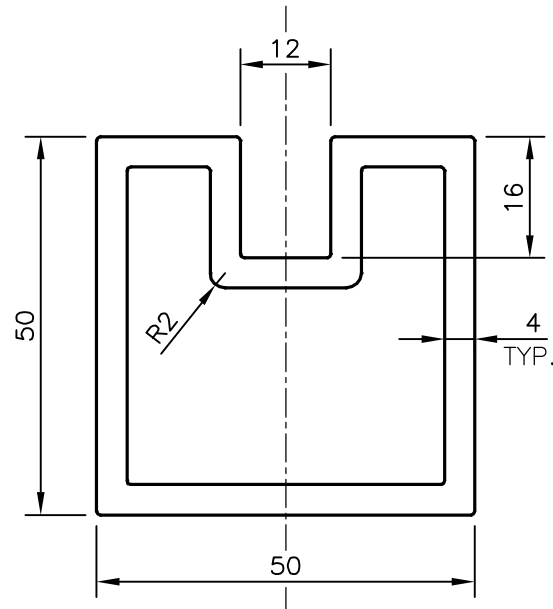


P-16671

S5254

38573




## TOLERANCES ON OVERALL DIMENSIONS OF HOLLOW SECTIONS

UPTO 20.0mm -  $\pm 0.30$   
 UPTO 30.0mm -  $\pm 0.38$   
 UPTO 40.0mm -  $\pm 0.45$   
 UPTO 50.0mm -  $\pm 0.52$   
 UPTO 60.0mm -  $\pm 0.60$

UPTO 80.0mm -  $\pm 0.70$   
 UPTO 100.0mm -  $\pm 0.80$   
 UPTO 120.0mm -  $\pm 0.90$   
 UPTO 140.0mm -  $\pm 1.00$   
 UPTO 160.0mm -  $\pm 1.14$

UPTO 180.0mm -  $\pm 1.27$   
 UPTO 200.0mm -  $\pm 1.40$   
 UPTO 225.0mm -  $\pm 1.52$

1. STRAIGHTNESS=1.7mm/M  
 2. TWIST=1.7mm/M  
 3. ANGULARITY=  $\pm 2^\circ$   
 4. FLATNESS =0.006xWIDTH

 SYMBOL OF QUALITY AN ISO 9001 COMPANY	<b>JINDAL ALUMINIUM LTD.</b> <b>BANGALORE-560073 (INDIA)</b>	DRAWN	KIRAN	29-12-2016	
		CHECKED			
		APPROVED	B.NATARAJ	11-01-2017	
1. ALL DIMENSIONS ARE IN mm. 2. ROUND OFF ALL SHARP CORNERS WITH 0.50 mm. 3. TOLERANCES WILL BE AS PER IS:6477-1983 UNLESS OTHERWISE SPECIFIED		SCALE		1:1	
		AREA mm <sup>2</sup>		862.39	
		PERIMETER mm.		230.283	
PARTY'S NAME		S&T INTERIORS & CONTRACTING SERVICES, BANGALORE		WEIGHT kg/m	2.328
		PARTY'S DRAWING No.		AS PER SAMPLE	DRAWING No.
ALLOY & TEMPER		6063 T6		P-16671	
				S5254	S5254
DESCRIPTION		MISC. SECTION		38573	38573