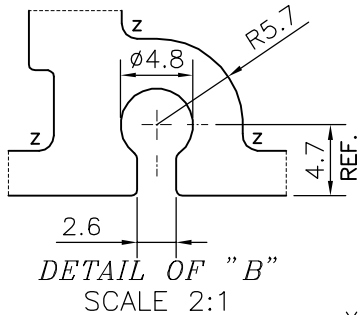
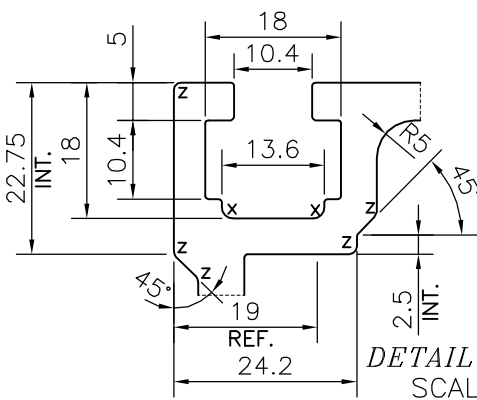
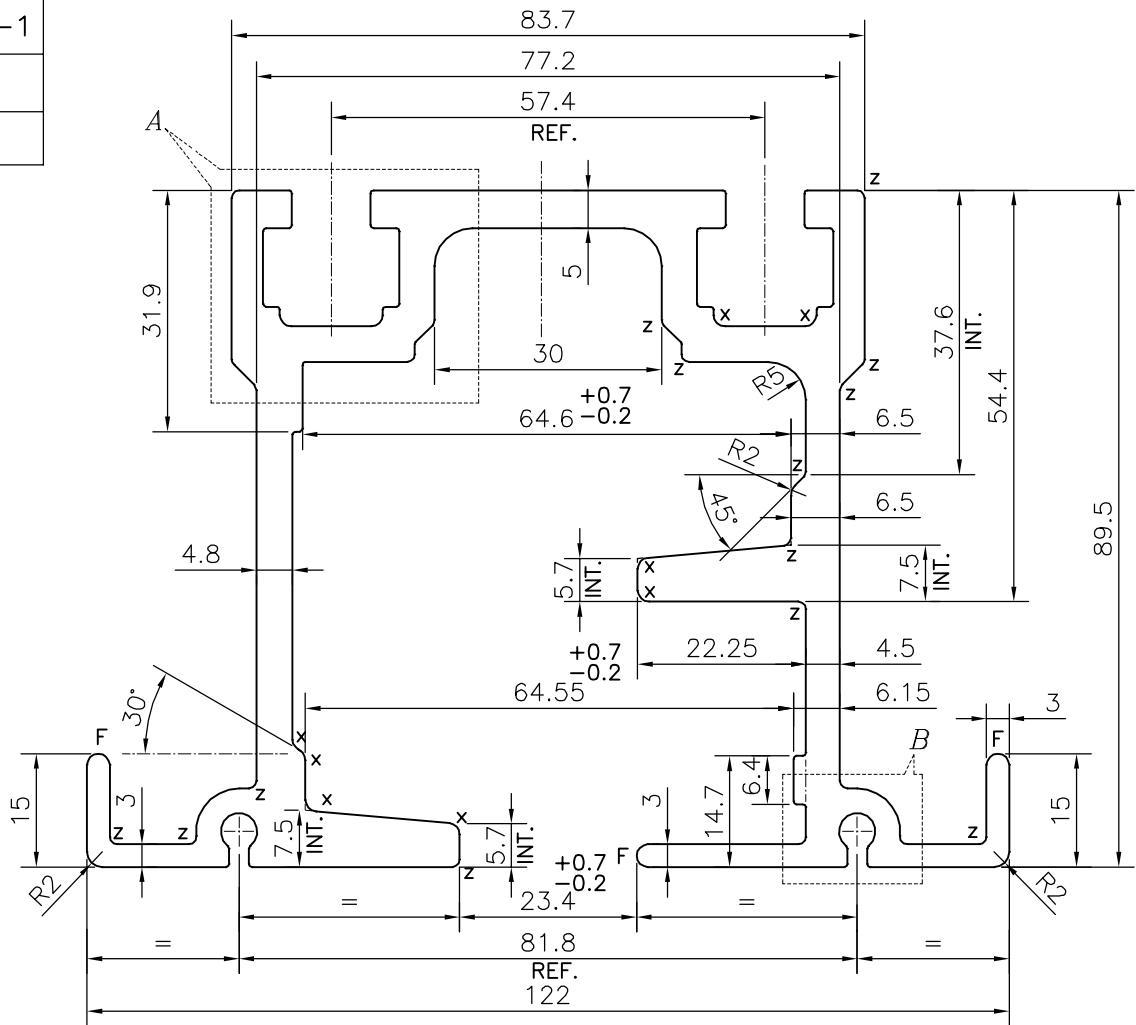


P-16039-1
S5036
38650



X = RADIUS 1.5 mm. (9 PLACES)
Z = RADIUS 1 mm. (18 PLACES)
F = FULL RADIUS (3 PLACES)

TOLERANCES ON OVERALL WIDTHS & WIDTHS ACROSS FLATS OF BARS, & REGULAR SECTIONS

UPTO 6.40mm - ±0.20	UPTO 32.0mm - ±0.38	UPTO 120.0mm - ±0.85	1. STRAIGHTNESS=1.7mm/M 2. TWIST=1.7mm/M 3. ANGULARITY= ±2° 4. FLATNESS =0.007xWIDTH
UPTO 10.0mm - ±0.23	UPTO 50.0mm - ±0.46	UPTO 160.0mm - ±1.02	
UPTO 12.0mm - ±0.25	UPTO 60.0mm - ±0.53	UPTO 200.0mm - ±1.14	
UPTO 16.0mm - ±0.28	UPTO 80.0mm - ±0.69	UPTO 250.0mm - ±1.40	
UPTO 25.0mm - ±0.30	UPTO 100.0mm - ±0.75	UPTO 300.0mm - ±1.65	

	JINDAL ALUMINIUM LTD. BANGALORE-560073 (INDIA)	NAME	DATE
		DRAWN	PARVESH 16-07-2016
		CHECKED	
		APPROVED	S.S. GARG 20-07-2016
		SCALE	1:1
		AREA mm ²	2122.557
		PERIMETER mm.	876.413
		WEIGHT kg/m	5.731
		DRAWING No.	SECTION No.
		P-16039-1	-
		S5036	S5036
		38650	38650
PARTY'S NAME	AETMAAD ENTERPRISES, MUMBAI		
PARTY'S DRAWING No.	AS PER SAMPLE & REQUIREMENT		
ALLOY & TEMPER	6063 T6		
DESCRIPTION	ARCHITECTURAL SECTION		