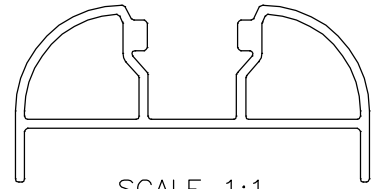


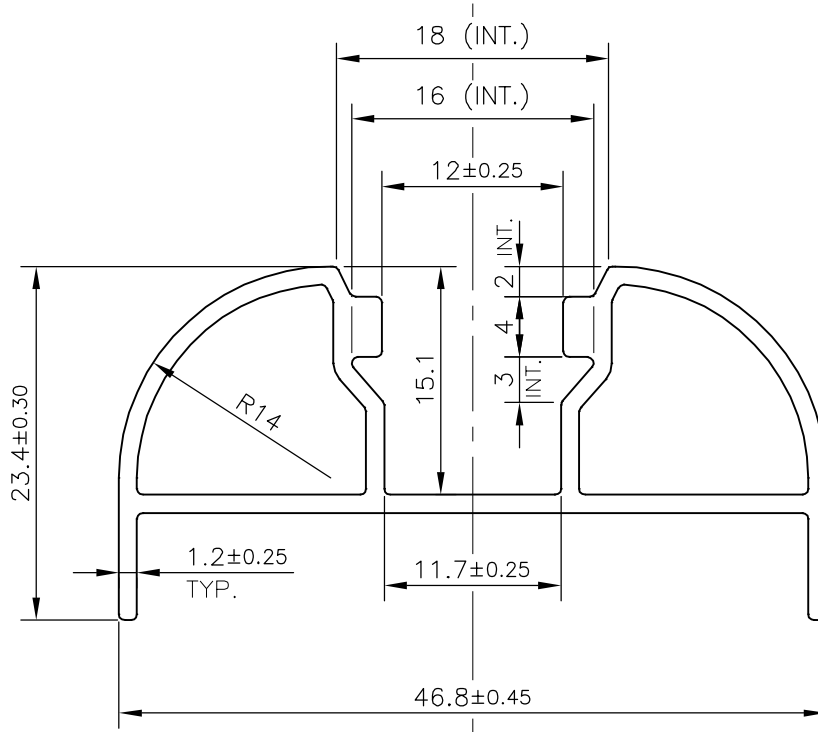
P-16631

S5244

38674



SCALE 1:1



TOLERANCES ON OVERALL DIMENSIONS OF HOLLOW SECTIONS

UPTO 20.0mm - ±0.30	UPTO 80.0mm - ±0.70	UPTO 180.0mm - ±1.27	1. STRAIGHTNESS=1.7mm/M 2. TWIST=1.7mm/M 3. ANGULARITY= ±2° 4. FLATNESS =0.006xWIDTH
UPTO 30.0mm - ±0.38	UPTO 100.0mm - ±0.80	UPTO 200.0mm - ±1.40	
UPTO 40.0mm - ±0.45	UPTO 120.0mm - ±0.90	UPTO 225.0mm - ±1.52	
UPTO 50.0mm - ±0.52	UPTO 140.0mm - ±1.00		
UPTO 60.0mm - ±0.60	UPTO 160.0mm - ±1.14		



SYMBOL OF QUALITY  
AN ISO 9001 COMPANY

**JINDAL ALUMINIUM LTD.**  
BANGALORE-560073 (INDIA)

	NAME	DATE
DRAWN	KIRAN	19-12-2016
CHECKED		
APPROVED	B.NATARAJ	06-01-2017
SCALE		2:1
AREA	mm <sup>2</sup>	179.62
PERIMETER	mm.	173.912
WEIGHT	kg/m	0.485
DRAWING No.	SECTION No.	
P-16631		
S5244	S5244	
38674	38674	

1. ALL DIMENSIONS ARE IN mm.
2. ROUND OFF ALL SHARP CORNERS WITH 0.40 mm.
3. TOLERANCES WILL BE AS PER IS:6477-1983, UNLESS OTHERWISE SPECIFIED

PARTY'S NAME	VELCA RACKING SYSTEMS PVT. LTD., BANGALORE
PARTY'S DRAWING No.	D-5403
ALLOY & TEMPER	6063 T6
DESCRIPTION	MISC. SECTION