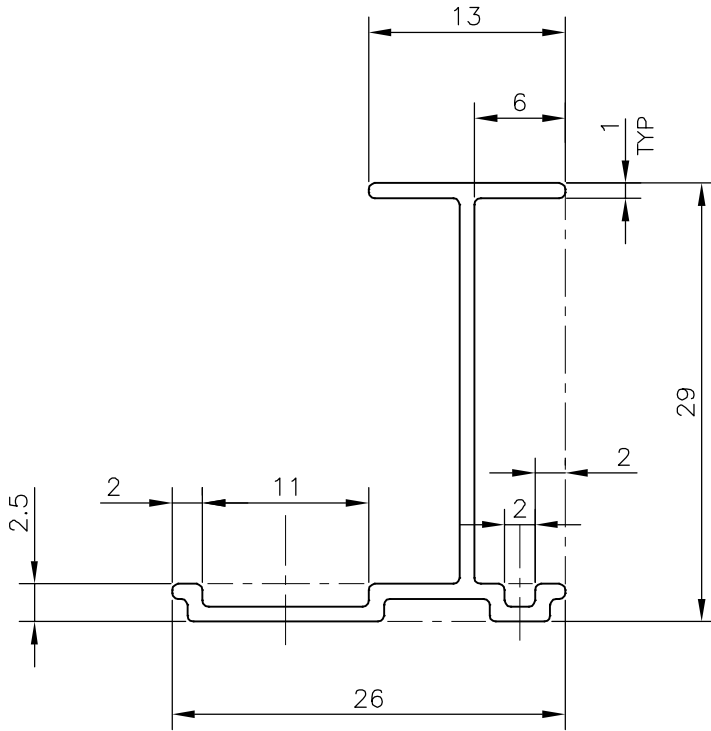
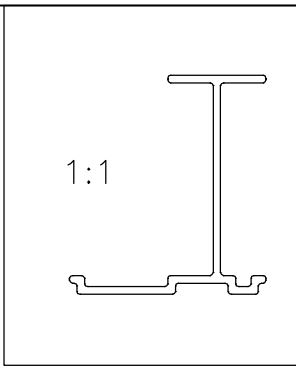



P-16718
S5263
38676



1. STRAIGHTNESS=1.7mm/M
2. TWIST=1.7mm/M
3. ANGULARITY= $\pm 2^\circ$
4. FLATNESS =0.3mm

TOLERANCES ON OVERALL WIDTHS & WIDTHS ACROSS FLATS OF BARS, & REGULAR SECTIONS

UPTO 6.40mm - ± 0.20	UPTO 32.0mm - ± 0.38	UPTO 120.0mm - ± 0.85	UPTO 320.00mm - ± 1.70
UPTO 10.0mm - ± 0.23	UPTO 50.0mm - ± 0.46	UPTO 160.0mm - ± 1.02	
UPTO 12.0mm - ± 0.25	UPTO 60.0mm - ± 0.53	UPTO 200.0mm - ± 1.14	
UPTO 16.0mm - ± 0.28	UPTO 80.0mm - ± 0.69	UPTO 250.0mm - ± 1.40	
UPTO 25.0mm - ± 0.30	UPTO 100.0mm - ± 0.75	UPTO 300.0mm - ± 1.65	

 SYMBOL OF QUALITY AN ISO 9001 COMPANY	JINDAL ALUMINIUM LTD. BANGALORE-560073 (INDIA)	DRAWN	J.P.KAUSHIK	DATE	10-01-2017	
		CHECKED				
		APPROVED	B.NATARAJ		13-01-2017	
1. ALL DIMENSIONS ARE IN mm. 2. ROUND OFF ALL SHARP CORNERS WITH 0.40 mm. 3. TOLERANCES WILL BE AS PER IS:3965-1981 UNLESS OTHERWISE SPECIFIED		SCALE		2:1		
		AREA mm ²		70.363		
		PERIMETER mm.		138.193		
PARTY'S NAME		KOOL PACK & ALLIED INDUSTRIES, SOLAN		WEIGHT kg/m		0.190
PARTY'S DRAWING No.		AS PER DRAWING		DRAWING No.	SECTION No.	
ALLOY & TEMPER		6063 T6		P-16718	-	
DESCRIPTION		MISC. SECTION		S5263	S5263	
				38676	38676	