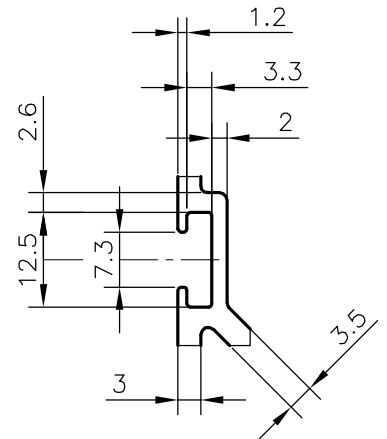
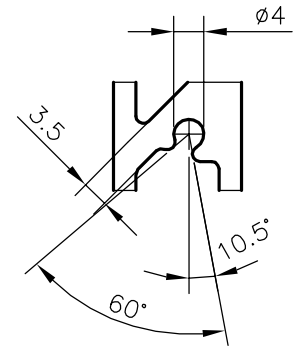
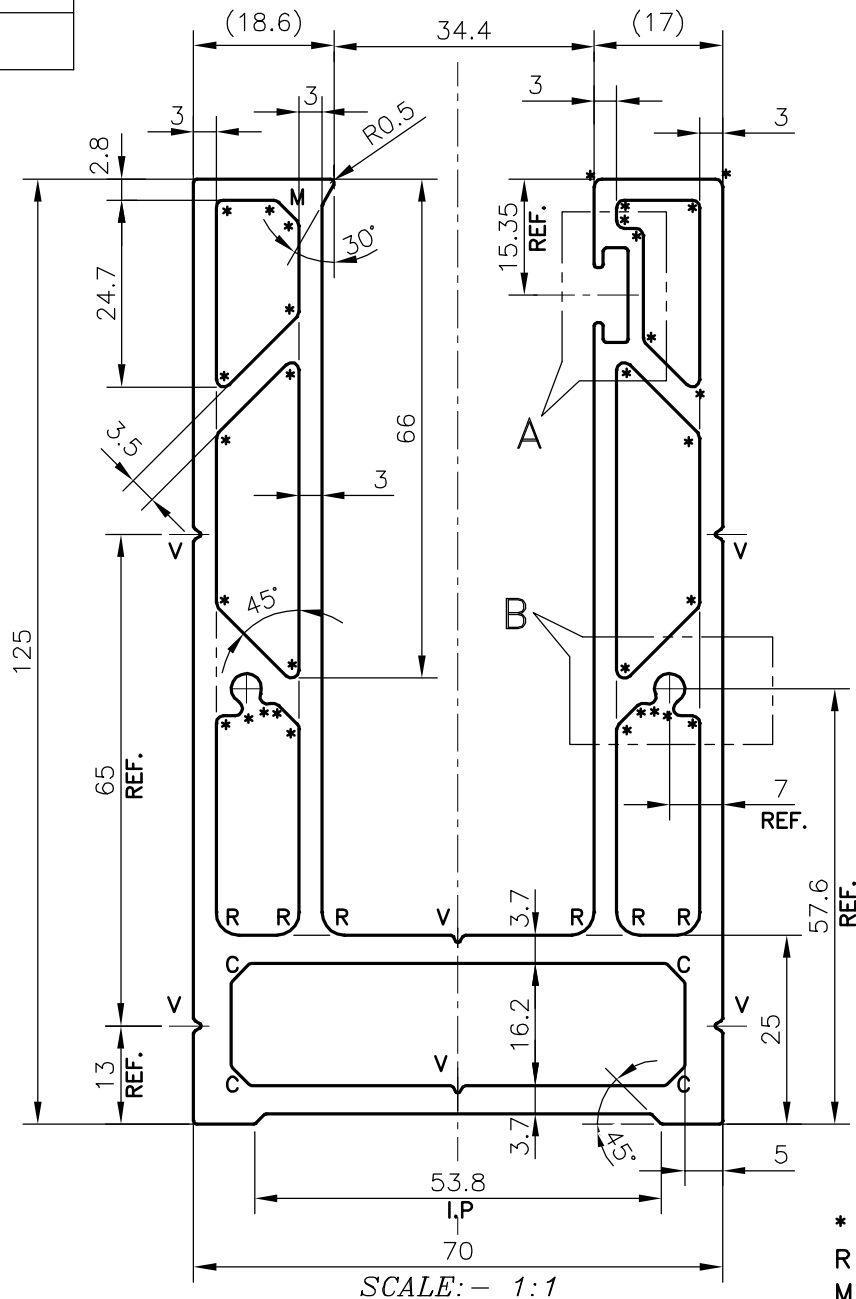


P-21409

38721



- * = 1mm RADIUS (30 PLACES)
- R = 3mm RADIUS (6 PLACES)
- M = 3x45° CHAMFER (1 PLACE)
- C = 2.5x45° CHAMFER (4 PLACES)
- V="V" GROOVE 1x60° (6 PLACES)

TOLERANCES ON OVERALL DIMENSIONS OF HOLLOW SECTIONS

UPTO 20.0mm - ±0.30	UPTO 80.0mm - ±0.70	UPTO 180.0mm - ±1.27	1. STRAIGHTNESS=1.7mm/M 2. TWIST=1.7mm/M 3. ANGULARITY= ±2° 4. FLATNESS =0.006xWIDTH
UPTO 30.0mm - ±0.38	UPTO 100.0mm - ±0.80	UPTO 200.0mm - ±1.40	
UPTO 40.0mm - ±0.45	UPTO 120.0mm - ±0.90	UPTO 225.0mm - ±1.52	
UPTO 50.0mm - ±0.52	UPTO 140.0mm - ±1.00		
UPTO 60.0mm - ±0.60	UPTO 160.0mm - ±1.14		



SYMBOL OF QUALITY
AN ISO 9001 COMPANY

JINDAL ALUMINIUM LTD.
BANGALORE-560073 (INDIA)

	NAME	DATE
DRAWN	DARPAN	02-09-2020
CHECKED		
APPROVED	B.NATARAJA	10/09/2020
SCALE		1:1
AREA mm ²		2263.078
PERIMETER mm.		611.993
WEIGHT kg/m		6.110
DRAWING No.	SECTION No.	
P-21409	-	
38721	38721	

1. ALL DIMENSIONS ARE IN mm.
2. ROUND OFF ALL SHARP CORNERS WITH 0.40 mm.
3. TOLERANCES WILL BE AS PER IS:6477-1983, UNLESS OTHERWISE SPECIFIED

PARTY'S NAME	AAKASH EXTRUSIONS PVT. LTD., MUMBAI
PARTY'S DRAWING No.	AS PER SAMPLE
ALLOY & TEMPER	6063 T6
DESCRIPTION	ARCHITECTURE MISC. SECTION