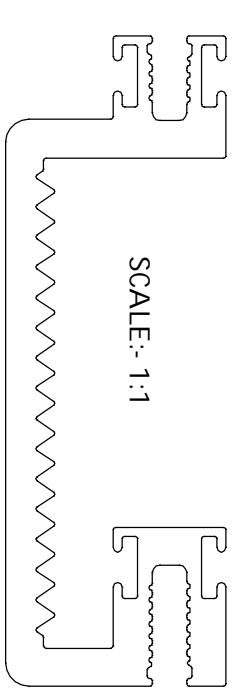
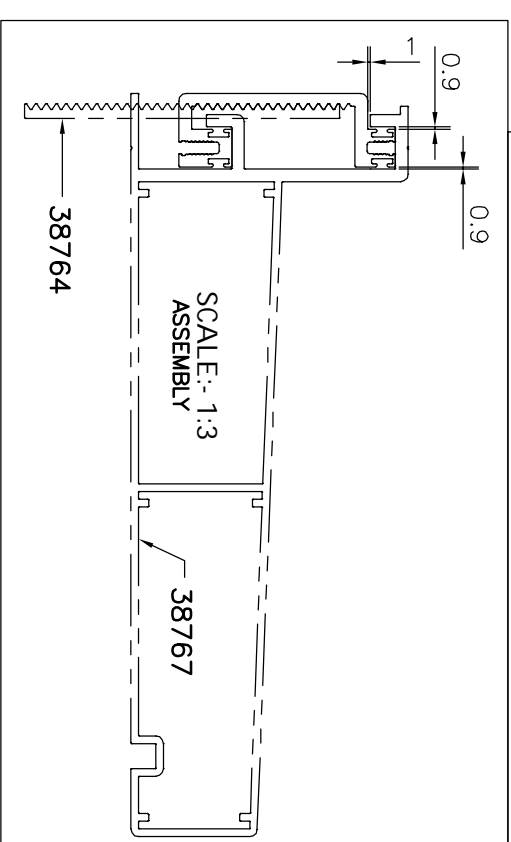


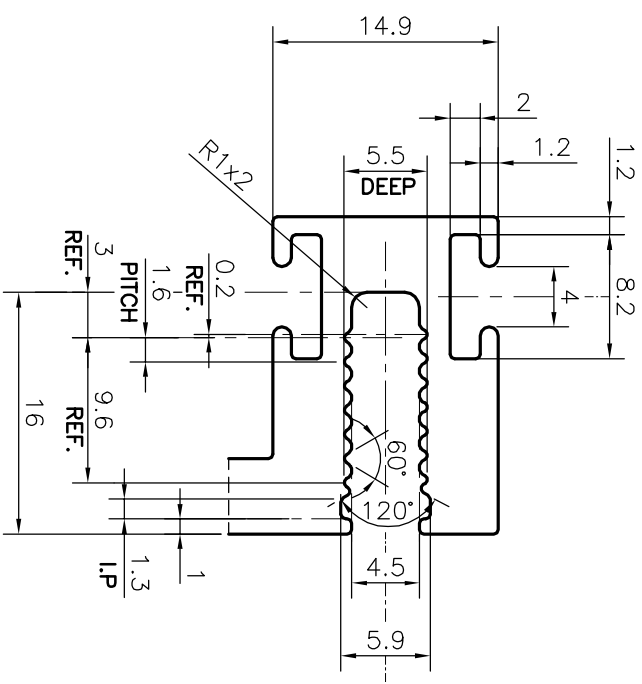
SCALE: 2:1



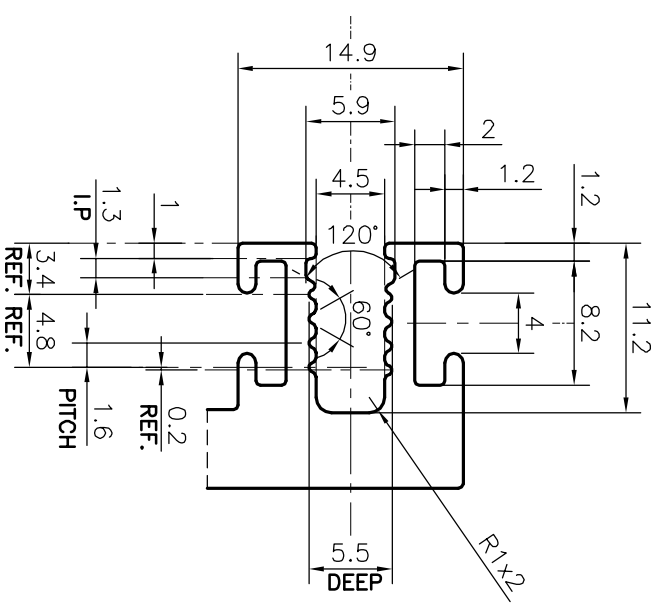
SCALE: 1:1



SCALE: 1:3



SCALE: 2:1
DETAIL OF "B"



SCALE: 2:1
DETAIL OF "A"

APPROXIMATE WEIGHT RANGE - 1.979 - 2.419 kg/m

UNSPECIFIED RADIUS R0.3mm
F = FULL RADIUS (8 PLACES)

TOLERANCES ON OVERALL WIDTHS & WIDTHS ACROSS FLATS OF BARS, & REGULAR SECTIONS

UPTO 6.40mm - ±0.20	UPTO 32.0mm - ±0.38	UPTO 120.0mm - ±0.85
UPTO 10.0mm - ±0.23	UPTO 50.0mm - ±0.46	UPTO 160.0mm - ±1.02
UPTO 12.0mm - ±0.25	UPTO 60.0mm - ±0.53	UPTO 200.0mm - ±1.14
UPTO 16.0mm - ±0.28	UPTO 80.0mm - ±0.69	UPTO 250.0mm - ±1.40
UPTO 25.0mm - ±0.30	UPTO 100.0mm - ±0.75	UPTO 300.0mm - ±1.65

1. STRAIGHTNESS=1.7mm/M
2. TWIST=1.7mm/M
3. ANGULARITY= ±2°
4. FLATNESS =0.007xWIDTH

<p>SYMBOL OF QUALITY AN ISO 9001 COMPANY</p>	<p>JINDAL ALUMINIUM LTD. BANGALORE-560073 (INDIA)</p>	
	DRAWN	DATE
CHECKED	DARPAN	28-11-2020
APPROVED	B.NATARAJA	10-12-2020

1. ALL DIMENSIONS ARE IN mm.
2. ROUND OFF ALL SHARP CORNERS WITH 0.40 mm.
3. TOLERANCES WILL BE AS PER IS:3965-1981, UNLESS OTHERWISE SPECIFIED

PARTY'S NAME	DURALL SYSTEMS INDIA PVT. LTD., MUMBAI	SCALE	2:1
PARTY'S DRAWING No.	SN 02	AREA mm ²	814.5
ALLOY & TEMPER	6063 T6	PERIMETER mm.	463.709
DESCRIPTION	SUNSHADE ADAPTOR SECTION	WEIGHT kg/m	2.199
		DRAWING No.	P-21793-1
		SECTION No.	38768