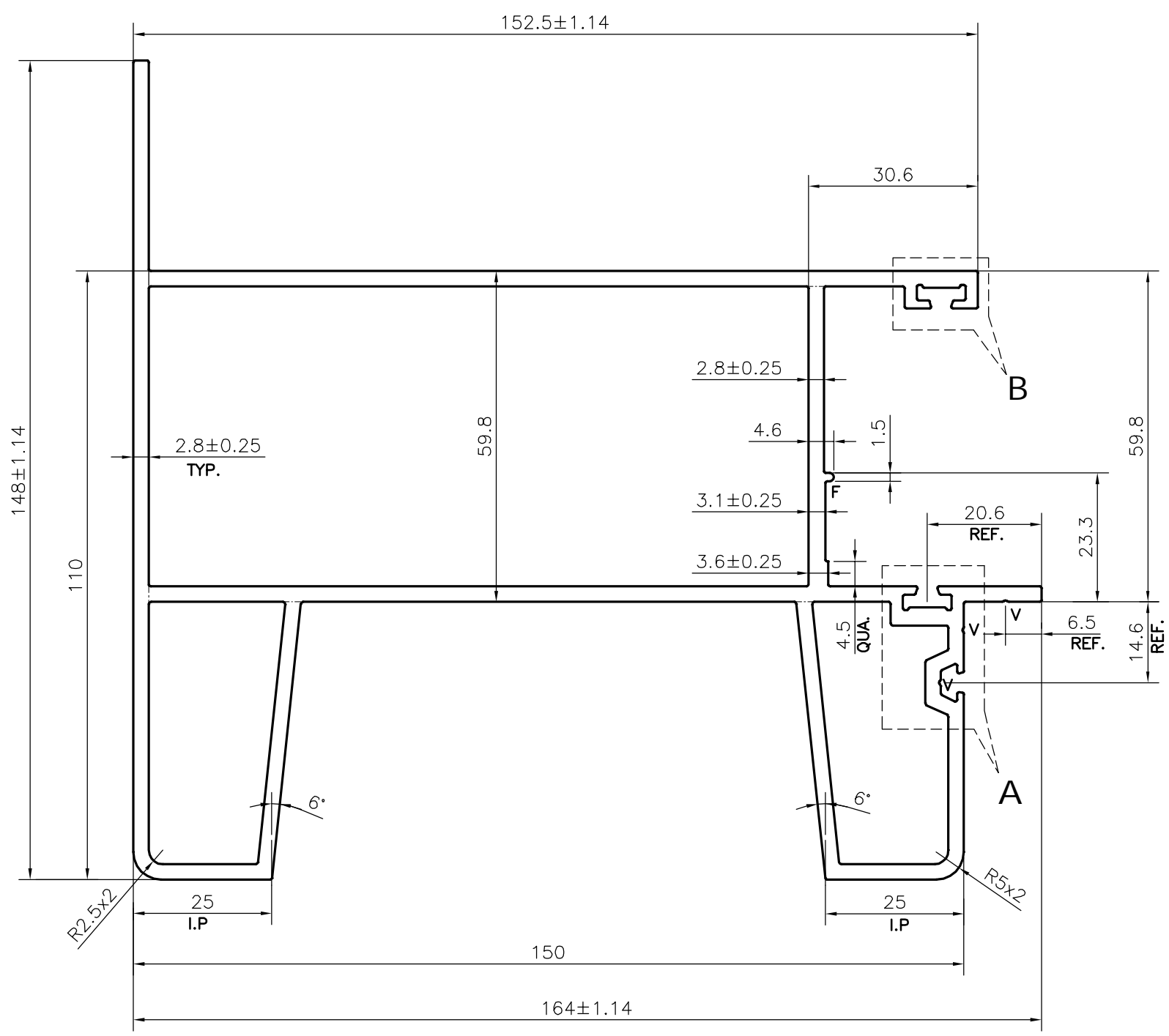
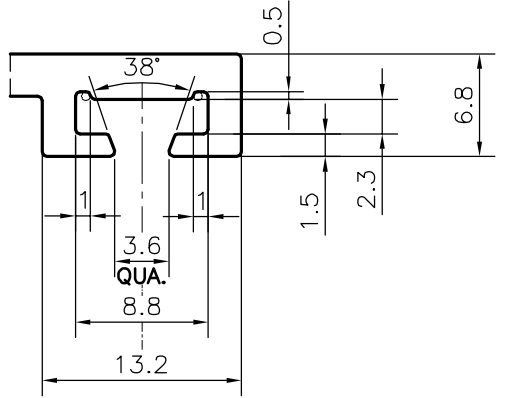


P-21794-1
38769

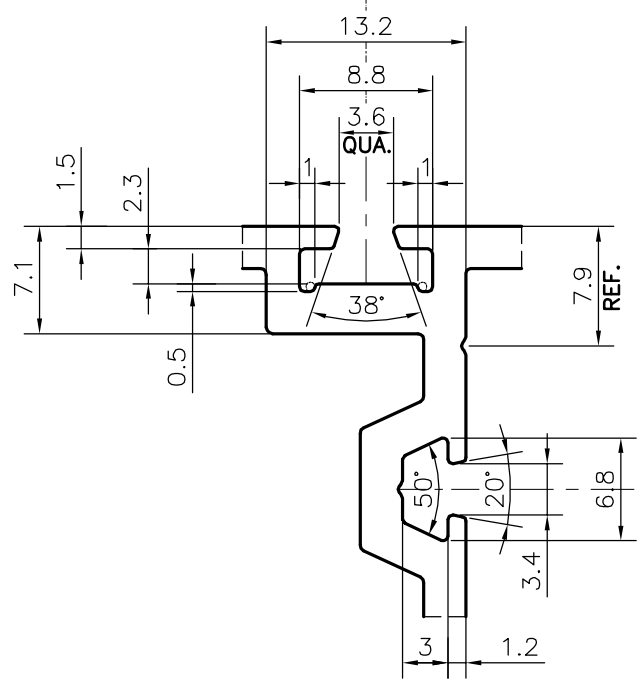


APPROXIMATE WEIGHT RANGE - 4.942 - 6.040 kg/m




SCALE:- 2:1
DETAIL OF "B"

V="V" GROOVE 0.3x90° (3 PLACES)
UNSPECIFIED RADIUS R0.3mm
F = FULL RADIUS (1 PLACE)



SCALE:- 2:1
DETAIL OF "A"

TOLERANCES ON OVERALL DIMENSIONS OF HOLLOW SECTIONS			1. STRAIGHTNESS=1.7mm/M	
UPTO 20.0mm - ±0.30	UPTO 80.0mm - ±0.70	UPTO 180.0mm - ±1.27	2. TWIST=1.7mm/M	
UPTO 30.0mm - ±0.38	UPTO 100.0mm - ±0.80	UPTO 200.0mm - ±1.40	3. ANGULARITY= ±2°	
UPTO 40.0mm - ±0.45	UPTO 120.0mm - ±0.90	UPTO 225.0mm - ±1.52	4. FLATNESS =0.006xWIDTH	
UPTO 50.0mm - ±0.52	UPTO 140.0mm - ±1.00			
UPTO 60.0mm - ±0.60	UPTO 160.0mm - ±1.14			
 SYMBOL OF QUALITY AN ISO 9001 COMPANY	JINDAL ALUMINIUM LTD. BANGALORE-560073 (INDIA)		NAME	DATE
			DRAWN	DARPAN
1. ALL DIMENSIONS ARE IN mm. 2. ROUND OFF ALL SHARP CORNERS WITH 0.40 mm. 3. TOLERANCES WILL BE AS PER IS:6477-1983 UNLESS OTHERWISE SPECIFIED			CHECKED	
			APPROVED	B.NATARAJA
PARTY'S NAME DURALL SYSTEMS INDIA PVT. LTD., MUMBAI			SCALE	1:1
			AREA mm ²	2034.916
PARTY'S DRAWING No. NIB 05			PERIMETER mm.	822.374
			WEIGHT kg/m	5.494
ALLOY & TEMPER 6063 T6			DRAWING No.	SECTION No.
			P-21794-1	-
DESCRIPTION NIB PROFILE STAIRCASE SECTION			38769	38769