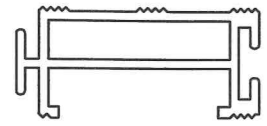
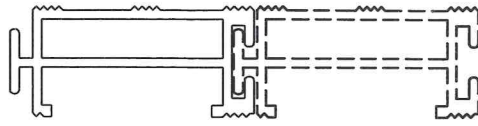
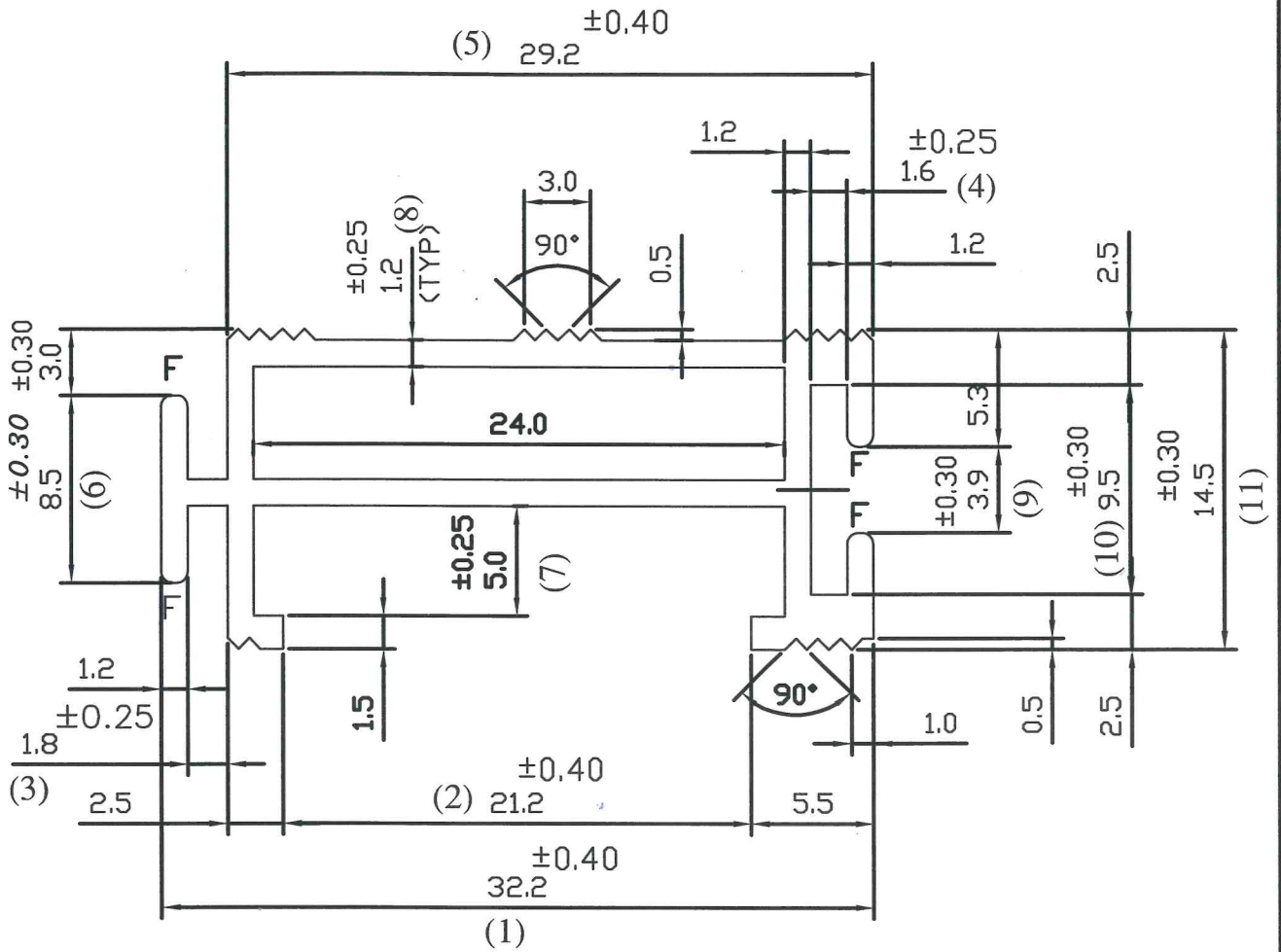


IA-D-7505

38836



SCALE: - 1:1



CONTROLLED COPY

F = FULL RADIUS

TWIST = $\pm 1/4^\circ/300$ mm./mtr.
 FLATNESS = WIDTH X 0.005mm.
 STRAIGHTNESS = 1.50 mm./mtr.
 ANGULARITY = $\pm 1.5^\circ$



SYMBOL OF QUALITY
AN ISO 9001 COMPANY

JINDAL ALUMINIUM LTD.
BANGALORE-560073 (INDIA)

| | NAME | DATE |
|----------|------------|------------|
| DRAWN | PARVESH | 07-12-2021 |
| CHECKED | <i>Rey</i> | 07/12/21 |
| APPROVED | <i>B</i> | 8/12/21 |

1. ALL DIMENSIONS ARE IN mm.
2. ROUND OFF ALL SHARP CORNERS WITH 0.40 mm.
3. TOLERANCES WILL BE AS PER BS:EN-755-9 , UNLESS OTHERWISE SPECIFIED

| | |
|----------------------|---------|
| SCALE | 1:3 |
| AREA mm ² | 128.151 |
| PERIMETER mm. | 146.725 |
| WEIGHT kg/m | 0.346 |

| | | | | | |
|---------------------|-----------------------|-------------|-----------|-------------|-------|
| PARTY'S NAME | EURONICS INDUSTRIES | DRAWING No. | IA-D-7505 | SECTION No. | - |
| PARTY'S DRAWING No. | AS PER DRAWING | | 38836 | | 38836 |
| ALLOY & TEMPER | 6063 T6 | | | | |
| DESCRIPTION | ARCHITECTURAL SECTION | | | | |