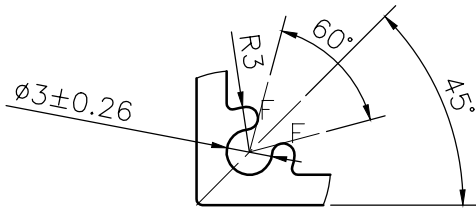
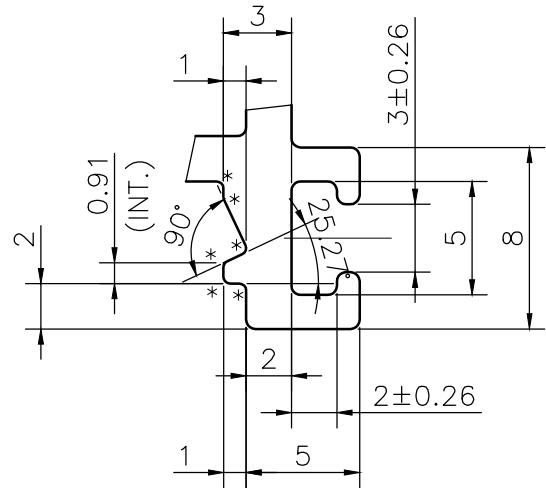


IAL-D-3070

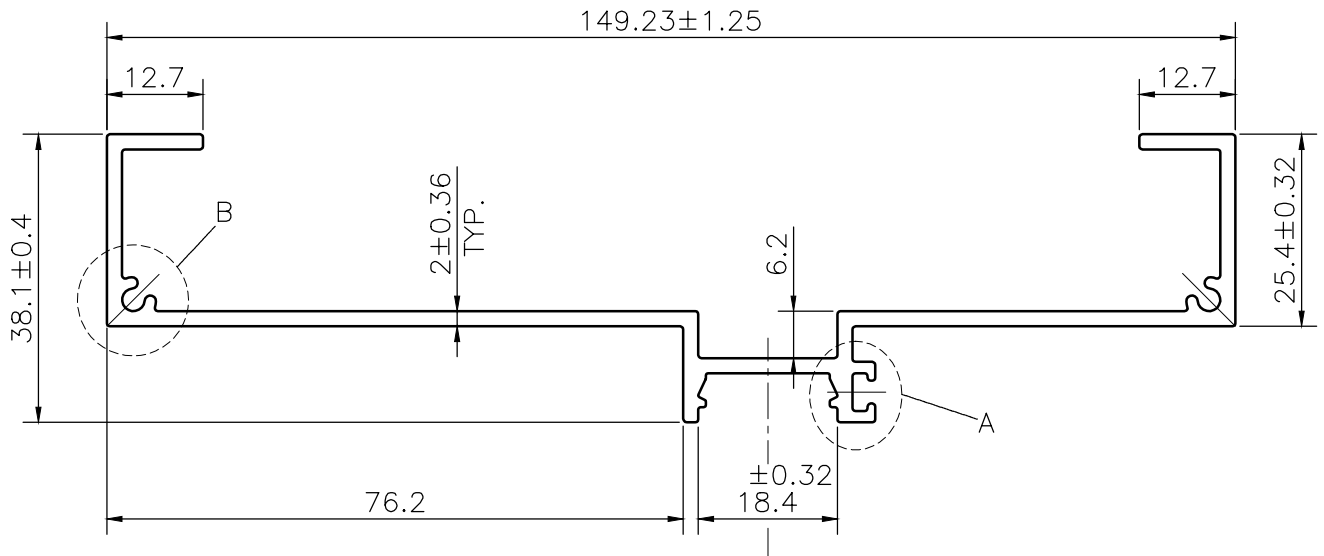
38839



DETAIL AT = B
SCALE : 2:1



DETAIL AT = B
SCALE : 3:1

**NOTE:-*** = **0.3 RADIUS (12 PLACES)**F = **FULL RADIUS (4 PLACES)**

1. STRAIGHTNESS= 1.7mm/M
2. TWIST= 1.7mm/M
3. ANGULARITY= $\pm 2^\circ$
4. FLATNESS= 0.007xWIDTH



SYMBOL OF QUALITY
AN ISO 9001 COMPANY

JINDAL ALUMINIUM LTD.
BHIWADI-301019 (INDIA)

	NAME	DATE
DRAWN	S.K.SHARMA	26-02-2024
CHECKED		
APPROVED		

1. ALL DIMENSIONS ARE IN mm.
2. ROUND OFF ALL SHARP CORNERS WITH 0.40 mm.
3. TOLERANCES WILL BE AS PER BS:EN-755-9, UNLESS OTHERWISE SPECIFIED

PARTY'S NAME	AHLUWALIA CONTRACTS
--------------	---------------------

PARTY'S DRAWING No.	AS PER DRAWING
---------------------	----------------

ALLOY & TEMPER	6063 T6	PRODUCT CODE:-055
		HSN CODE:- 76042990

DESCRIPTION	CURTAIN WALL SECTION
-------------	----------------------

SCALE	1:1
-------	-----

AREA mm ²	516.225
----------------------	---------

PERIMETER mm.	511.52
---------------	--------

WEIGHT kg/m	1.394
-------------	-------

DRAWING No.	SECTION No.
-------------	-------------

IAL-D-3070	-
------------	---

38839	38839
-------	-------