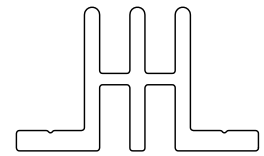
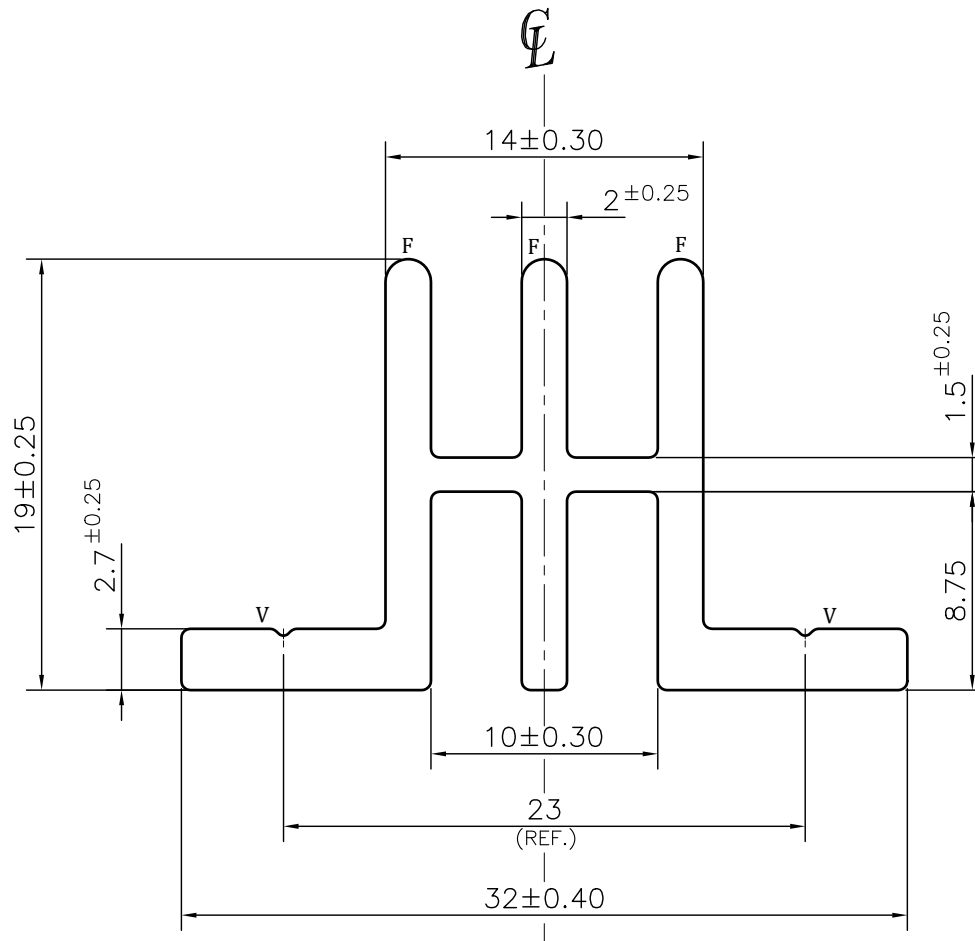


IAL-D-6993

38882



SCALE 1:1

**NOTE:-****F= FULL RADIUS (3 PLACES)****V= 0.30x90° V-GROOVE (2 PLACES)**

1. STRAIGHTNESS= 1.7mm/M
2. TWIST= 1.7mm/M
3. ANGULARITY= $\pm 2^\circ$
4. FLATNESS= 0.007xWIDTH



SYMBOL OF QUALITY
AN ISO 9001 COMPANY

JINDAL ALUMINIUM LTD.
BHIWADI-301019 (INDIA)

	NAME	DATE
DRAWN	ASHUTOSH	23-01-2024
CHECKED		
APPROVED		
SCALE		3:1
AREA mm ²		173.046
PERIMETER mm.		166.71
WEIGHT kg/m		0.467
DRAWING No.	SECTION No.	
IAL-D-6993	-	
38882	38882	

1. ALL DIMENSIONS ARE IN mm.
2. ROUND OFF ALL SHARP CORNERS WITH 0.40 mm.
3. TOLERANCES WILL BE AS PER BS:EN-755-9, UNLESS OTHERWISE SPECIFIED

PARTY'S NAME	KOHLI ALUMINIUM	
PARTY'S DRAWING No.	AS PER DRAWING	
ALLOY & TEMPER	6063 T6	PRODUCT CODE:-056
		HSN CODE:- 76042990
DESCRIPTION	ARCHITECTURAL MISC. SECTION	