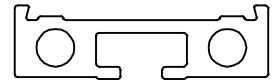


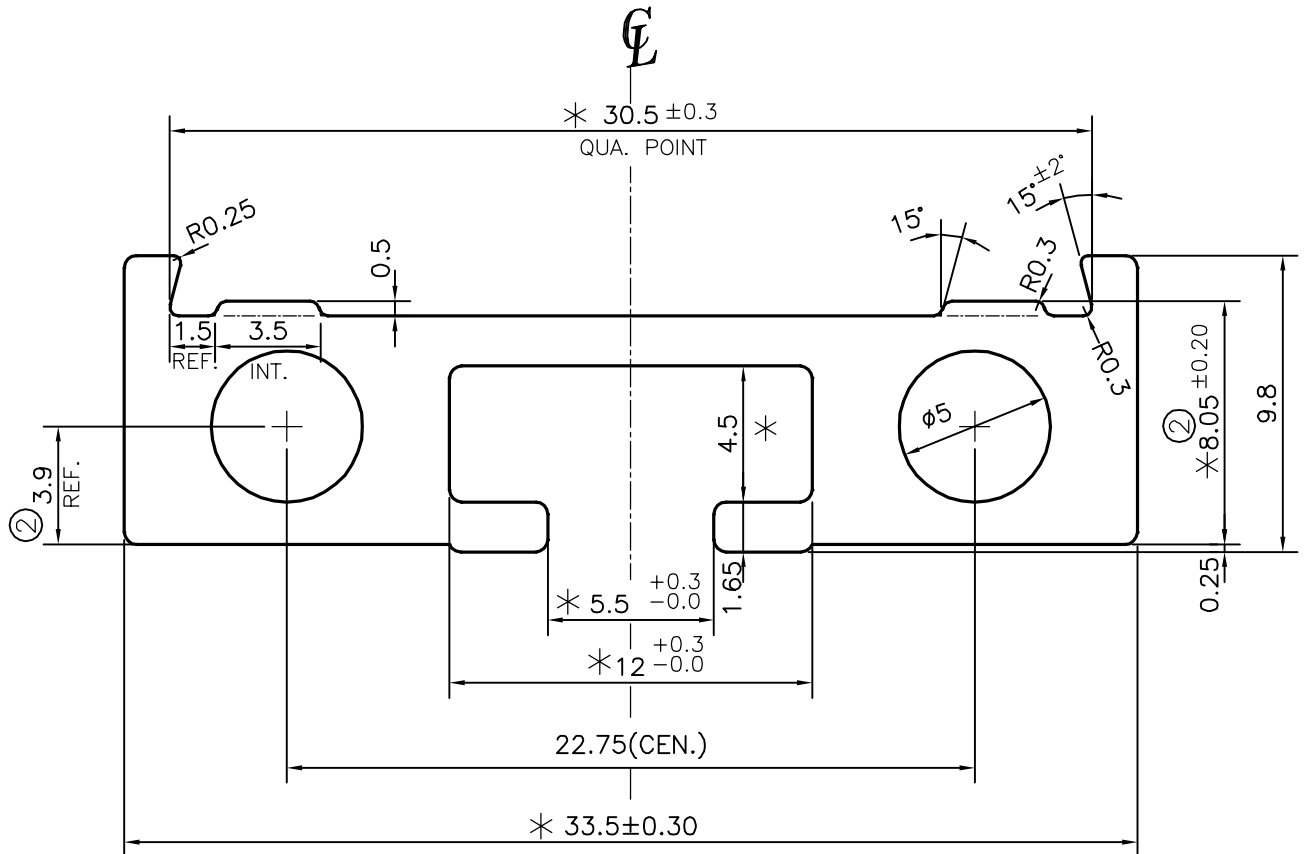
P-17737

S5629

40522



SCALE:- 1:1



ISSUE-2

DIMENSION CHANGED FROM 8.3 mm TO 8.05 mm, &amp; FROM 4.15 TO 3.9 mm.

WEIGHT ALSO CHANGED FROM 0.456 TO 0.441 kg/m

\* = MARKED DIMENSIONS ARE CRITICAL



SYMBOL OF QUALITY  
AN ISO 9001 COMPANY

**JINDAL ALUMINIUM LTD.**  
BANGALORE-560073 (INDIA)

	NAME	DATE
DRAWN	J.P.KAUSHIK	08-02-2018
CHECKED		
APPROVED	B.NATARAJA	13-02-2018
SCALE		4:1
AREA mm <sup>2</sup>		163.487
PERIMETER mm.		114.902
WEIGHT kg/m		0.441
DRAWING No.	SECTION No.	
P-17737	-	
S5629	S5629(ISSUE-2)	
40522	40522	

1. ALL DIMENSIONS ARE IN mm.
2. ROUND OFF ALL SHARP CORNERS WITH 0.40 mm.
3. TOLERANCES WILL BE AS PER IS:6477-1983, UNLESS OTHERWISE SPECIFIED

PARTY'S NAME	SANMIT CARD CLOTHING INDIA PVT. LTD., COIMBATORE
PARTY'S DRAWING No.	SANMIT-TYPE-B-TC-998/R1
ALLOY & TEMPER	63400 WP
DESCRIPTION	TEXTILE SECTION