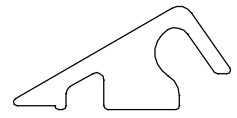


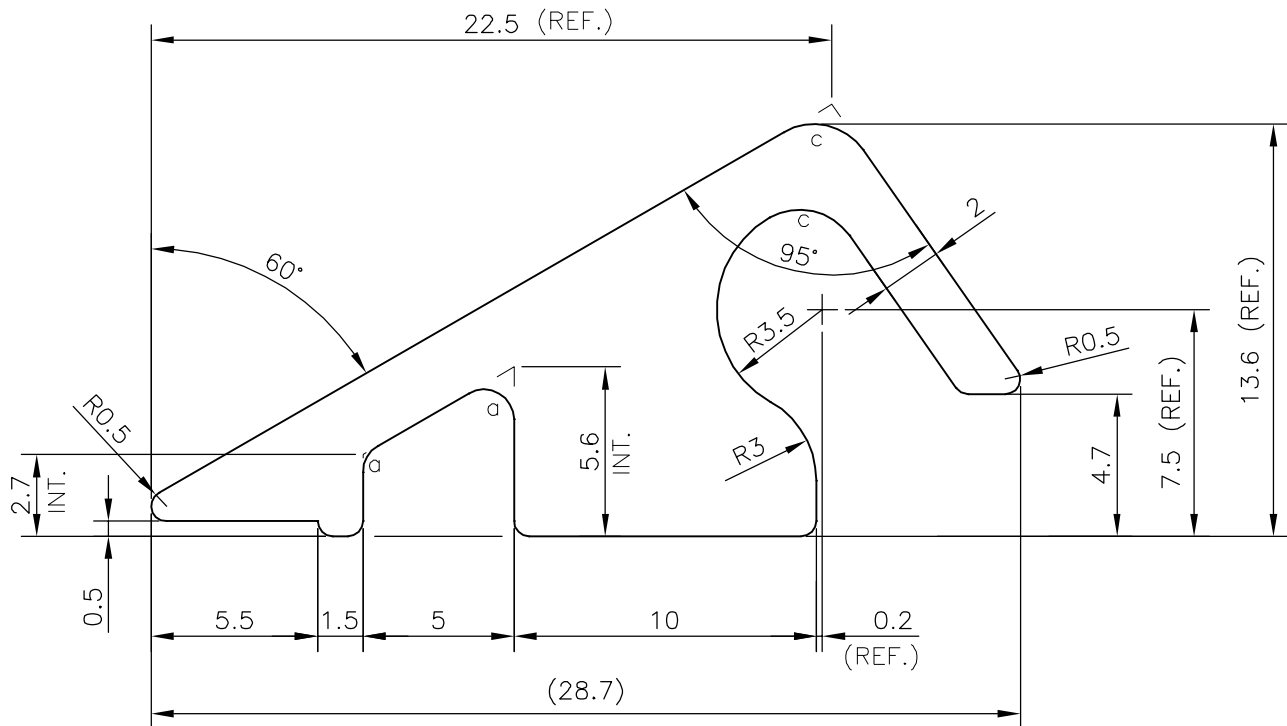
P-16645-1

S5222

40527



SCALE 1:1



a : RADIUS 1.00 mm (2 PLACES)

c : RADIUS 2.00 mm (2 PLACES)

TOLERANCES ON OVERALL WIDTHS & WIDTHS ACROSS FLATS OF BARS, & REGULAR SECTIONS

UPTO 6.40mm - ±0.20	UPTO 32.0mm - ±0.38	UPTO 120.0mm - ±0.85	1. STRAIGHTNESS=1.7mm/M 2. TWIST=1.7mm/M 3. ANGULARITY= ±2° 4. FLATNESS =0.007xWIDTH
UPTO 10.0mm - ±0.23	UPTO 50.0mm - ±0.46	UPTO 160.0mm - ±1.02	
UPTO 12.0mm - ±0.25	UPTO 60.0mm - ±0.53	UPTO 200.0mm - ±1.14	
UPTO 16.0mm - ±0.28	UPTO 80.0mm - ±0.69	UPTO 250.0mm - ±1.40	
UPTO 25.0mm - ±0.30	UPTO 100.0mm - ±0.75	UPTO 300.0mm - ±1.65	

SYMBOL OF QUALITY
AN ISO 9001 COMPANY

JINDAL ALUMINIUM LTD.
BANGALORE-560073 (INDIA)

	NAME	DATE
DRAWN	KIRAN	24-12-2016
CHECKED		
APPROVED	B.NATARAJ	28-12-2016

1. ALL DIMENSIONS ARE IN mm.
2. ROUND OFF ALL SHARP CORNERS WITH 0.50 mm.
3. TOLERANCES WILL BE AS PER IS:3965-1981, UNLESS OTHERWISE SPECIFIED

SCALE	4:1
AREA mm ²	146.646
PERIMETER mm.	90.055
WEIGHT kg/m	0.396

PARTY'S NAME	TEX-TECH INDUSTRIES PVT. LTD., COIMBATORE	DRAWING No.	P-16645-1	SECTION No.	
PARTY'S DRAWING No.	AS PER DRAWING		S5222		S5222
ALLOY & TEMPER	HE9 WP		40527		40527
DESCRIPTION	BAR-TOP COMB PLATE SECTION				