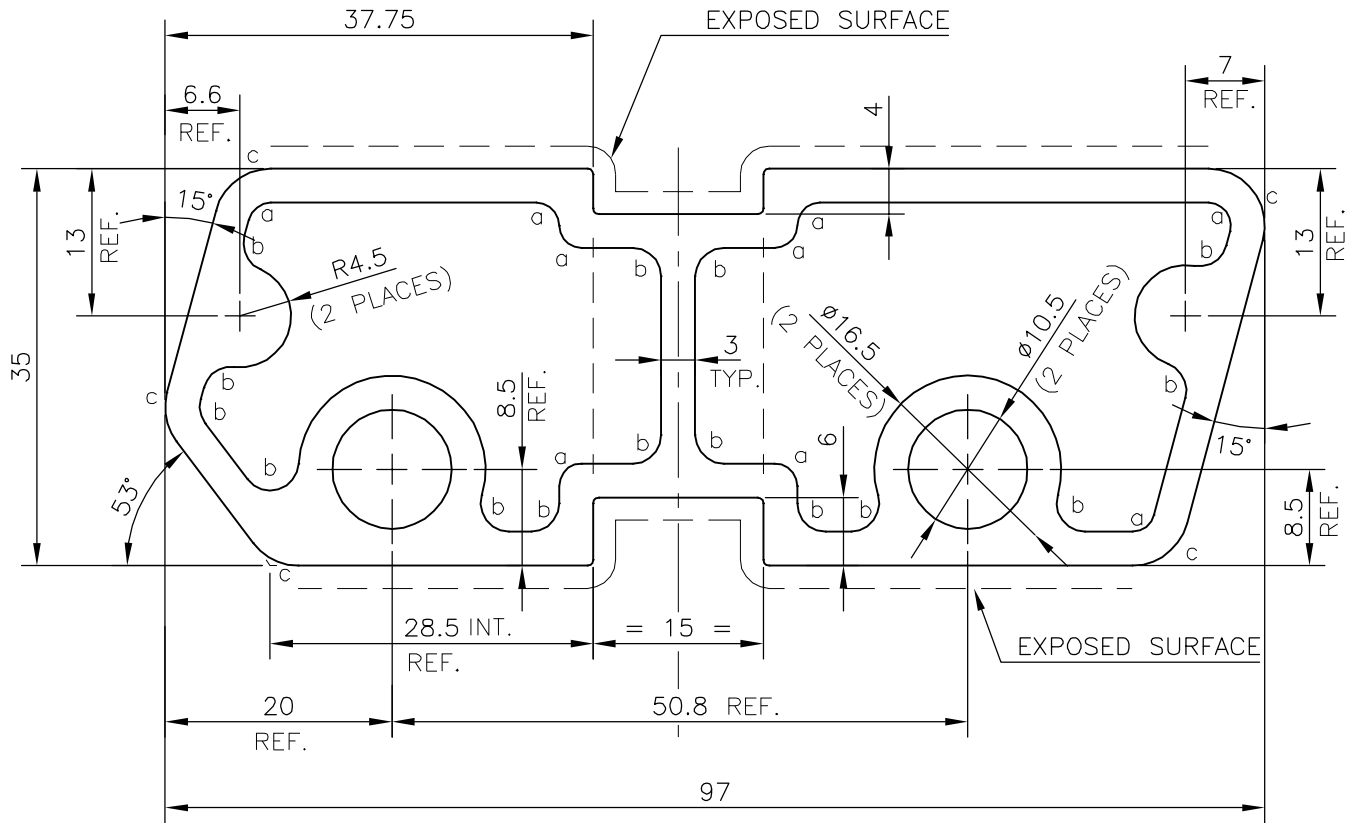
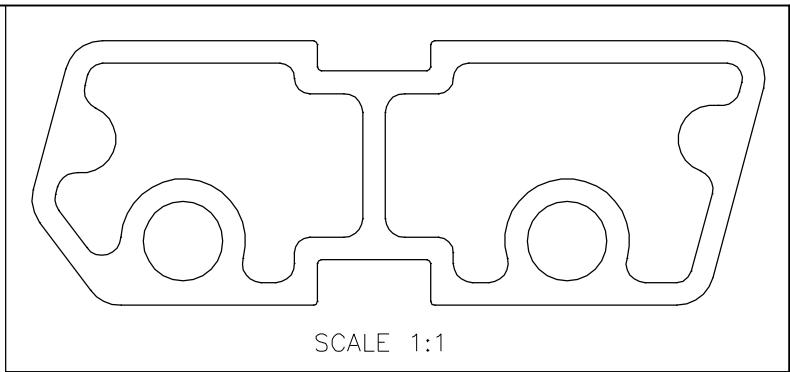


P-16800-1
S5295
40529



- a : RADIUS 2.00 mm (9 PLACES)
- b : RADIUS 2.50 mm (15 PLACES)
- c : RADIUS 5.00 mm (5 PLACES)

TOLERANCES ON OVERALL DIMENSIONS OF HOLLOW SECTIONS

UPTO 20.0mm - ±0.30	UPTO 80.0mm - ±0.70	UPTO 180.0mm - ±1.27	1. STRAIGHTNESS=1.7mm/M 2. TWIST=1.7mm/M 3. ANGULARITY= ±2° 4. FLATNESS =0.006xWIDTH
UPTO 30.0mm - ±0.38	UPTO 100.0mm - ±0.80	UPTO 200.0mm - ±1.40	
UPTO 40.0mm - ±0.45	UPTO 120.0mm - ±0.90	UPTO 225.0mm - ±1.52	
UPTO 50.0mm - ±0.52	UPTO 140.0mm - ±1.00		
UPTO 60.0mm - ±0.60	UPTO 160.0mm - ±1.14		

<p>SYMBOL OF QUALITY AN ISO 9001 COMPANY</p>	<p>JINDAL ALUMINIUM LTD. BANGALORE-560073 (INDIA)</p>	NAME	DATE
		DRAWN	KIRAN
		CHECKED	
		APPROVED	B.NATARAJ 10-02-2017
<p>1. ALL DIMENSIONS ARE IN mm. 2. ROUND OFF ALL SHARP CORNERS WITH 0.50 mm. 3. TOLERANCES WILL BE AS PER IS:6477-1983, UNLESS OTHERWISE SPECIFIED</p>		SCALE	1.5:1
		AREA mm ²	1149.04
		PERIMETER mm.	259.661
		WEIGHT kg/m	3.102
		DRAWING No.	SECTION No.
PARTY'S NAME	FALCON AUTOTECH PVT.LTD., GREATER NOIDA	P-16800-1	
PARTY'S DRAWING No.	AS PER DRAWING & REQUIREMENT	S5295	S5295
ALLOY & TEMPER	6063 T6	40529	40529
DESCRIPTION	TEXTILE SECTION		