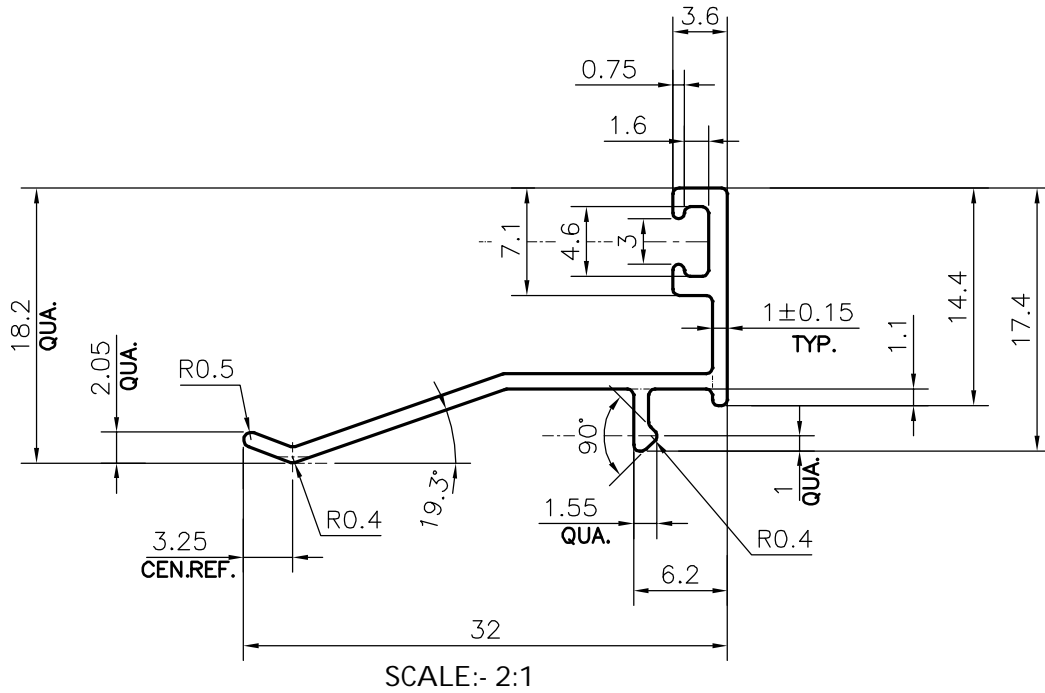
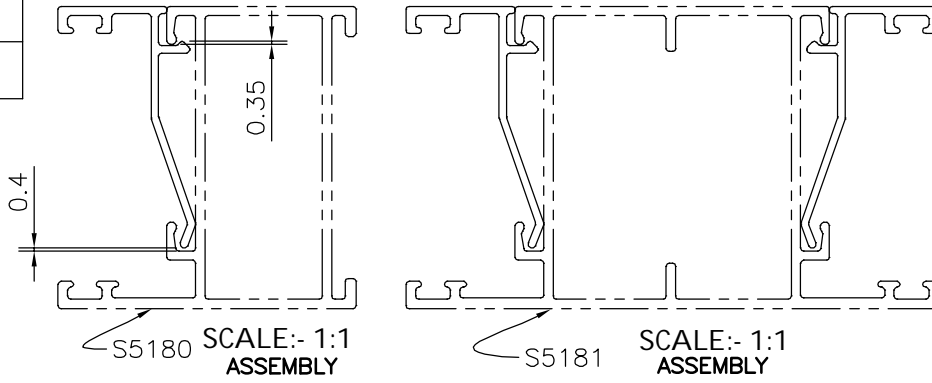


P-21877

41541

SCALE:- 1:1



**APPROXIMATE WEIGHT RANGE - 0.137 - 0.185 kg/m**

TOLERANCES ON OVERALL WIDTHS & WIDTHS ACROSS FLATS OF BARS, & REGULAR SECTIONS

UPTO 6.40mm - ±0.20	UPTO 32.0mm - ±0.38	UPTO 120.0mm - ±0.85	1. STRAIGHTNESS=1.7mm/M 2. TWIST=1.7mm/M 3. ANGULARITY= ±2° 4. FLATNESS =0.007xWIDTH
UPTO 10.0mm - ±0.23	UPTO 50.0mm - ±0.46	UPTO 160.0mm - ±1.02	
UPTO 12.0mm - ±0.25	UPTO 60.0mm - ±0.53	UPTO 200.0mm - ±1.14	
UPTO 16.0mm - ±0.28	UPTO 80.0mm - ±0.69	UPTO 250.0mm - ±1.40	
UPTO 25.0mm - ±0.30	UPTO 100.0mm - ±0.75	UPTO 300.0mm - ±1.65	



SYMBOL OF QUALITY  
AN ISO 9001 COMPANY

**JINDAL ALUMINIUM LTD.**  
BANGALORE-560073 (INDIA)

	NAME	DATE
DRAWN	DARPAN	17-12-2020
CHECKED		
APPROVED	B.NATARAJA	21-12-2020

1. ALL DIMENSIONS ARE IN mm.
2. ROUND OFF ALL SHARP CORNERS WITH 0.40 mm.
3. TOLERANCES WILL BE AS PER **IS:3965-1981** , UNLESS OTHERWISE SPECIFIED

SCALE	<b>2:1</b>
AREA mm <sup>2</sup>	<b>59.686</b>
PERIMETER mm.	<b>112.692</b>
WEIGHT kg/m	<b>0.161</b>

PARTY'S NAME	<b>RADIANCE ENTERPRISE, HOWRAH</b>
PARTY'S DRAWING No.	<b>AS PER AutoCAD DRAWING</b>
ALLOY & TEMPER	<b>6063 T6</b>
DESCRIPTION	<b>GLAZING CLIP SECTION</b>

DRAWING No.	SECTION No.
<b>P-21877</b>	<b>-</b>
<b>41541</b>	<b>41541</b>