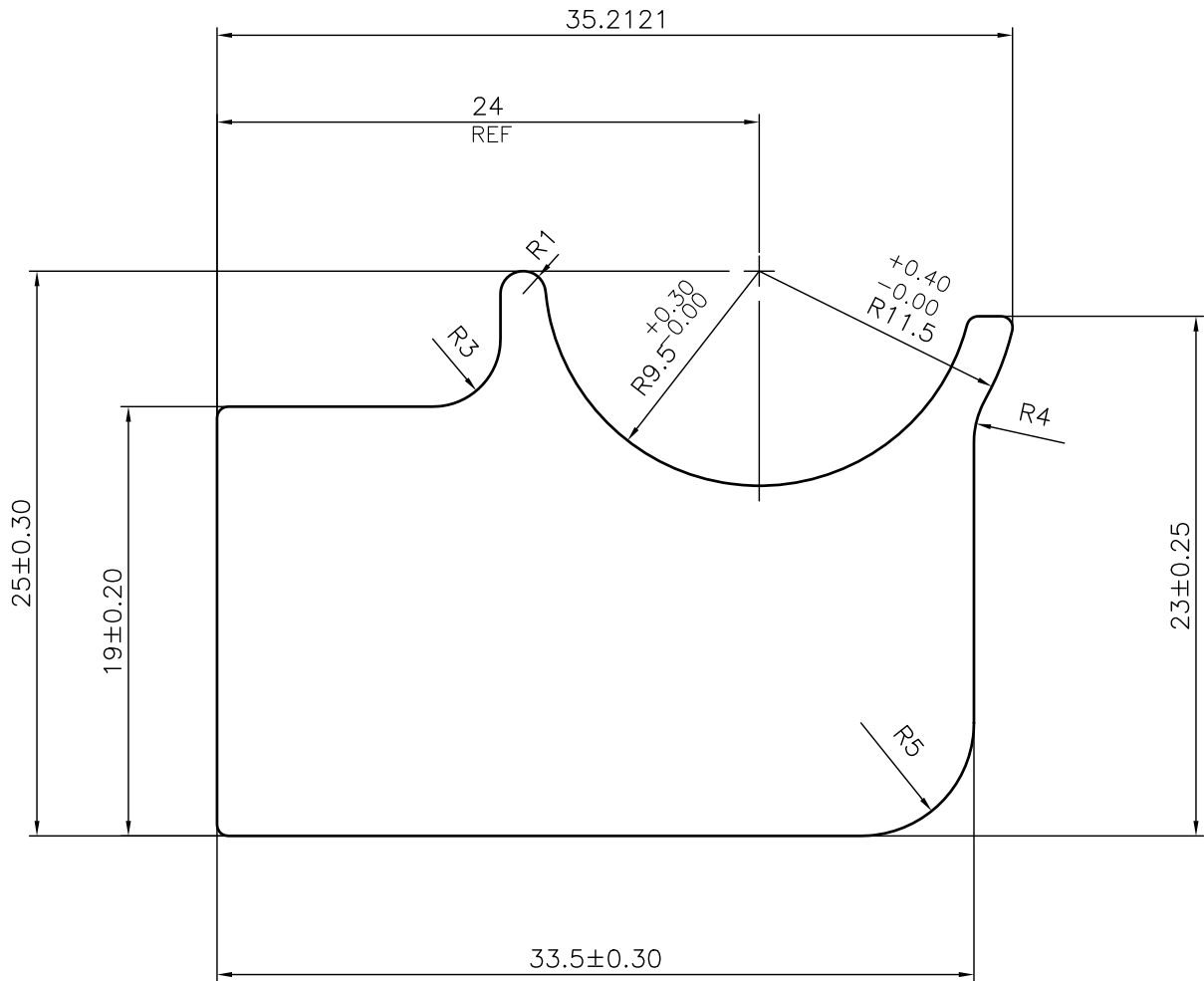
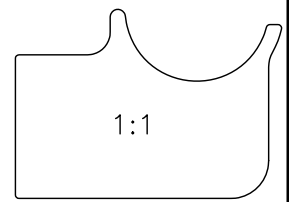


P-22336

43510



APPROXIMATE WEIGHT RANGE-1.509 - 1.845 kg/m

UNSPECIFIED RADIUS 0.50 mm



SYMBOL OF QUALITY  
AN ISO 9001 COMPANY

**JINDAL ALUMINIUM LTD.**  
BANGALORE-560073 (INDIA)

|          | NAME        | DATE       |
|----------|-------------|------------|
| DRAWN    | J.P.KAUSHIK | 22-03-2021 |
| CHECKED  |             |            |
| APPROVED | B.NATARAJA  | 25-03-2021 |

1. ALL DIMENSIONS ARE IN mm.
2. ROUND OFF ALL SHARP CORNERS WITH 0.40 mm.
3. TOLERANCES WILL BE AS PER IS:3965-1981 UNLESS OTHERWISE SPECIFIED

|                      |         |
|----------------------|---------|
| SCALE                | 3:1     |
| AREA mm <sup>2</sup> | 621.28  |
| PERIMETER mm.        | 121.067 |
| WEIGHT kg/m          | 1.677   |

|                     |                                |
|---------------------|--------------------------------|
| PARTY'S NAME        | SWASTIKA AUTOMATICS, FARIDABAD |
| PARTY'S DRAWING No. | 19E 777-BA                     |
| ALLOY & TEMPER      | 6005 T5                        |
| DESCRIPTION         | AUTOMOBILE SECTION             |

| DRAWING No. | SECTION No. |
|-------------|-------------|
| P-22336     |             |
| 43510       | 43510       |
|             |             |
|             |             |