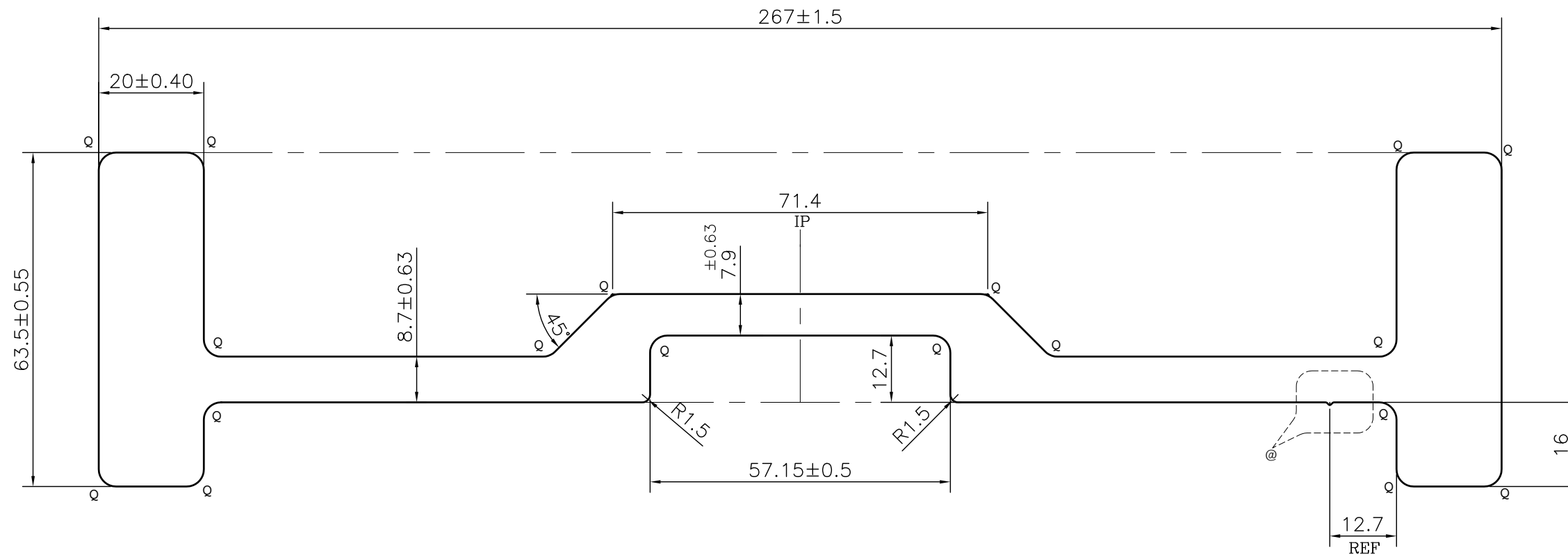
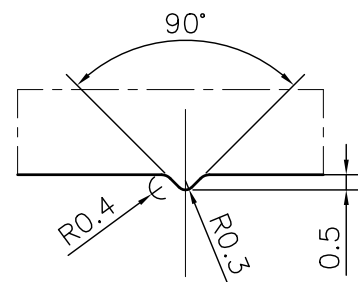


P-22488

43516



APPROXIMATE WEIGHT RANGE - 11.604 - 14.182 kg/m




DETAIL OF "A"
SCALE 4:1

R = 3.3 RADIUS (18 PLACES)

TOLERANCES ON OVERALL WIDTHS & WIDTHS ACROSS FLATS OF BARS, & REGULAR SECTIONS

UPTO 6.40mm - ±0.20	UPTO 32.0mm - ±0.38	UPTO 120.0mm - ±0.85	1. STRAIGHTNESS=1.7mm/M 2. TWIST=1.7mm/M 3. ANGULARITY= ±2° 4. FLATNESS =0.007xWIDTH
UPTO 10.0mm - ±0.23	UPTO 50.0mm - ±0.46	UPTO 160.0mm - ±1.02	
UPTO 12.0mm - ±0.25	UPTO 60.0mm - ±0.53	UPTO 200.0mm - ±1.14	
UPTO 16.0mm - ±0.28	UPTO 80.0mm - ±0.69	UPTO 250.0mm - ±1.40	
UPTO 25.0mm - ±0.30	UPTO 100.0mm - ±0.75	UPTO 300.0mm - ±1.65	

 SYMBOL OF QUALITY AN ISO 9001 COMPANY	JINDAL ALUMINIUM LTD. BANGALORE-560073 (INDIA)	NAME	DATE
		DRAWN	SONU 20-04-2021
1. ALL DIMENSIONS ARE IN mm. 2. ROUND OFF ALL SHARP CORNERS WITH 0.40 mm. 3. TOLERANCES WILL BE AS PER IS:3965-1981 UNLESS OTHERWISE SPECIFIED		CHECKED	
		APPROVED	B.NATARAJA 23-04-2021
PARTY'S NAME SHAW ALMEX INDIA PVT. LTD., FARIDABAD		SCALE	1:1
		AREA mm ²	4775.103
PARTY'S DRAWING No. AS PER DRAWING		PERIMETER mm.	784.527
		WEIGHT kg/m	12.893
ALLOY & TEMPER 6082 T6		DRAWING No.	SECTION No.
		P-22488	-
DESCRIPTION INDUSTRIAL SECTION		43516	43516