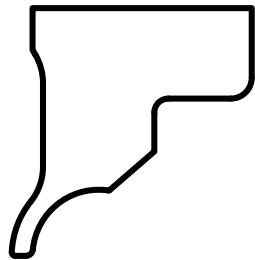
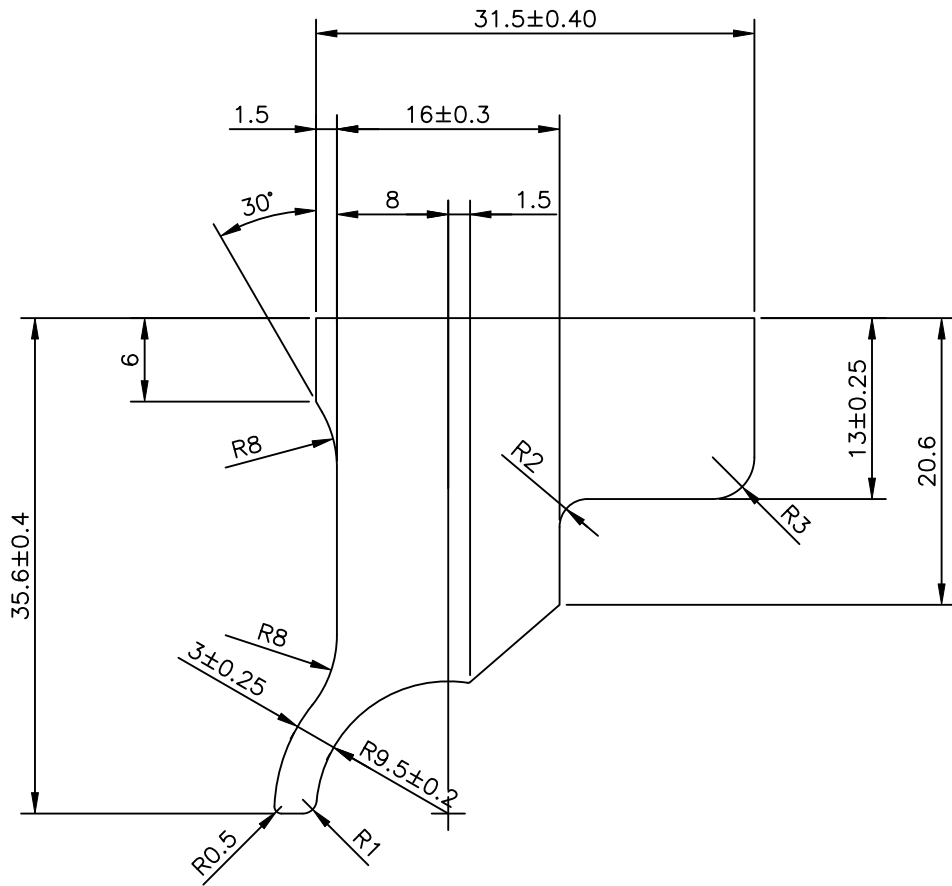



|            |
|------------|
| IAL-A-1029 |
| 43675      |
|            |



SCALE: 1:1



|   |  |                      |            |             |
|---|--|----------------------|------------|-------------|
| <br>SYMBOL OF QUALITY<br>AN ISO 9001 COMPANY                       | <b>JINDAL ALUMINIUM LTD.</b><br>BANGALORE-560073 (INDIA) |                      | NAME       | DATE        |
|   |  | DRAWN                | S.K.SHARMA | 17-03-2022  |
|   |  | CHECKED              |            |             |
|   |  | APPROVED             |            |             |
| 1. ALL DIMENSIONS ARE IN mm.<br>2. ROUND OFF ALL SHARP CORNERS WITH 0.40 mm.<br>3. TOLERANCES WILL BE AS PER BS:EN-755-9 , UNLESS OTHERWISE SPECIFIED |  | SCALE                |            | 1:1&2:1     |
|   |  | AREA mm <sup>2</sup> |            | 628.47      |
|   |  | PERIMETER mm.        |            | 128.3       |
|   |  | WEIGHT kg/m          |            | 1.697       |
| PARTY'S NAME  | M/S. PRANAV VIKAS  | DRAWING No.          |            | SECTION No. |
| PARTY'S DRAWING No.   | AS PER DRAWING   | IAL-A-1029           |            | -           |
| ALLOY & TEMPER  | 6063-T6  | 43675                |            | 43675       |
| DESCRIPTION   | --   |                      |            |             |