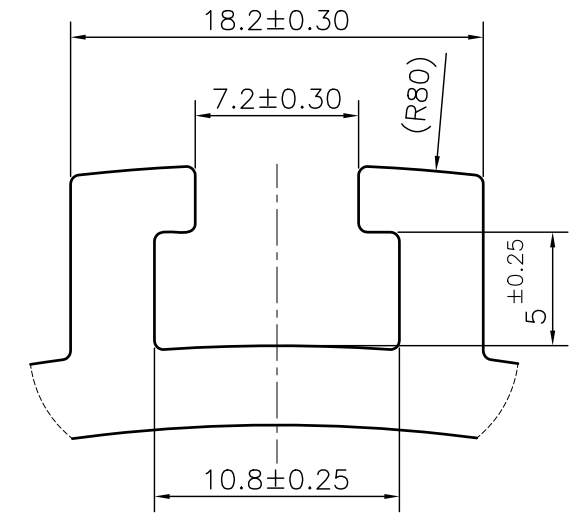
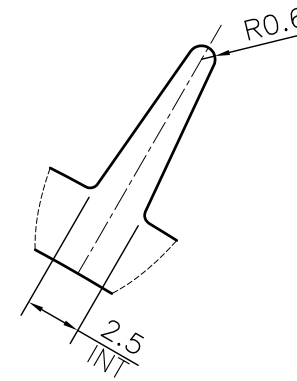


DETAIL A
SCALE 3:1




DETAIL B
SCALE 3:1



DETAIL C
SCALE 3:1

NOTE:-
r= 0.5 RADIUS (24 PLACES)

1. STRAIGHTNESS= 1.7mm/M
2. TWIST= 1.7mm/M
3. ANGULARITY= $\pm 2^\circ$
4. FLATNESS= 0.007xWIDTH

 SYMBOL OF QUALITY AN ISO 9001 COMPANY	JINDAL ALUMINIUM LTD. BHIWADI-301019 (INDIA)	NAME	DATE
		DRAWN	ASHUTOSH 28-12-2023
1. ALL DIMENSIONS ARE IN mm. 2. ROUND OFF ALL SHARP CORNERS WITH 0.40 mm. 3. TOLERANCES WILL BE AS PER BS:EN-755-9 , UNLESS OTHERWISE SPECIFIED		CHECKED	
		APPROVED	
PARTY'S NAME KOHLI ALUMINIUM		SCALE	1:1
		AREA mm ²	2642.391
PARTY'S DRAWING No. AS PER DRAWING		PERIMETER mm.	1223.338
		WEIGHT kg/m	7.134
ALLOY & TEMPER 6063 T6		DRAWING No.	SECTION No.
		IAL-D-6799	-
DESCRIPTION MOTOR BODY SECTION		52006	52006
		PRODUCT CODE:-084	
		HSN CODE:- 76042100	