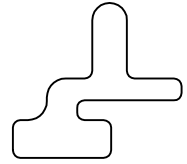
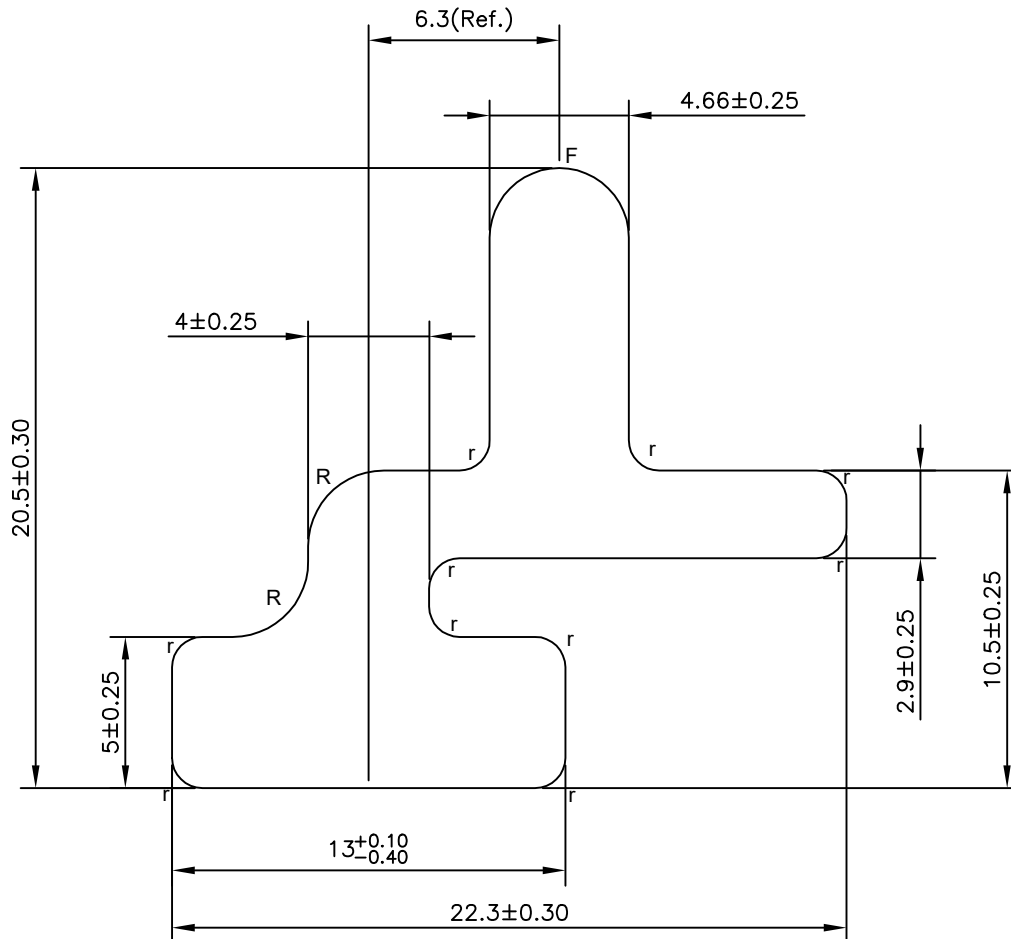


IAL-A-1034

A1034



SCALE 1:1



NOTE: -

$r=1.00R$
 $R=2.50R$
 $F=Full$
 Radius

TWIST= $\pm 1/4^\circ/300M.M./M.$
 FLATNESS= $WIDTH \times 0.005mm.$
 STRAIGHTNESS= $1.5 M.M./MTR.$
 ANGULARITY= $\pm 1.5^\circ$



SYMBOL OF QUALITY
 AN ISO 9001 COMPANY

JINDAL ALUMINIUM LTD.
 BANGALORE-560073 (INDIA)

	NAME	DATE
DRAWN	ASHUTOSH	05-05-2022
CHECKED		
APPROVED		

- ALL DIMENSIONS ARE IN mm.
- ROUND OFF ALL SHARP CORNERS WITH 0.40 mm.
- TOLERANCES WILL BE AS PER BS:EN-755-9, UNLESS OTHERWISE SPECIFIED

SCALE	1:1 & 4:1
AREA mm ²	170.32
PERIMETER mm.	86.32
WEIGHT kg/m	0.460

PARTY'S NAME	M/S. PRANAV VIKAS	DRAWING No.	SECTION No.
PARTY'S DRAWING No.	AS PER DRAWING	IAL-A-1034	
ALLOY & TEMPER	6063-T6	A1034	A1034
DESCRIPTION	CURTAIN WALL SECTION		