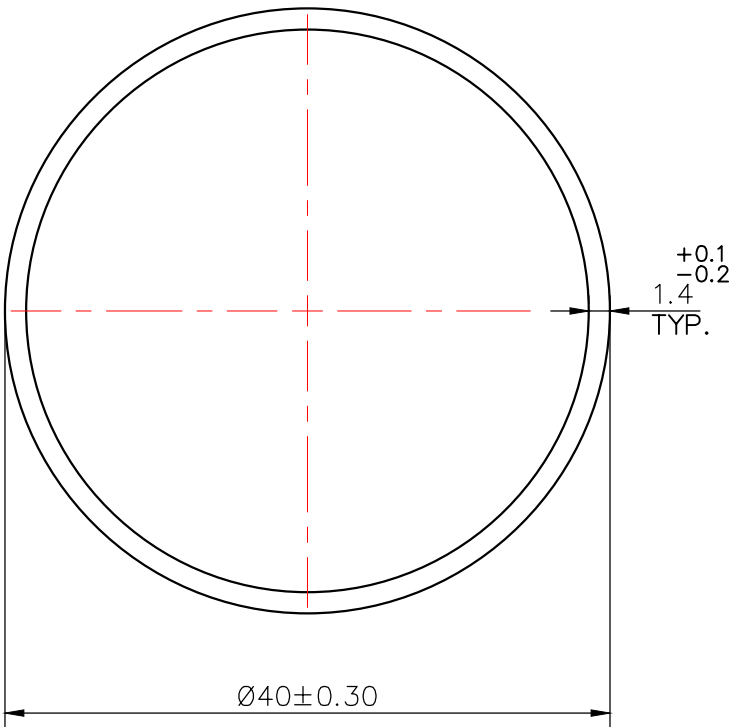
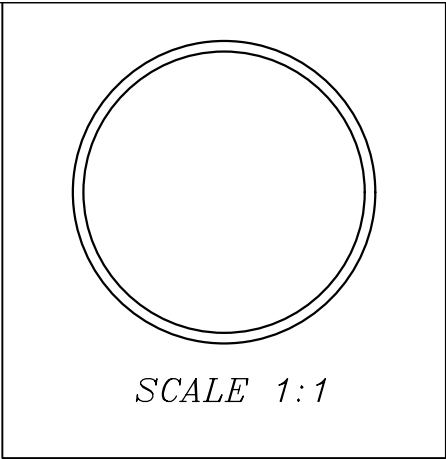



MAL-12082
B416



1. STRAIGHTNESS= 1.7mm/M
2. TWIST= 1.7mm/M
3. ANGULARITY=  $\pm 2^\circ$
4. FLATNESS= 0.007xWIDTH

 SYMBOL OF QUALITY AN ISO 9001 COMPANY	<b>JINDAL ALUMINIUM LTD.</b> <i>BHIWADI-301019 (INDIA)</i>		NAME	DATE
			DRAWN	ASHUTOSH
1. ALL DIMENSIONS ARE IN mm. 2. ROUND OFF ALL SHARP CORNERS WITH 0.40 mm. 3. TOLERANCES WILL BE AS PER BS:EN-755-9 , UNLESS OTHERWISE SPECIFIED			CHECKED	
			APPROVED	
PARTY'S NAME PRECISION PRODUCTS			SCALE	2:1
			AREA mm <sup>2</sup>	169.80
PARTY'S DRAWING No. AS PER DRAWING			PERIMETER mm.	125.70
			WEIGHT kg/m	0.458
ALLOY & TEMPER 1050			DRAWING No.	SECTION No.
			MAL-12082	
DESCRIPTION ROUND TUBE SECTION			B416	B416
PRODUCT CODE: -006 HSN CODE: -76082000				