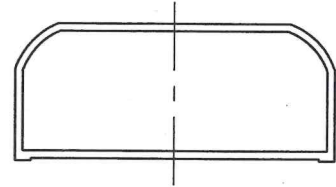
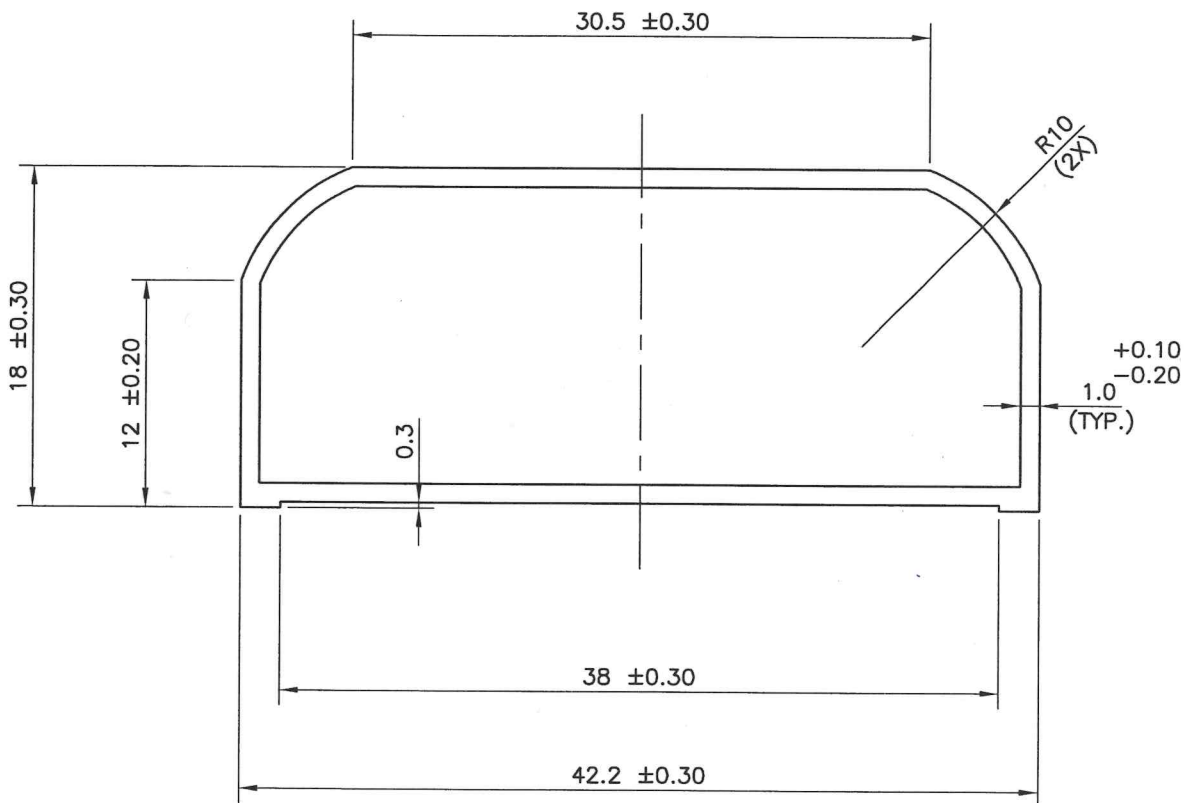


MAL NO.-11742

B-902



SCALE 1:1



TWIST=  $\pm 1/4^\circ/300\text{M.M./M.}$   
 FLATNESS=WIDTHX0.005mm.  
 STRAIGHTNESS= 1.5 M.M./MTR.  
 ANGULARITY=  $\pm 1.5^\circ$



SYMBOL OF QUALITY  
AN ISO 9001 COMPANY

**JINDAL ALUMINIUM LTD.**  
BANGALORE-560073 (INDIA)

	NAME	DATE
DRAWN	ASHUTOSH	03-06-2022
CHECKED	<i>Ranjit</i>	46-2022
APPROVED	<i>Mkai</i>	04.06.22

1. ALL DIMENSIONS ARE IN mm.
2. ROUND OFF ALL SHARP CORNERS WITH 0.40 mm.
3. TOLERANCES WILL BE AS PER BS:EN-755-9 , UNLESS OTHERWISE SPECIFIED

SCALE	1:1&2.5:1
AREA mm <sup>2</sup>	111.50
PERIMETER mm.	114.59
WEIGHT kg/m	0.301

PARTY'S NAME	M/S. COMPLETE SURVEYING	DRAWING No.	SECTION No.
PARTY'S DRAWING No.	AS PER DRAWING (B-797)	MAL NO. 11742	B-902
ALLOY & TEMPER	6063-T6	-	-
DESCRIPTION	--		