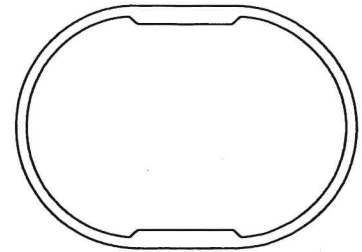
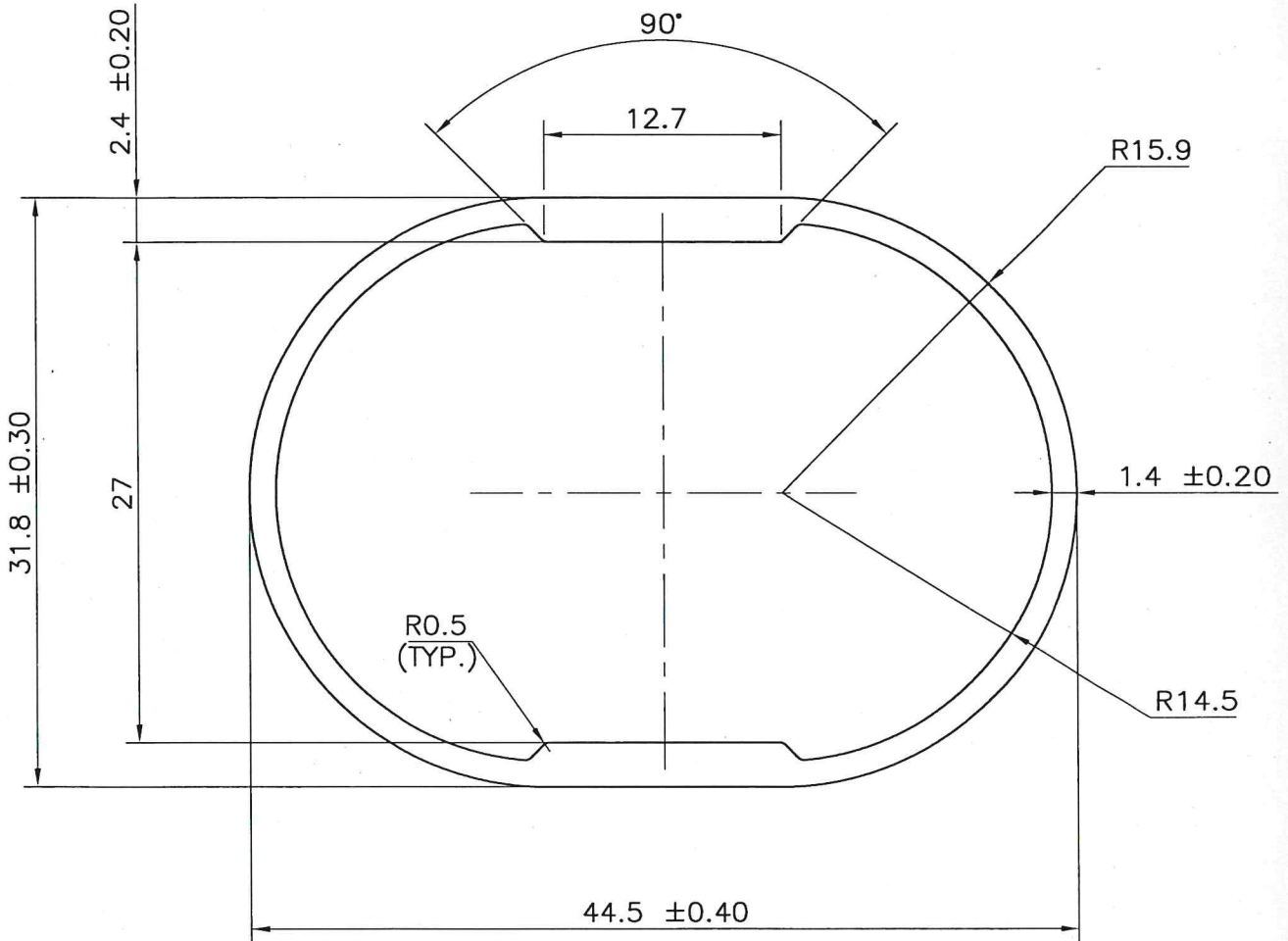


MAL NO 14106

B-967



SCALE 1:1



TWIST = $\pm 1/4^\circ / 300 \text{ M.M. / M.}$
 FLATNESS = $\text{WIDTH} \times 0.005 \text{ mm.}$
 STRAIGHTNESS = 1.5 M.M. / MTR.
 ANGULARITY = $\pm 1.5^\circ$



SYMBOL OF QUALITY
AN ISO 9001 COMPANY

JINDAL ALUMINIUM LTD.
BANGALORE-560073 (INDIA)

	NAME	DATE
DRAWN	ASHUTOSH	28-06-2022
CHECKED	<i>[Signature]</i>	28-6-2022
APPROVED	<i>[Signature]</i>	28/06/22
SCALE		1:1 & 2.5:1
AREA	mm ²	196.63
PERIMETER	mm.	125.30
WEIGHT	kg/m	0.531
DRAWING No.		SECTION No.
MAL NO 14106		B-967
-		

- ALL DIMENSIONS ARE IN mm.
- ROUND OFF ALL SHARP CORNERS WITH 0.40 mm.
- TOLERANCES WILL BE AS PER BS:EN-755-9, UNLESS OTHERWISE SPECIFIED

PARTY'S NAME	M/S. COMPLETE SURVEYING TECH. PVT. LTD.
PARTY'S DRAWING No.	AS PER DRAWING (N439892)
ALLOY & TEMPER	6063-T6
DESCRIPTION	--