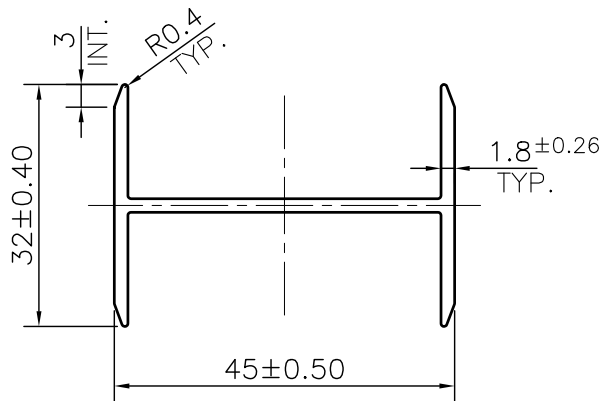


MAL NO.-8931

C934



- 1. STRAIGHTNESS= 1.7mm/M
- 2. TWIST= 1.7mm/M
- 3. ANGULARITY= ±2°
- 4. FLATNESS= 0.007xWIDTH



SYMBOL OF QUALITY  
AN ISO 9001 COMPANY

**JINDAL ALUMINIUM LTD.**  
*BHIWADI-301019 (INDIA)*

	NAME	DATE
DRAWN	ASHUTOSH	20-03-2024
CHECKED		
APPROVED		
SCALE		1:1
AREA mm <sup>2</sup>		182.927
PERIMETER mm.		209.06
WEIGHT kg/m		0.494
DRAWING No.		SECTION No.
MAL NO.-8931		-
C934		C934

- 1. ALL DIMENSIONS ARE IN mm.
- 2. ROUND OFF ALL SHARP CORNERS WITH 0.40 mm.
- 3. TOLERANCES WILL BE AS PER BS:EN-755-9 , UNLESS OTHERWISE SPECIFIED

PARTY'S NAME	R.L.	
PARTY'S DRAWING No.	AS PER DRAWING	
ALLOY & TEMPER	6063 T6	PRODUCT CODE:-022
		HSN CODE:- 76042990
DESCRIPTION	H SECTION	