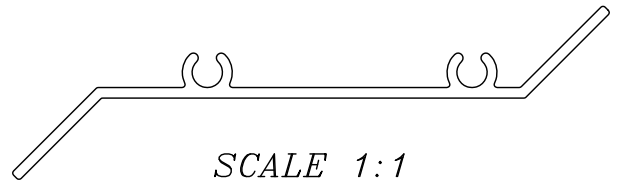
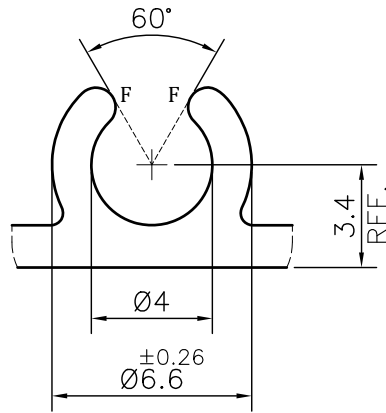
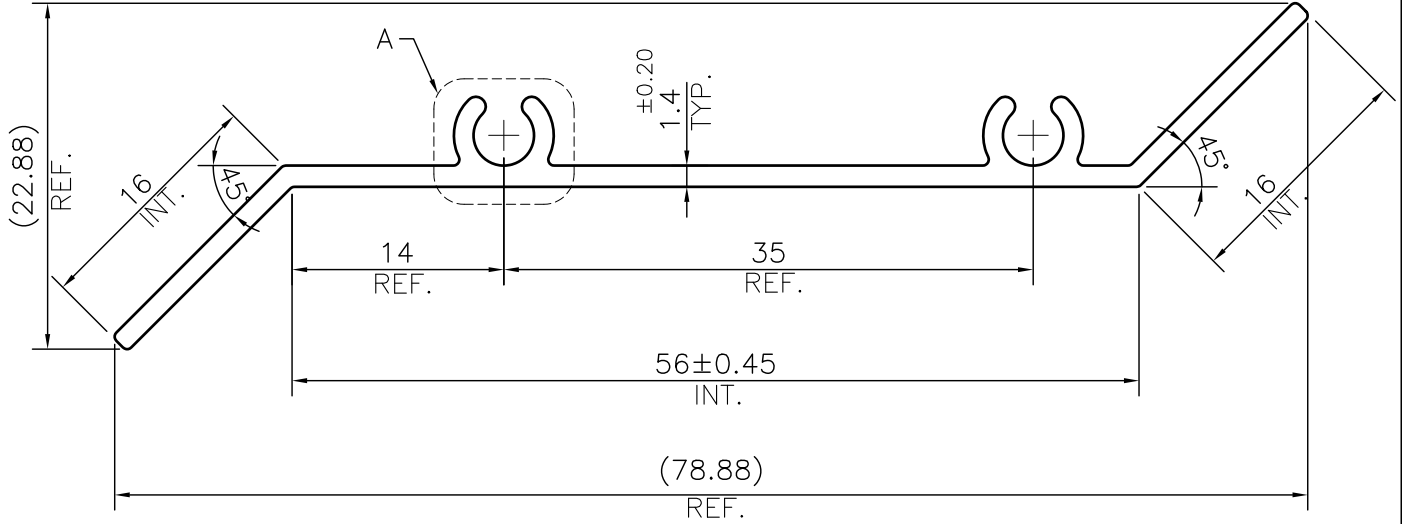


IAL-D-1031

D1031



SCALE 1:1



DETAIL A  
SCALE 4:1

**NOTE:-****F= FULL RADIUS (4 PLACES)**

1. STRAIGHTNESS= 1.7mm/M
2. TWIST= 1.7mm/M
3. ANGULARITY=  $\pm 2^\circ$
4. FLATNESS= 0.007xWIDTH



SYMBOL OF QUALITY  
AN ISO 9001 COMPANY

**JINDAL ALUMINIUM LTD.**  
BHIWADI-301019 (INDIA)

	NAME	DATE
DRAWN	ASHUTOSH	03-10-2023

CHECKED

APPROVED

SCALE

2:1

AREA mm<sup>2</sup>

148.462

PERIMETER mm.

210.35

WEIGHT kg/m

0.401

DRAWING No.

SECTION No.

IAL-D-1031

-

D1031

D1031

1. ALL DIMENSIONS ARE IN mm.
2. ROUND OFF ALL SHARP CORNERS WITH 0.40 mm.
3. TOLERANCES WILL BE AS PER BS:EN-755-9, UNLESS OTHERWISE SPECIFIED

PARTY'S NAME

-

PARTY'S DRAWING No.

AS PER DRAWING

ALLOY &amp; TEMPER

6063 T5

PRODUCT CODE:-048

HSN CODE:- 76042990

DESCRIPTION

LOUVER SECTION