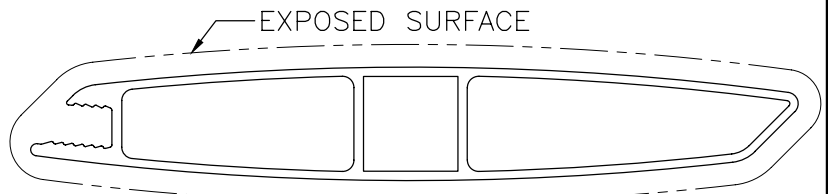
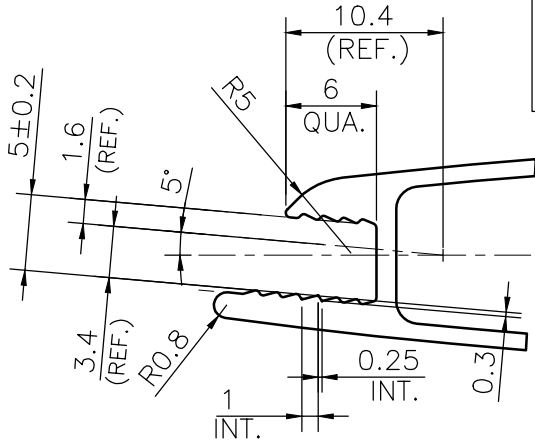


MAL NO.-5521

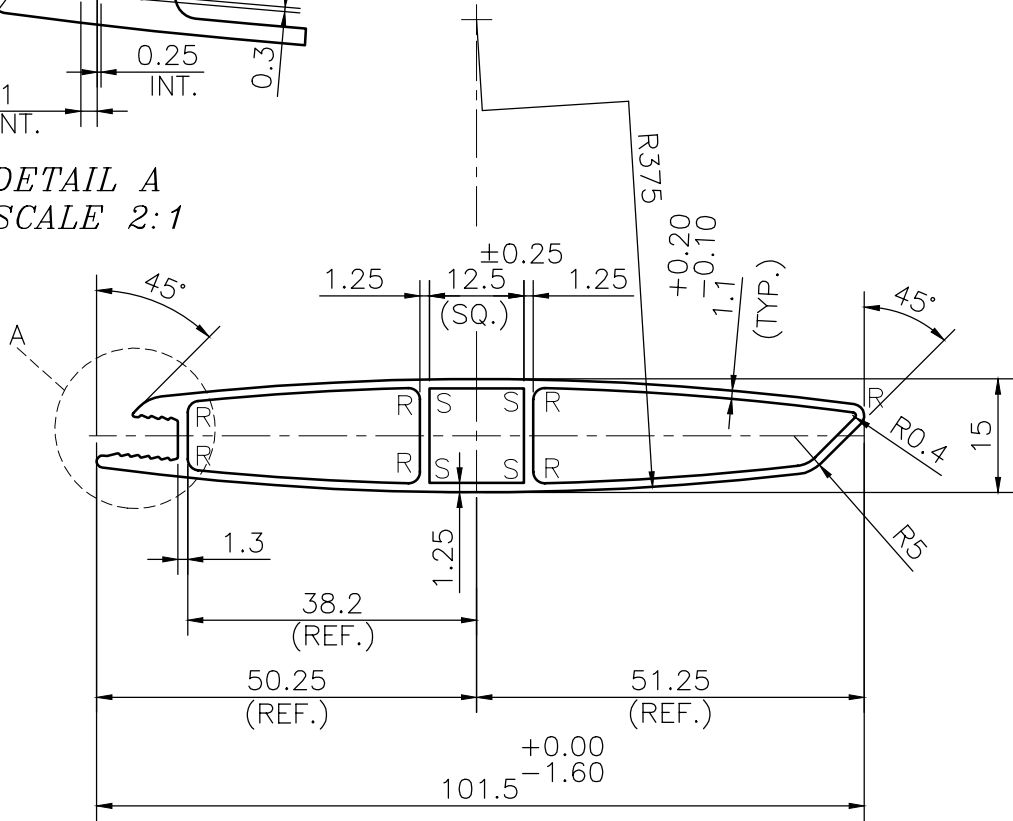
D2882



SCALE 1:1



DETAIL A
SCALE 2:1



NOTE:-

R= 1.50 RADIUS (7 PLACES)

S= SHARP SQUARE CORNERS (4 PLACES)

ROUND OFF ALL SHARP CORNERS WITH 0.30 mm.

1. STRAIGHTNESS= 1.7mm/M
2. TWIST= 1.7mm/M
3. ANGULARITY= ±2°
4. FLATNESS= 0.007xWIDTH



SYMBOL OF QUALITY
AN ISO 9001 COMPANY

JINDAL ALUMINIUM LTD.
BHIWADI-301019 (INDIA)

		NAME	DATE
DRAWN		S.K.SHARMA	26-03-2024
CHECKED			
APPROVED			
SCALE		1:1	
AREA mm ²		287.454	
PERIMETER mm.		228.283	
WEIGHT kg/m		0.776	
DRAWING No.		SECTION No.	
MAL NO.-5521		-	
D2882		D2882	

1. ALL DIMENSIONS ARE IN mm.
2. ROUND OFF ALL SHARP CORNERS WITH 0.30 mm.
3. TOLERANCES WILL BE AS PER BS:EN-755-9 , UNLESS OTHERWISE SPECIFIED

PARTY'S NAME	RAVISTAR INDIA PVT.LTD.	
PARTY'S DRAWING No.	AS PER DRAWING (420 E 4634)	
ALLOY & TEMPER	6063 T6	PRODUCT CODE:-082
		HSN CODE:- 76042100
DESCRIPTION	AIR GRILL SECTION	