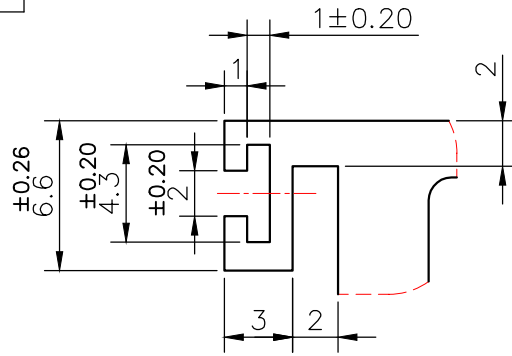
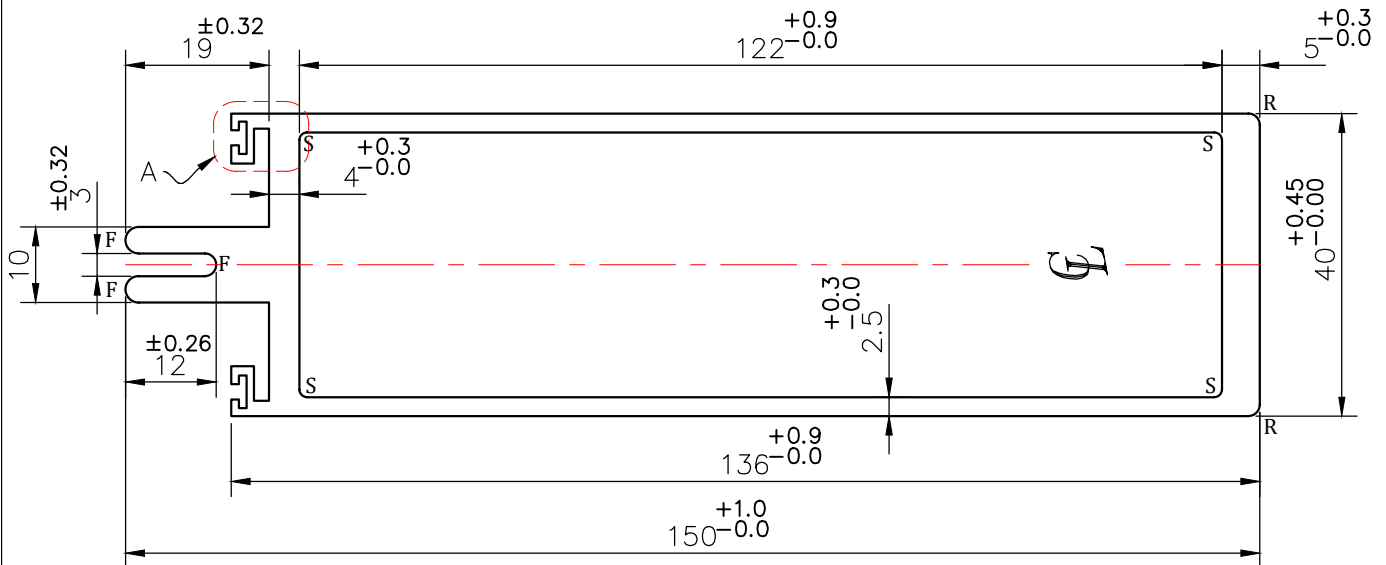


MAL-8466

D3520



DETAIL A  
SCALE 3:1

**NOTE:-****S= 1 RADIUS (4 PLACES)****R= 1.5 RADIUS (2 PLACES)****F= FULL RADIUS (3 PLACES)**

1. STRAIGHTNESS= 1.7mm/M
2. TWIST= 1.7mm/M
3. ANGULARITY=  $\pm 2^\circ$
4. FLATNESS= 0.007xWIDTH



SYMBOL OF QUALITY  
AN ISO 9001 COMPANY

**JINDAL ALUMINIUM LTD.**  
BHIWADI-301019 (INDIA)

	NAME	DATE
DRAWN	ASHUTOSH	25-07-2023

CHECKED

APPROVED

SCALE

1:1

AREA mm<sup>2</sup>

1160.0

PERIMETER mm.

470.6

WEIGHT kg/m

3.132

DRAWING No.

SECTION No.

MAL-8466

D3520

D3520

1. ALL DIMENSIONS ARE IN mm.
2. ROUND OFF ALL SHARP CORNERS WITH 0.40 mm.
3. TOLERANCES WILL BE AS PER BS:EN-755-9 , UNLESS OTHERWISE SPECIFIED

PARTY'S NAME ALUBUILD

PARTY'S DRAWING No. AS PER DRAWING

ALLOY &amp; TEMPER 6063 T6

PRODUCT CODE:-055  
HSN CODE:-76042100

DESCRIPTION CURTAIN WALL SECTION