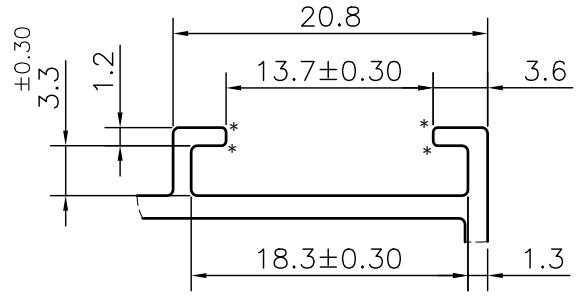
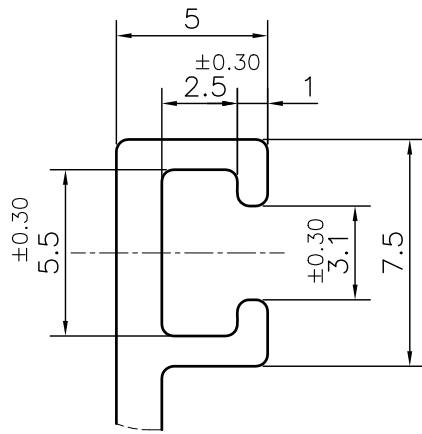
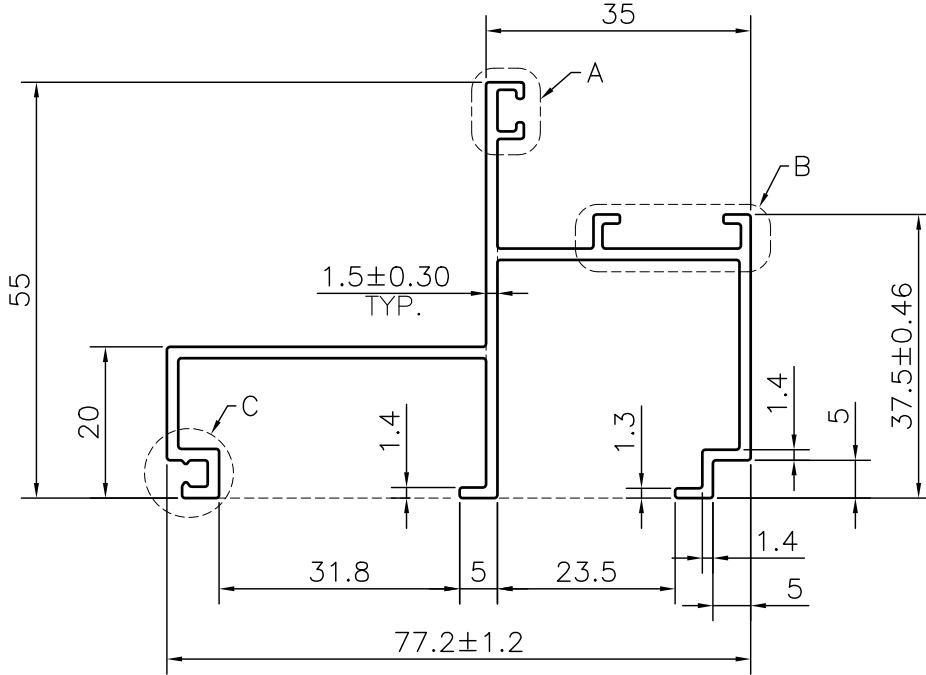


MAL NO.-9175

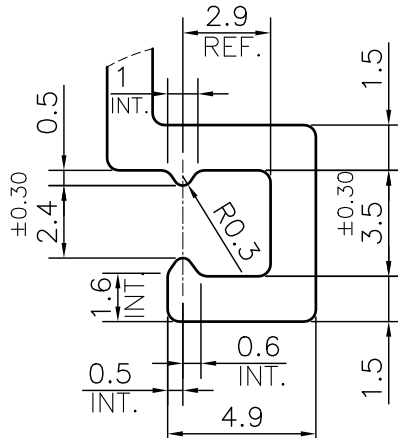
D3813



DETAIL B
SCALE 2:1



DETAIL A
SCALE 2:1



DETAIL C
SCALE 4:1

NOTE:-

*** = 0.30 RADIUS (4 PLACES)**

1. STRAIGHTNESS= 1.7mm/M
2. TWIST= 1.7mm/M
3. ANGULARITY= ±2°
4. FLATNESS= 0.007xWIDTH



SYMBOL OF QUALITY
AN ISO 9001 COMPANY

JINDAL ALUMINIUM LTD.
BHIWADI-301019 (INDIA)

| | | |
|----------------------|-------------|------------|
| | NAME | DATE |
| DRAWN | ASHUTOSH | 01-11-2023 |
| CHECKED | | |
| APPROVED | | |
| SCALE | 1:1 | |
| AREA mm ² | 327.089 | |
| PERIMETER mm. | 444.75 | |
| WEIGHT kg/m | 0.883 | |
| DRAWING No. | SECTION No. | |
| MAL NO.-9175 | D3813 | |
| D3813 | D3813 | |

1. ALL DIMENSIONS ARE IN mm.
2. ROUND OFF ALL SHARP CORNERS WITH 0.40 mm.
3. TOLERANCES WILL BE AS PER BS:EN-755-9 , UNLESS OTHERWISE SPECIFIED

| | | |
|---------------------|------------------------|--|
| PARTY'S NAME | AHLCON INDIA PVT. LTD. | |
| PARTY'S DRAWING No. | AS PER DRAWING | |
| ALLOY & TEMPER | 6063 T6 | PRODUCT CODE:-048 HSN CODE:- 76042990 |
| DESCRIPTION | WINDOW SECTION | |