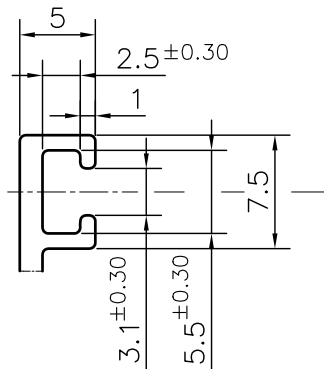
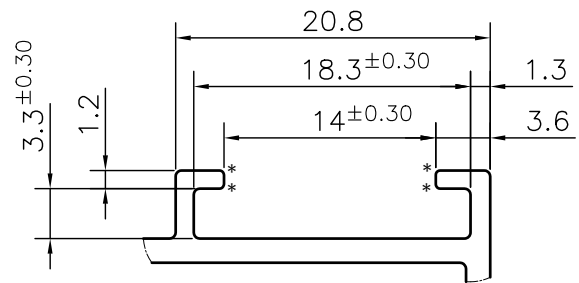


MAL NO.-9203

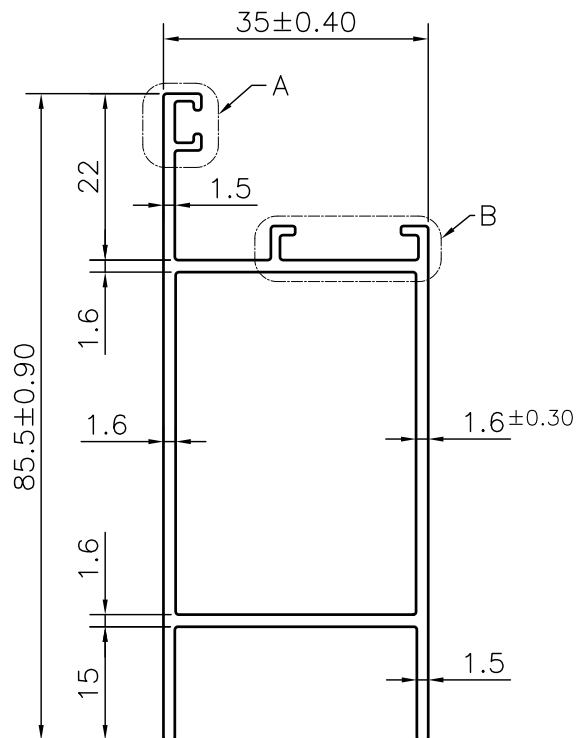
D3841



DETAIL A
SCALE 2:1



DETAIL B
SCALE 2:1



NOTE:-

*= 0.30 RADIUS (4 PLACES)

1. STRAIGHTNESS= 1.7mm/M
2. TWIST= 1.7mm/M
3. ANGULARITY= $\pm 2^\circ$
4. FLATNESS= 0.007xWIDTH



SYMBOL OF QUALITY
AN ISO 9001 COMPANY

JINDAL ALUMINIUM LTD.
BHIWADI-301019 (INDIA)

	NAME	DATE
DRAWN	ASHUTOSH	20-06-2024
CHECKED		
APPROVED		
SCALE		1:1
AREA mm ²		360.83
PERIMETER mm.		311.421
WEIGHT kg/m		0.974
DRAWING No.		SECTION No.
MAL NO.-9203		-
D3841		D3841

1. ALL DIMENSIONS ARE IN mm.
2. ROUND OFF ALL SHARP CORNERS WITH 0.40 mm.
3. TOLERANCES WILL BE AS PER BS:EN-755-9 , UNLESS OTHERWISE SPECIFIED

PARTY'S NAME	AHLCON INDIA PVT. LTD.	
PARTY'S DRAWING No.	AS PER DRAWING-D5 31	
ALLOY & TEMPER	6063 T6	PRODUCT CODE:-048 HSN CODE:- 76042100
DESCRIPTION	WINDOW SECTION	