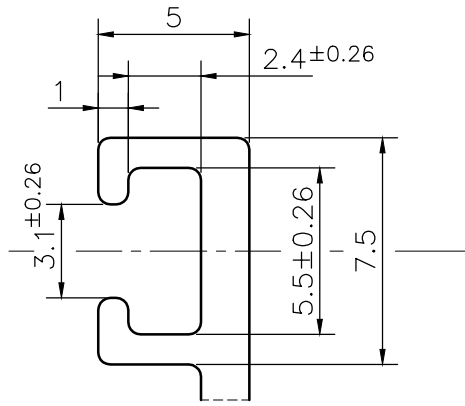
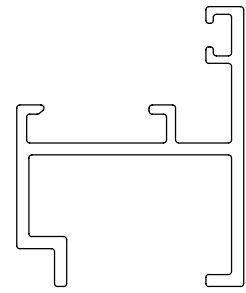


MAL NO.-10420

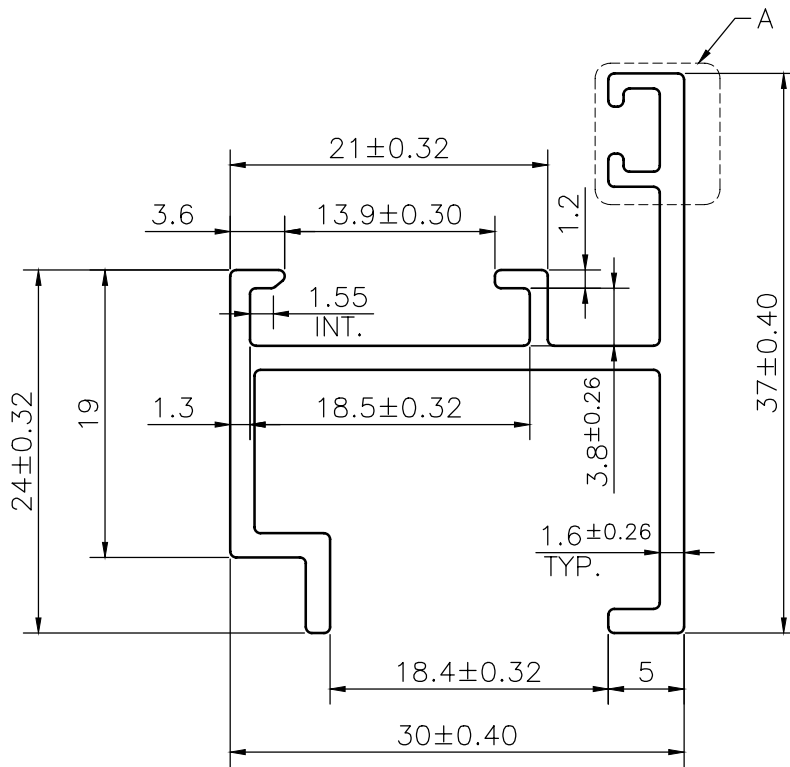
D4414



DETAIL A
SCALE 4:1



SCALE 1:1



1. STRAIGHTNESS= 1.7mm/M
2. TWIST= 1.7mm/M
3. ANGULARITY= ±2°
4. FLATNESS= 0.007xWIDTH



SYMBOL OF QUALITY
AN ISO 9001 COMPANY

JINDAL ALUMINIUM LTD.
BHIWADI-301019 (INDIA)

	NAME	DATE
DRAWN	ASHUTOSH	23-03-2024
CHECKED		
APPROVED		
SCALE		2:1
AREA mm ²		172.801
PERIMETER mm.		226.76
WEIGHT kg/m		0.467
DRAWING No.	SECTION No.	
MAL NO.-10420	-	
D4414	D4414	

1. ALL DIMENSIONS ARE IN mm.
2. ROUND OFF ALL SHARP CORNERS WITH 0.40 mm.
3. TOLERANCES WILL BE AS PER BS:EN-755-9 , UNLESS OTHERWISE SPECIFIED

PARTY'S NAME	AAP DIVISION	
PARTY'S DRAWING No.	AS PER DRAWING - T1	
ALLOY & TEMPER	6063 T6	PRODUCT CODE:-048
		HSN CODE:- 76042990
DESCRIPTION	WINDOW SECTION	