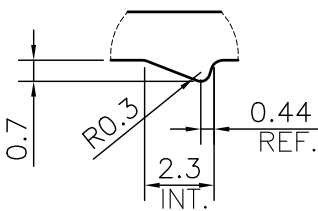
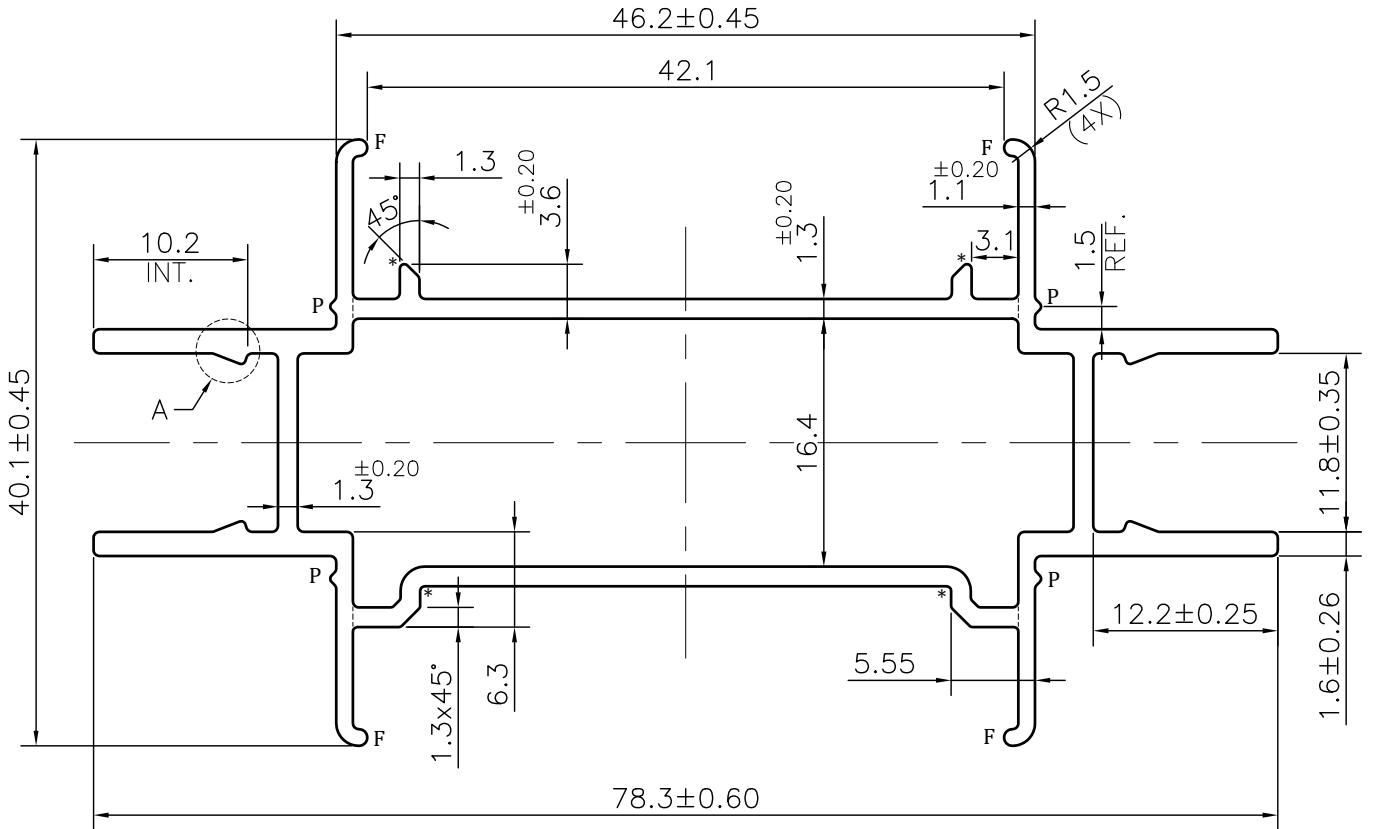
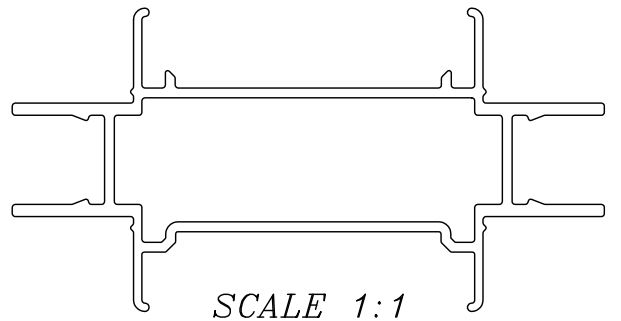


MAL NO-10886

D4562



DETAIL A
SCALE 4:1

NOTE:-

- *= 0.30 RADIUS (4 PLACES)
- F= FULL RADIUS (4 PLACES)
- P= 0.4x90° PIP (4 PLACES)

1. STRAIGHTNESS= 1.7mm/M
2. TWIST= 1.7mm/M
3. ANGULARITY= ±2°
4. FLATNESS= 0.007xWIDTH



SYMBOL OF QUALITY
AN ISO 9001 COMPANY

JINDAL ALUMINIUM LTD.
BHIWADI-301019 (INDIA)

	NAME	DATE
DRAWN	ASHUTOSH	10-10-2023
CHECKED		
APPROVED		
SCALE		2:1
AREA mm ²		326.715
PERIMETER mm.		335.327
WEIGHT kg/m		0.882
DRAWING No.	SECTION No.	
MAL NO-10886	-	
D4562	D4562	

1. ALL DIMENSIONS ARE IN mm.
2. ROUND OFF ALL SHARP CORNERS WITH 0.40 mm.
3. TOLERANCES WILL BE AS PER BS:EN-755-9 , UNLESS OTHERWISE SPECIFIED

PARTY'S NAME	S.M.W	
PARTY'S DRAWING No.	AS PER DRAWING	
ALLOY & TEMPER	6063 T6	PRODUCT CODE:-085
		HSN CODE:- 76042100
DESCRIPTION	INDUSTRIAL SECTION	