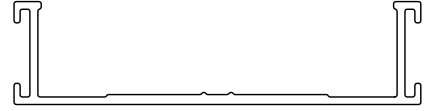
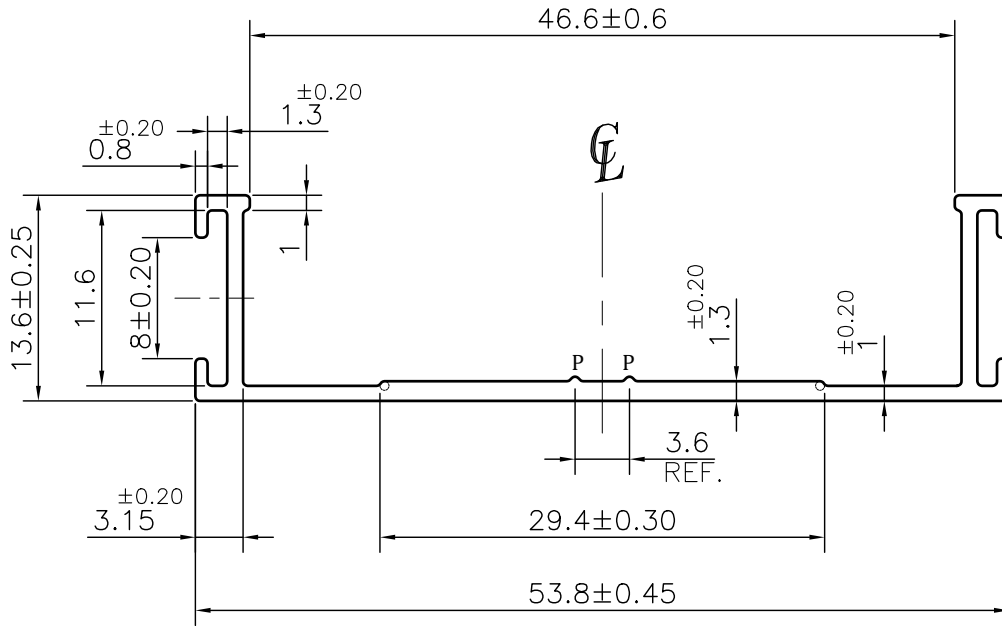


MAL NO-10887

D4563



SCALE 1:1



☞ ROUND OFF ALL SHARP CORNERS WITH 0.30 mm.

NOTE:-**P= 0.3x90° PIP (2 PLACES)**

1. STRAIGHTNESS= 1.7mm/M
2. TWIST= 1.7mm/M
3. ANGULARITY= $\pm 2^\circ$
4. FLATNESS= 0.007xWIDTH



SYMBOL OF QUALITY
AN ISO 9001 COMPANY

JINDAL ALUMINIUM LTD.
BHIWADI-301019 (INDIA)

	NAME	DATE
DRAWN	ASHUTOSH	10-10-2023
CHECKED		
APPROVED		
SCALE		2:1
AREA mm ²		100.159
PERIMETER mm.		181.64
WEIGHT kg/m		0.270
DRAWING No.		SECTION No.
MAL NO-10887		-
D4563		D4563

1. ALL DIMENSIONS ARE IN mm.
2. ROUND OFF ALL SHARP CORNERS WITH 0.40 mm.
3. TOLERANCES WILL BE AS PER BS:EN-755-9 , UNLESS OTHERWISE SPECIFIED

PARTY'S NAME	S.M.W	
PARTY'S DRAWING No.	AS PER DRAWING	
ALLOY & TEMPER	6063 T6	PRODUCT CODE:-085 HSN CODE:- 76042990
DESCRIPTION	INDUSTRIAL SECTION	