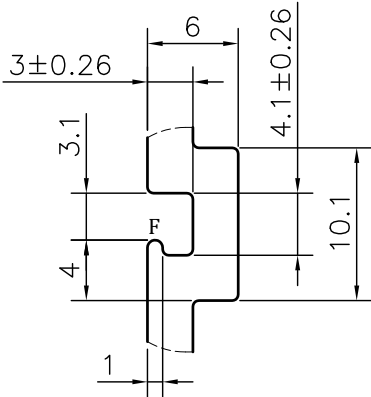
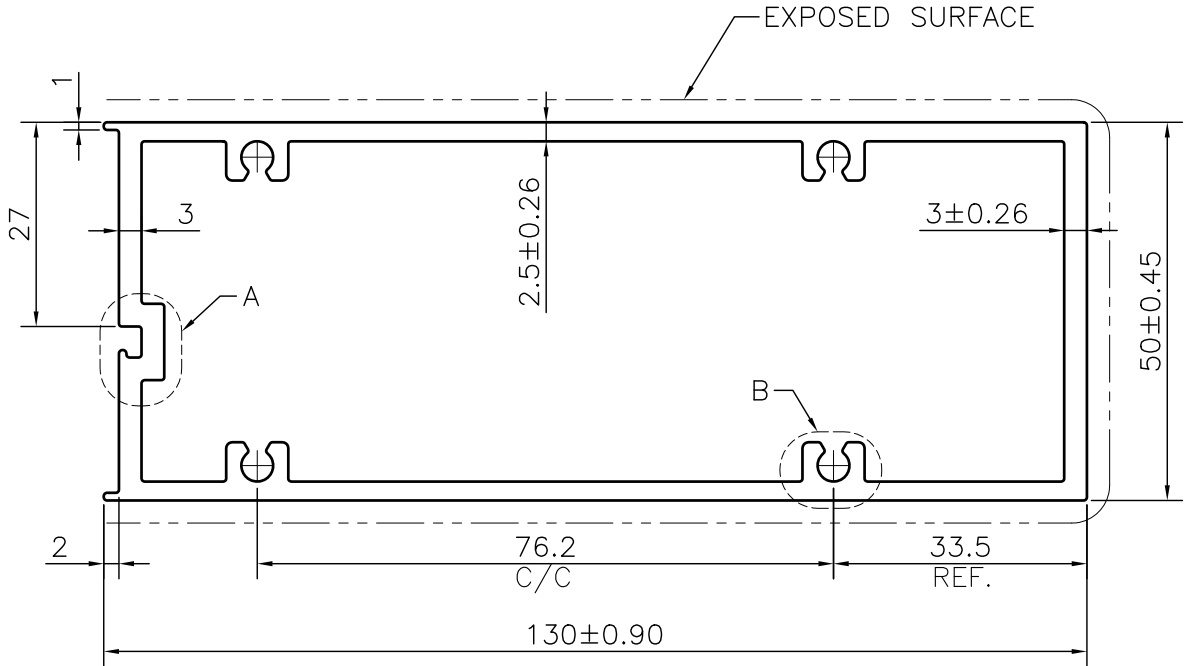
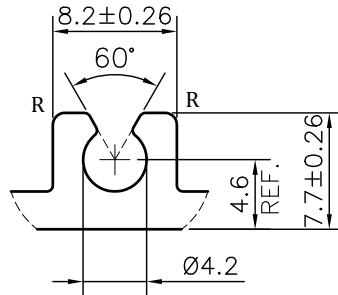


MAL NO.-11414

D4804



DETAIL A  
SCALE 2:1



DETAIL B  
SCALE 2:1

**NOTE:-**

**R= 0.80 RADIUS (8 PLACES)**  
**F= FULL RADIUS (1 PLACE)**

1. STRAIGHTNESS= 1.7mm/M
2. TWIST= 1.7mm/M
3. ANGULARITY= ±2°
4. FLATNESS= 0.007xWIDTH



SYMBOL OF QUALITY  
AN ISO 9001 COMPANY

**JINDAL ALUMINIUM LTD.**  
BHIWADI-301019 (INDIA)

	NAME	DATE
DRAWN	ASHUTOSH	13-12-2023
CHECKED		
APPROVED		
SCALE		1:1
AREA mm <sup>2</sup>		1034.042
PERIMETER mm.		369.511
WEIGHT kg/m		2.792
DRAWING No.	SECTION No.	
MAL NO.-11414	-	
D4804	D4804	

1. ALL DIMENSIONS ARE IN mm.
2. ROUND OFF ALL SHARP CORNERS WITH 0.40 mm.
3. TOLERANCES WILL BE AS PER BS:EN-755-9 , UNLESS OTHERWISE SPECIFIED

PARTY'S NAME	STAR ALUBUILD	
PARTY'S DRAWING No.	AS PER DRAWING	
ALLOY & TEMPER	6063 T6	PRODUCT CODE:-055
		HSN CODE:- 76042100
DESCRIPTION	CURTAIN WALL SECTION	