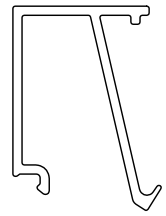
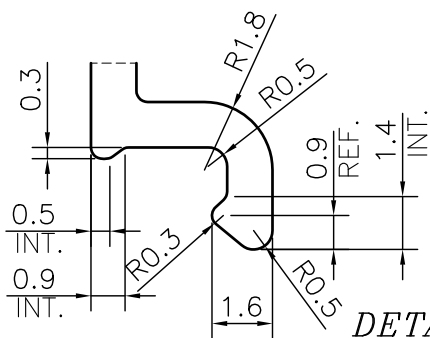
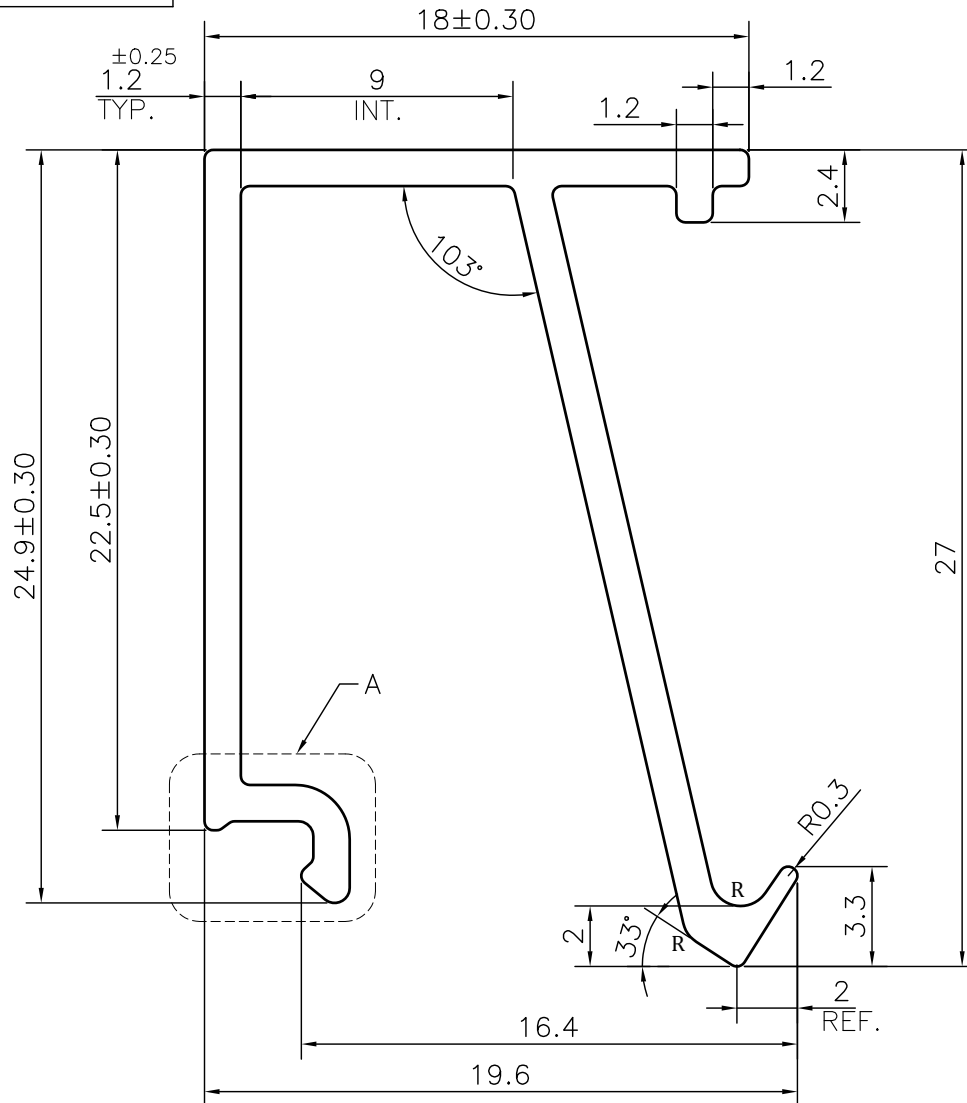


MAL NO-11699

D4952



SCALE 1:1



DETAIL A
SCALE 5:1

ROUND OFF ALL SHARP CORNERS WITH 0.30 mm.

NOTE:-**R= 1.0 RADIUS (2 PLACES)**

1. STRAIGHTNESS= 1.7mm/M
2. TWIST= 1.7mm/M
3. ANGULARITY= $\pm 2^\circ$
4. FLATNESS= 0.007xWIDTH



SYMBOL OF QUALITY
AN ISO 9001 COMPANY

JINDAL ALUMINIUM LTD.
BHIWADI-301019 (INDIA)

	NAME	DATE
DRAWN	ASHUTOSH	06-10-2023
CHECKED		
APPROVED		
SCALE		4:1
AREA mm ²		90.03
PERIMETER mm.		150.42
WEIGHT kg/m		0.243
DRAWING No.	SECTION No.	
MAL NO-11699	-	
D4952	D4952	

1. ALL DIMENSIONS ARE IN mm.
2. ROUND OFF ALL SHARP CORNERS WITH 0.40 mm.
3. TOLERANCES WILL BE AS PER BS:EN-755-9 , UNLESS OTHERWISE SPECIFIED

PARTY'S NAME	AAP DIVISION	
PARTY'S DRAWING No.	AS PER DRAWING	
ALLOY & TEMPER	6063 T6	PRODUCT CODE:-044
		HSN CODE:- 76042990
DESCRIPTION	GLAZING CLIP SECTION	