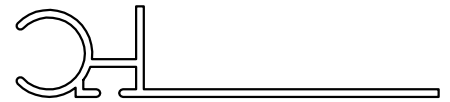
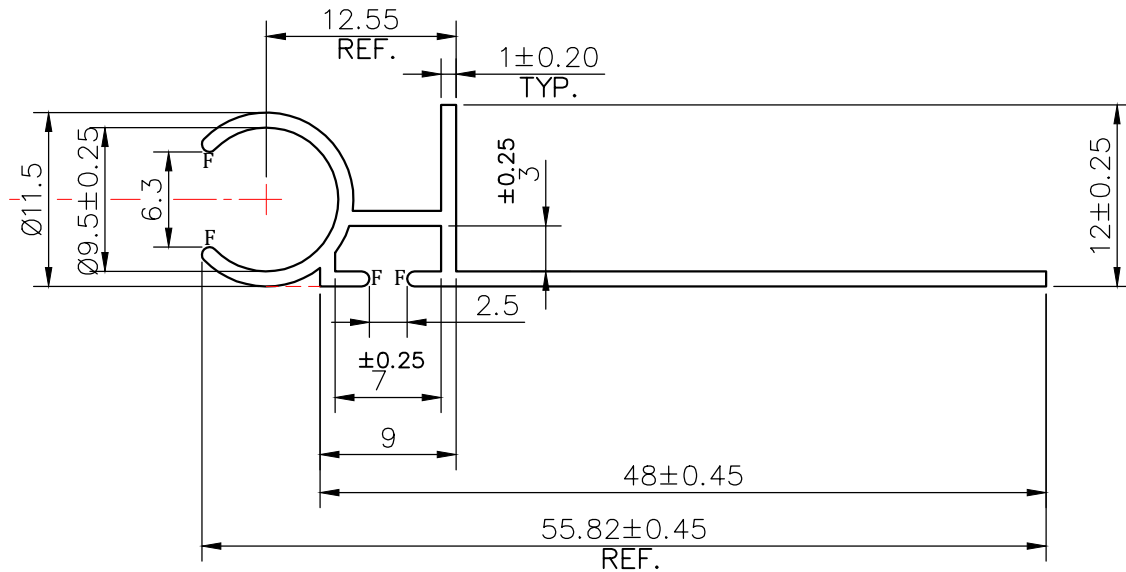


MAL-12543

D5345



SCALE 1:1

**NOTE:-****F= FULL RADIUS (4 PLACES)**

1. STRAIGHTNESS= 1.7mm/M
2. TWIST= 1.7mm/M
3. ANGULARITY=  $\pm 2^\circ$
4. FLATNESS= 0.007xWIDTH



SYMBOL OF QUALITY  
AN ISO 9001 COMPANY

**JINDAL ALUMINIUM LTD.**  
BHIWADI-301019 (INDIA)

	NAME	DATE
DRAWN	ASHUTOSH	17-07-2023

CHECKED		
APPROVED		

SCALE	2:1
-------	-----

AREA mm <sup>2</sup>	88.62
----------------------	-------

PERIMETER mm.	178.05
---------------	--------

WEIGHT kg/m	0.239
-------------	-------

DRAWING No.	SECTION No.
MAL-12543	
D5345	D5345


1. ALL DIMENSIONS ARE IN mm.
2. ROUND OFF ALL SHARP CORNERS WITH 0.40 mm.
3. TOLERANCES WILL BE AS PER BS:EN-755-9 , UNLESS OTHERWISE SPECIFIED

PARTY'S NAME	THREE R CONSTRUCTION SOLUTION PVT. LTD.
--------------	---

PARTY'S DRAWING No.	AS PER DRAWING
---------------------	----------------

ALLOY & TEMPER	6063 T6
----------------	---------

DESCRIPTION	MODULAR SECTION
-------------	-----------------