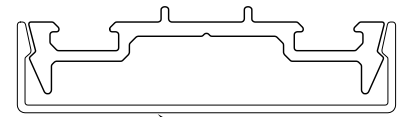
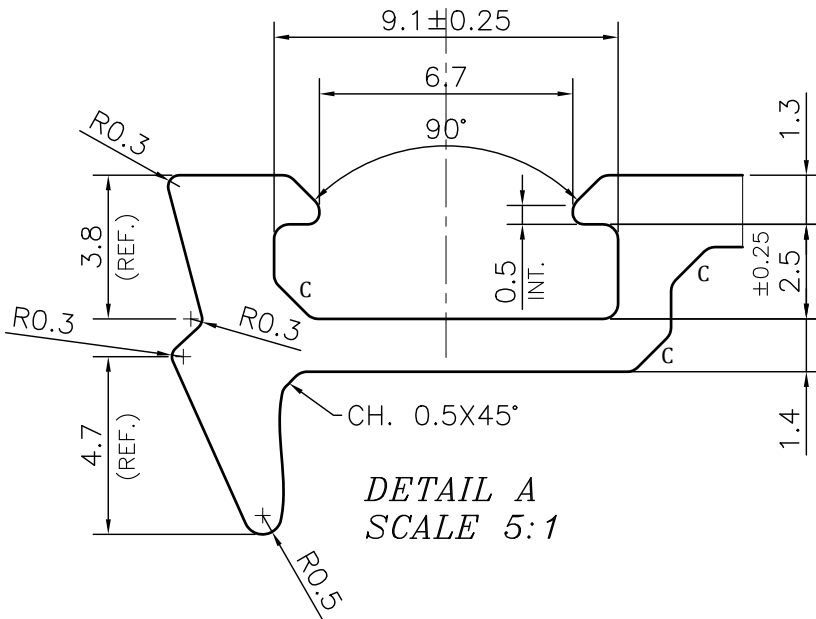
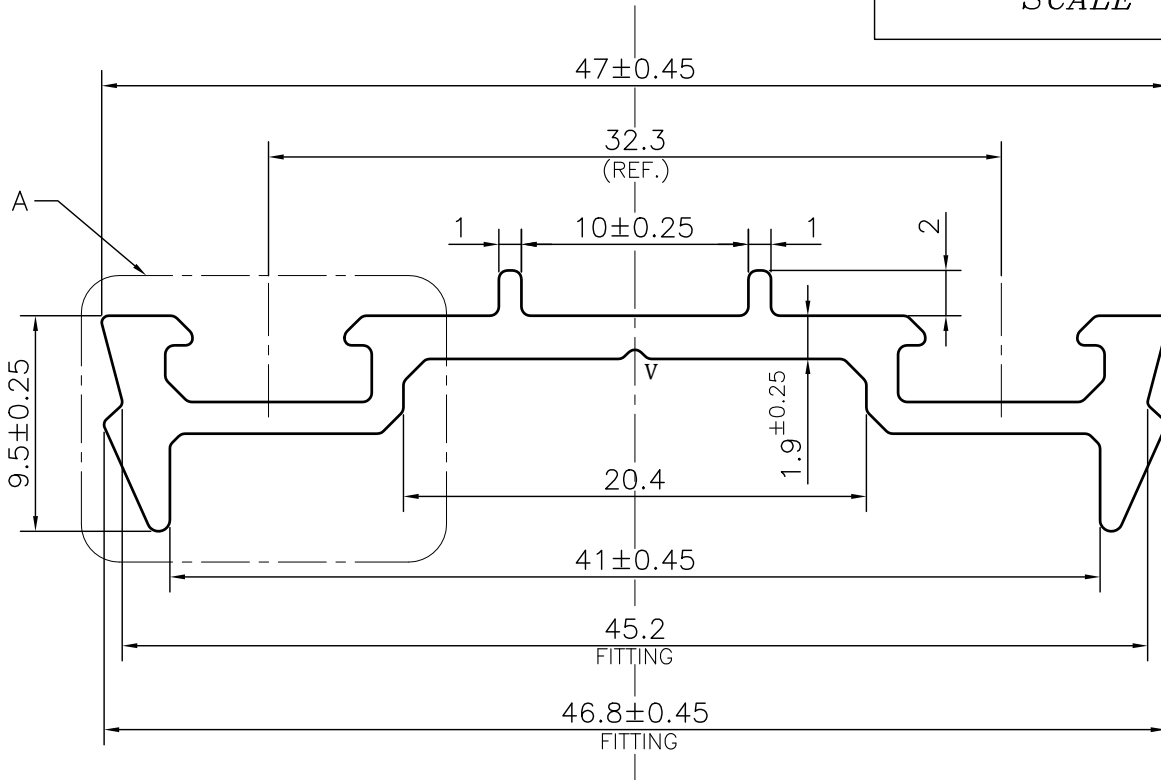


MAL NO.-12789

D5411

D5412
SCALE 1:1DETAIL A
SCALE 5:1**NOTE:-****C= 1x45° CHAMFER (8 PLACES)**
V= 0.4x90° V-GROOVE (1 PLACE)

1. STRAIGHTNESS= 1.7mm/M
2. TWIST= 1.7mm/M
3. ANGULARITY= ±2°
4. FLATNESS= 0.007xWIDTH

SYMBOL OF QUALITY
AN ISO 9001 COMPANY**JINDAL ALUMINIUM LTD.**
BHIWADI-301019 (INDIA)

	NAME	DATE
DRAWN	ASHUTOSH	19-06-2024
CHECKED		
APPROVED		
SCALE		3:1
AREA mm ²		128.869
PERIMETER mm.		148.53
WEIGHT kg/m		0.348
DRAWING No.	SECTION No.	
MAL NO.-12789	-	
D5411	D5411	

1. ALL DIMENSIONS ARE IN mm.
2. ROUND OFF ALL SHARP CORNERS WITH 0.40 mm.
3. TOLERANCES WILL BE AS PER BS:EN-755-9 , UNLESS OTHERWISE SPECIFIED

PARTY'S NAME	STAR ALUBUILD PVT. LTD.	
PARTY'S DRAWING No.	AS PER DRAWING-MUM-AL-014	
ALLOY & TEMPER	6063 T6	PRODUCT CODE:-055
		HSN CODE:- 76042990
DESCRIPTION	CURTAIN WALL SECTION	