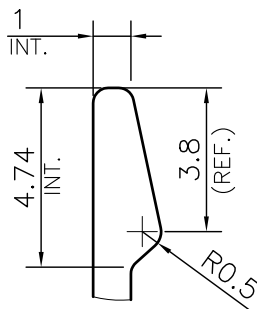
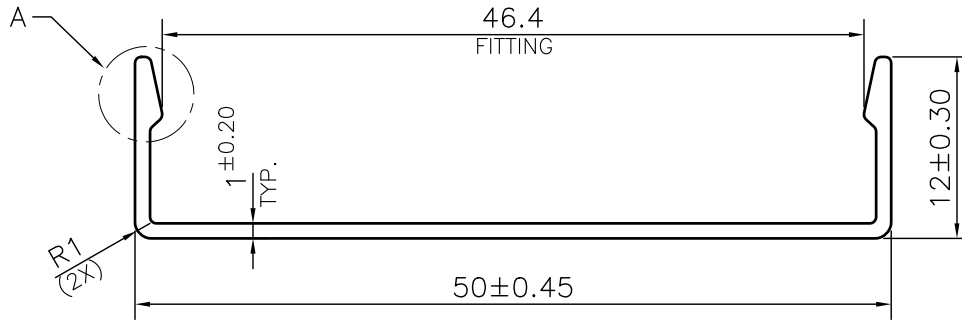
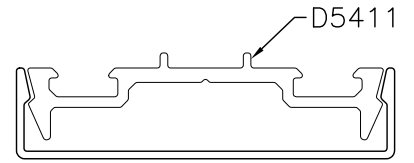


MAL NO.-12790

D5412



DETAIL A
SCALE 5:1

1. STRAIGHTNESS= 1.7mm/M
2. TWIST= 1.7mm/M
3. ANGULARITY= ±2°
4. FLATNESS= 0.007xWIDTH



SYMBOL OF QUALITY
AN ISO 9001 COMPANY

JINDAL ALUMINIUM LTD.
BHIWADI-301019 (INDIA)

	NAME	DATE
DRAWN	ASHUTOSH	19-06-2024
CHECKED		
APPROVED		
SCALE	2:1	
AREA mm ²	75.447	
PERIMETER mm.	144.95	
WEIGHT kg/m	0.204	
DRAWING No.	SECTION No.	
MAL NO.-12790	-	
D5412	D5412	

1. ALL DIMENSIONS ARE IN mm.
2. ROUND OFF ALL SHARP CORNERS WITH 0.40 mm.
3. TOLERANCES WILL BE AS PER BS:EN-755-9 , UNLESS OTHERWISE SPECIFIED

PARTY'S NAME	STAR ALUBUILD PVT. LTD.	
PARTY'S DRAWING No.	AS PER DRAWING-MUM-AL-017	
ALLOY & TEMPER	6063 T6	PRODUCT CODE:-055
		HSN CODE:- 76042990
DESCRIPTION	CURTAIN WALL SECTION	