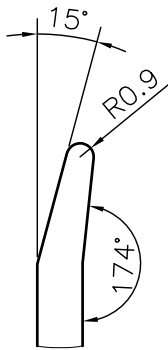
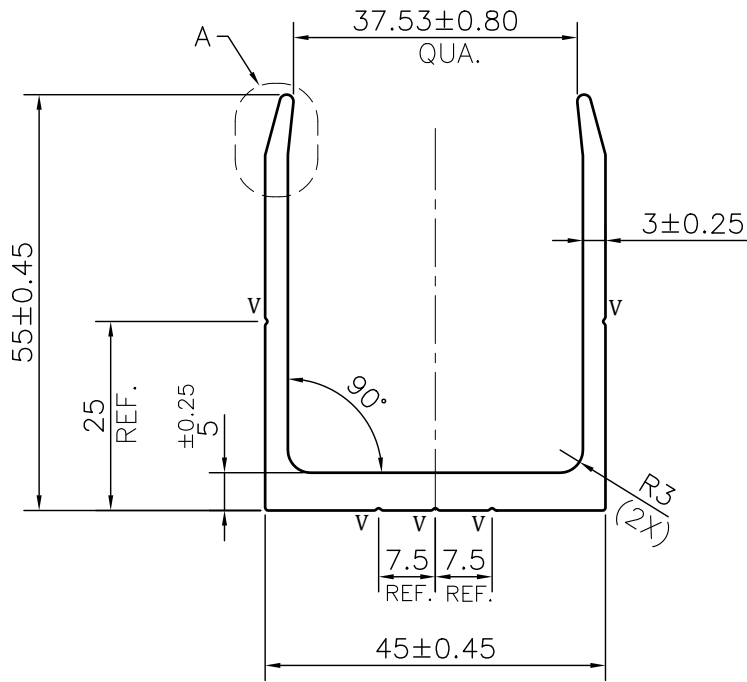


MAL NO-12854

D5448




DETAIL A
SCALE 2:1

NOTE:-

V = 0.3x103° V-GROOVE (5 PLACES)

1. STRAIGHTNESS= 1.7mm/M
2. TWIST= 1.7mm/M
3. ANGULARITY= ±2°
4. FLATNESS= 0.007xWIDTH

 SYMBOL OF QUALITY AN ISO 9001 COMPANY	JINDAL ALUMINIUM LTD. BHIWADI-301019 (INDIA)	NAME	DATE
		DRAWN	ASHUTOSH 29-09-2023
		CHECKED	
		APPROVED	
1. ALL DIMENSIONS ARE IN mm. 2. ROUND OFF ALL SHARP CORNERS WITH 0.40 mm. 3. TOLERANCES WILL BE AS PER BS:EN-755-9 , UNLESS OTHERWISE SPECIFIED		SCALE	1:1
		AREA mm ²	516.745
		PERIMETER mm.	294.59
		WEIGHT kg/m	1.395
PARTY'S NAME		STAR ALUBUILD PVT. LTD.	
PARTY'S DRAWING No.		AS PER DRAWING	
		DRAWING No.	SECTION No.
		MAL NO-12854	-
ALLOY & TEMPER		6063 T6	
		PRODUCT CODE:-055	
		HSN CODE:- 76042990	
DESCRIPTION		CURTAIN WALL SECTION	