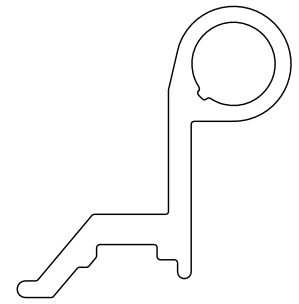
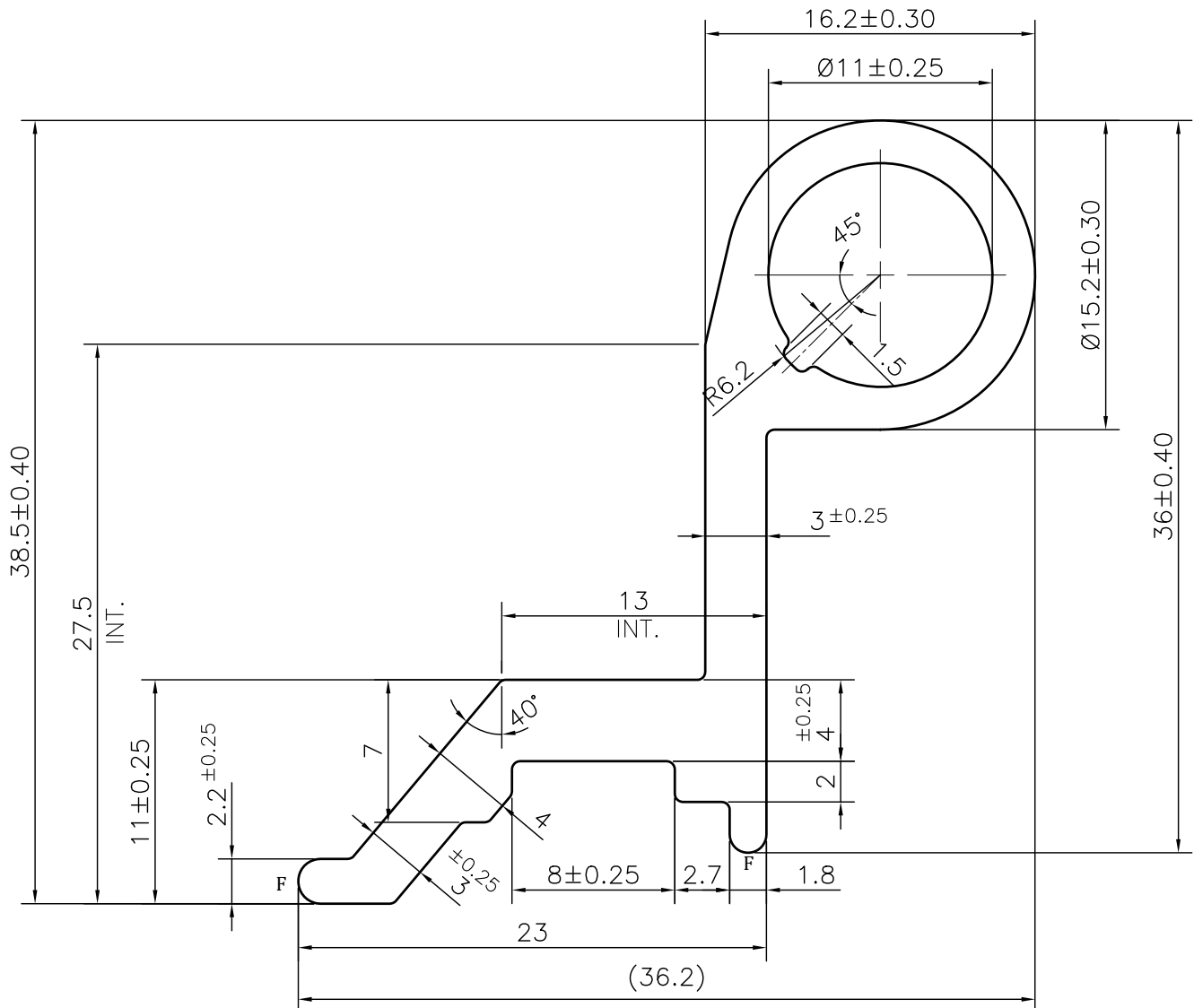


MAL NO.-13014

D5511



SCALE 1:1



**NOTE:-**  
**F= FULL RADIUS (2 PLACES)**

1. STRAIGHTNESS= 1.7mm/M
2. TWIST= 1.7mm/M
3. ANGULARITY=  $\pm 2^\circ$
4. FLATNESS= 0.007xWIDTH



SYMBOL OF QUALITY  
AN ISO 9001 COMPANY

**JINDAL ALUMINIUM LTD.**  
 BHIWADI-301019 (INDIA)

	NAME	DATE
DRAWN	ASHUTOSH	22-07-2024
CHECKED		
APPROVED		
SCALE		3:1
AREA mm <sup>2</sup>		246.467
PERIMETER mm.		137.294
WEIGHT kg/m		0.665
DRAWING No.		SECTION No.
MAL NO.-13014		-
D5511		D5511

1. ALL DIMENSIONS ARE IN mm.
2. ROUND OFF ALL SHARP CORNERS WITH 0.40 mm.
3. TOLERANCES WILL BE AS PER BS:EN-755-9 , UNLESS OTHERWISE SPECIFIED

PARTY'S NAME	AGV ALFAB	
PARTY'S DRAWING No.	AS PER DRAWING	
ALLOY & TEMPER	6063 T6	PRODUCT CODE:-034
		HSN CODE:- 76042100
DESCRIPTION	HINGE SECTION	