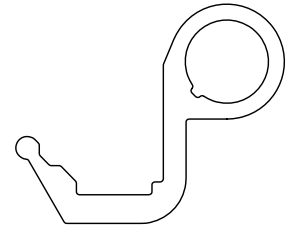
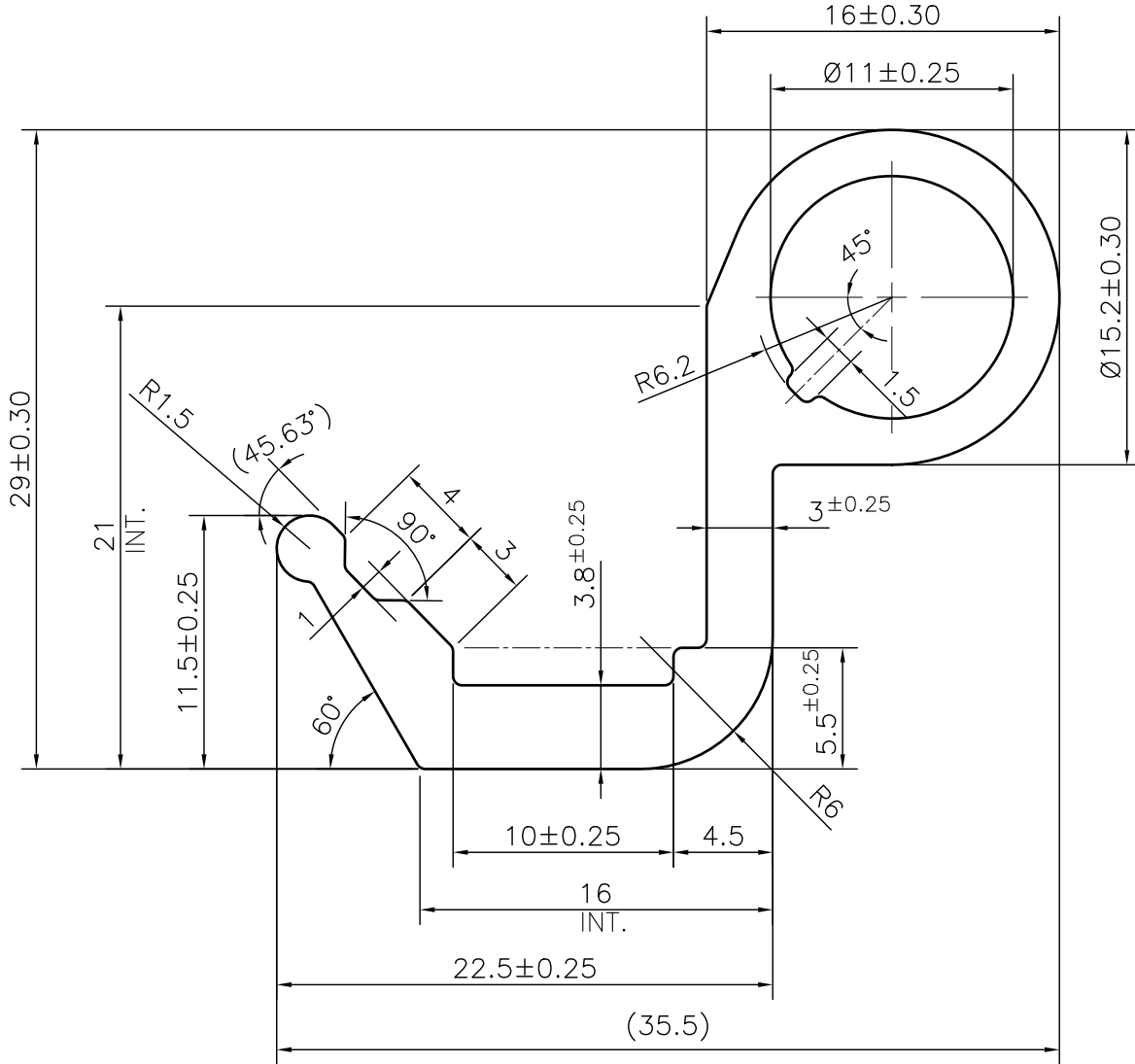


MAL NO.-13015

D5512



SCALE 1:1



1. STRAIGHTNESS= 1.7mm/M
2. TWIST= 1.7mm/M
3. ANGULARITY= $\pm 2^\circ$
4. FLATNESS= 0.007xWIDTH



SYMBOL OF QUALITY
AN ISO 9001 COMPANY

JINDAL ALUMINIUM LTD.
BHIWADI-301019 (INDIA)

	NAME	DATE
DRAWN	ASHUTOSH	22-07-2024
CHECKED		
APPROVED		
SCALE		3:1
AREA mm ²		220.464
PERIMETER mm.		122.815
WEIGHT kg/m		0.595
DRAWING No.	SECTION No.	
MAL NO.-13015	-	
D5512	D5512	

1. ALL DIMENSIONS ARE IN mm.
2. ROUND OFF ALL SHARP CORNERS WITH 0.40 mm.
3. TOLERANCES WILL BE AS PER BS:EN-755-9, UNLESS OTHERWISE SPECIFIED

PARTY'S NAME	AGV ALFAB	
PARTY'S DRAWING No.	AS PER DRAWING	
ALLOY & TEMPER	6063 T6	PRODUCT CODE:-034
		HSN CODE:- 76042100
DESCRIPTION	HINGE SECTION	