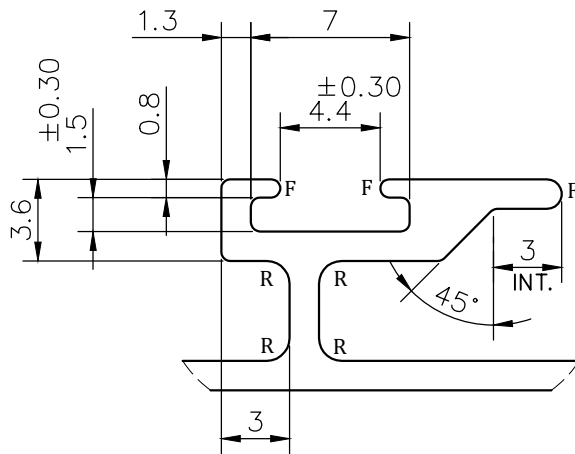
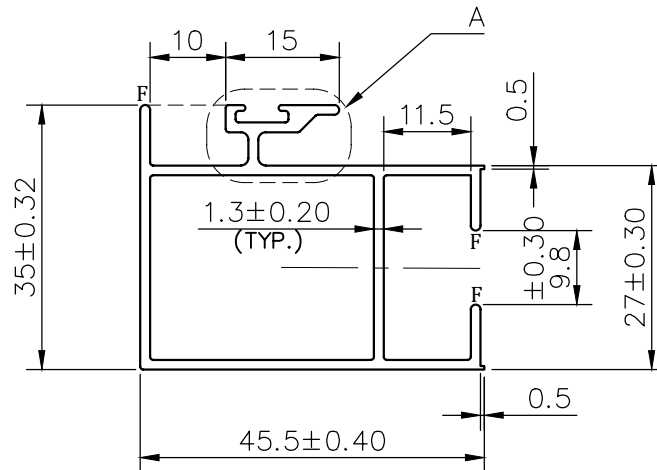


IAL-D-596

D596



DETAIL A  
SCALE 3:1

**NOTE:-**  
**R= 1.0 RADIUS (4 PLACES)**  
**F= FULL RADIUS (6 PLACES)**

1. STRAIGHTNESS= 1.7mm/M
2. TWIST= 1.7mm/M
3. ANGULARITY=  $\pm 2^\circ$
4. FLATNESS= 0.007xWIDTH



SYMBOL OF QUALITY  
AN ISO 9001 COMPANY

**JINDAL ALUMINIUM LTD.**  
 BHIWADI-301019 (INDIA)

	NAME	DATE
DRAWN	ASHUTOSH	03-07-2023

CHECKED		
APPROVED		

SCALE	1:1
-------	-----

AREA mm <sup>2</sup>	246.78
----------------------	--------

PERIMETER mm.	262.10
---------------	--------

WEIGHT kg/m	0.666
-------------	-------

DRAWING No.	SECTION No.
IAL-D-596	
D596	D596

1. ALL DIMENSIONS ARE IN mm.
2. ROUND OFF ALL SHARP CORNERS WITH 0.40 mm.
3. TOLERANCES WILL BE AS PER BS:EN-755-9 , UNLESS OTHERWISE SPECIFIED

PARTY'S NAME	TIT
--------------	-----

PARTY'S DRAWING No.	AS PER DRAWING
---------------------	----------------

ALLOY & TEMPER	HE9-WP
----------------	--------

DESCRIPTION	WINDOW SECTION
-------------	----------------