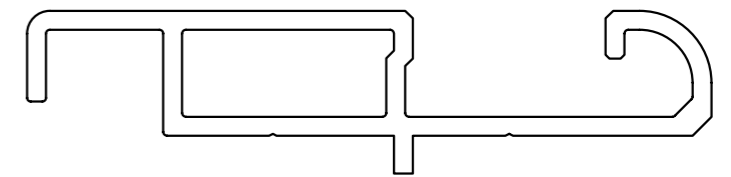
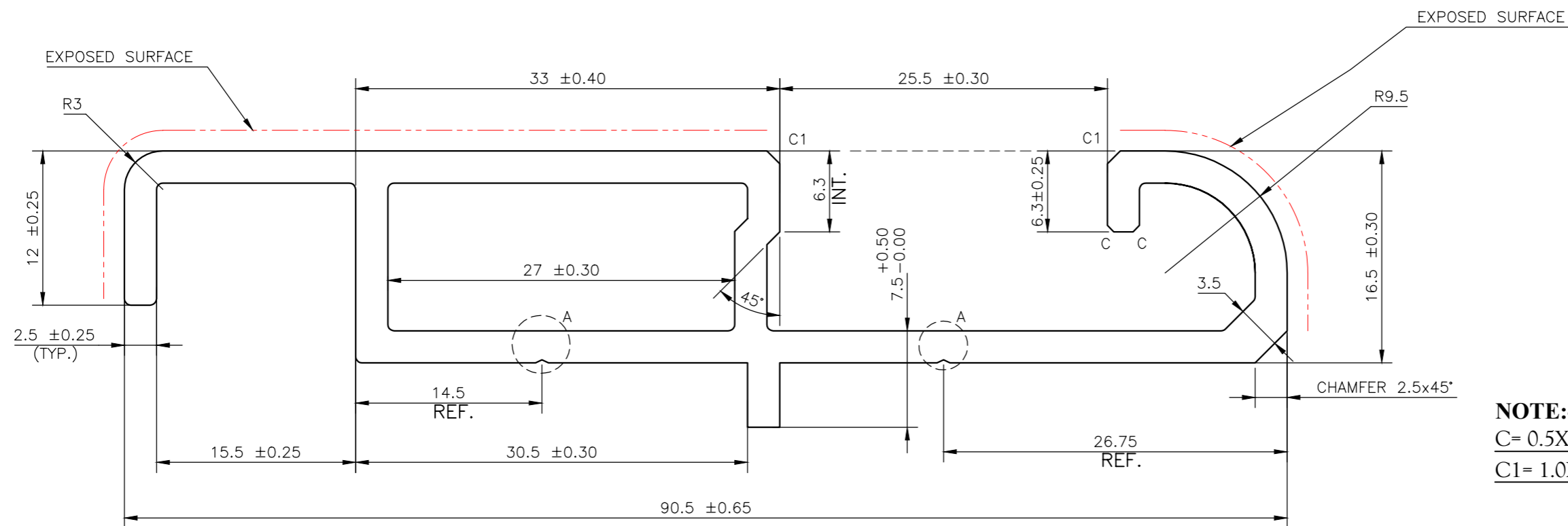


IAL-D-6298

D6298

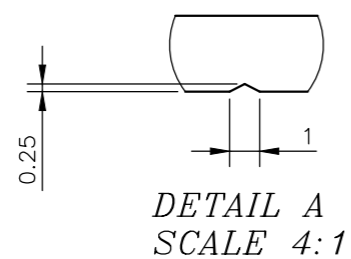


SCALE 1:1



NOTE:-
 C= 0.5X45° CHAMFER (2 PLACES)
 C1= 1.0X45° CHAMFER (2 PLACES)

TWIST= ±1/4°/300M.M./M.
 FLATNESS=WIDTHX0.005mm.
 STRAIGHTNESS= 1.5 M.M./MTR.
 ANGULARITY= ±1.5°



<p>SYMBOL OF QUALITY AN ISO 9001 COMPANY</p>	<p>JINDAL ALUMINIUM LTD. BANGALORE-560073 (INDIA)</p>		NAME	DATE
			DRAWN	ASHUTOSH
<p>1. ALL DIMENSIONS ARE IN mm. 2. ROUND OFF ALL SHARP CORNERS WITH 0.40 mm. 3. TOLERANCES WILL BE AS PER BS:EN-755-9 , UNLESS OTHERWISE SPECIFIED</p>			CHECKED	
			APPROVED	
<p>PARTY'S NAME M/S. METAFLEX</p>			SCALE	2.5:1&4:1
			AREA mm ²	465.16
<p>PARTY'S DRAWING No. AS PER DRAWING</p>			PERIMETER mm.	288.86
			WEIGHT kg/m	1.256
<p>ALLOY & TEMPER 6063 T6</p>			DRAWING No.	SECTION No.
			IAL-D-6298	-
<p>DESCRIPTION ARCHITECTURAL MISCELLANEOUS SECTION</p>			D6298	D6298
			PRODUCT CODE:-056	
			HSN CODE:-76042100	