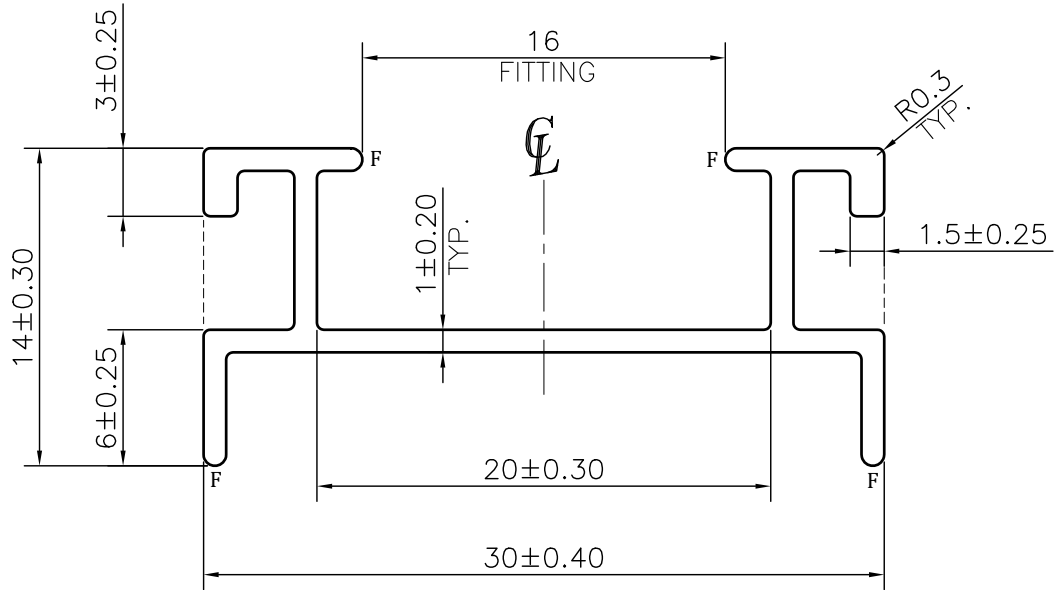
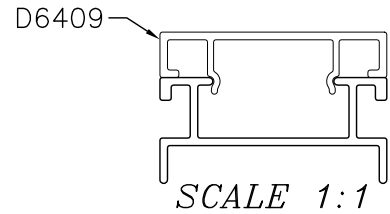


MAL NO-14920

D6408



ROUND OFF ALL SHARP CORNERS WITH 0.30 mm.

NOTE:-**F= FULL RADIUS (4 PLACES)**

1. STRAIGHTNESS= 1.7mm/M
2. TWIST= 1.7mm/M
3. ANGULARITY= $\pm 2^\circ$
4. FLATNESS= 0.007xWIDTH



SYMBOL OF QUALITY
AN ISO 9001 COMPANY

JINDAL ALUMINIUM LTD.
BHIWADI-301019 (INDIA)

	NAME	DATE
DRAWN	ASHUTOSH	09-10-2023
CHECKED		
APPROVED		
SCALE		3:1
AREA mm ²		73.648
PERIMETER mm.		141.71
WEIGHT kg/m		0.199
DRAWING No.		SECTION No.
MAL NO-14920		-
D6408		D6408

1. ALL DIMENSIONS ARE IN mm.
2. ROUND OFF ALL SHARP CORNERS WITH 0.40 mm.
3. TOLERANCES WILL BE AS PER BS:EN-755-9, UNLESS OTHERWISE SPECIFIED

PARTY'S NAME	CPM SYSTEM	
PARTY'S DRAWING No.	AS PER DRAWING	
ALLOY & TEMPER	6063 T6	PRODUCT CODE:-051
		HSN CODE:- 76042990
DESCRIPTION	FURNITURE SECTION	