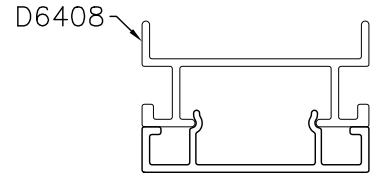
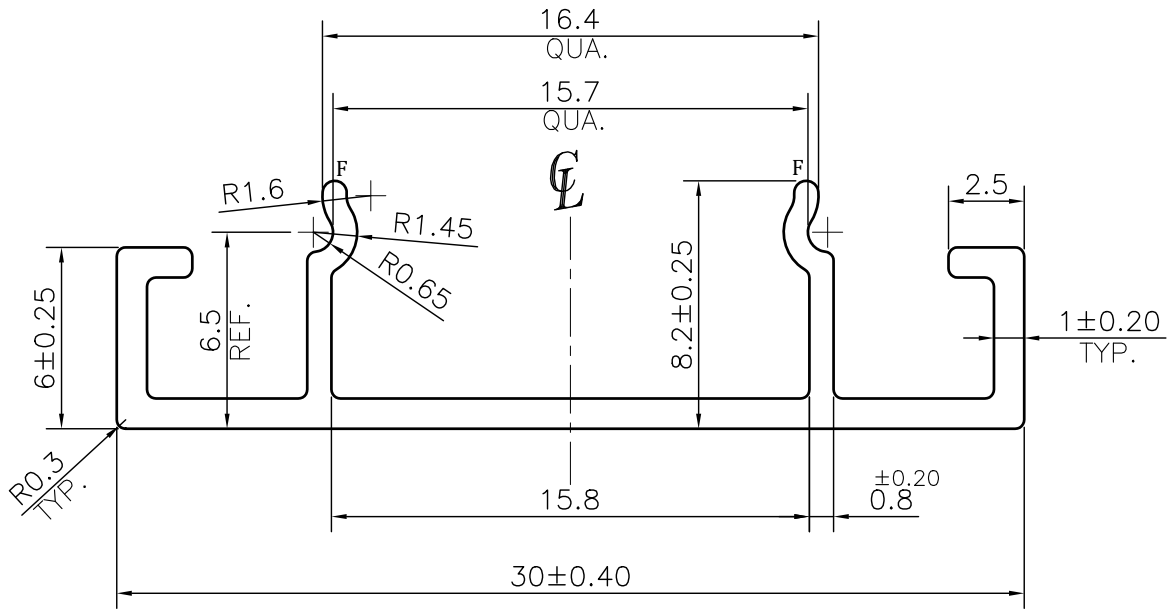


MAL NO-14921

D6409



SCALE 1:1



☞ ROUND OFF ALL SHARP CORNERS WITH 0.30 mm.

- 1. STRAIGHTNESS= 1.7mm/M
- 2. TWIST= 1.7mm/M
- 3. ANGULARITY= ±2°
- 4. FLATNESS= 0.007xWIDTH



SYMBOL OF QUALITY  
AN ISO 9001 COMPANY

**JINDAL ALUMINIUM LTD.**  
BHIWADI-301019 (INDIA)

	NAME	DATE
DRAWN	ASHUTOSH	09-10-2023
CHECKED		
APPROVED		
SCALE		4:1
AREA mm <sup>2</sup>		55.154
PERIMETER mm.		115.82
WEIGHT kg/m		0.149
DRAWING No.		SECTION No.
MAL NO-14921		-
D6409		D6409

- 1. ALL DIMENSIONS ARE IN mm.
- 2. ROUND OFF ALL SHARP CORNERS WITH 0.40 mm.
- 3. TOLERANCES WILL BE AS PER BS:EN-755-9 , UNLESS OTHERWISE SPECIFIED

PARTY'S NAME	CPM SYSTEM	
PARTY'S DRAWING No.	AS PER DRAWING	
ALLOY & TEMPER	6063 T6	PRODUCT CODE:-051
		HSN CODE:- 76042990
DESCRIPTION	FURNITURE SECTION	