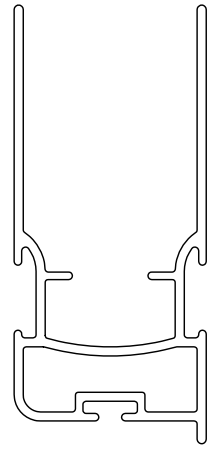
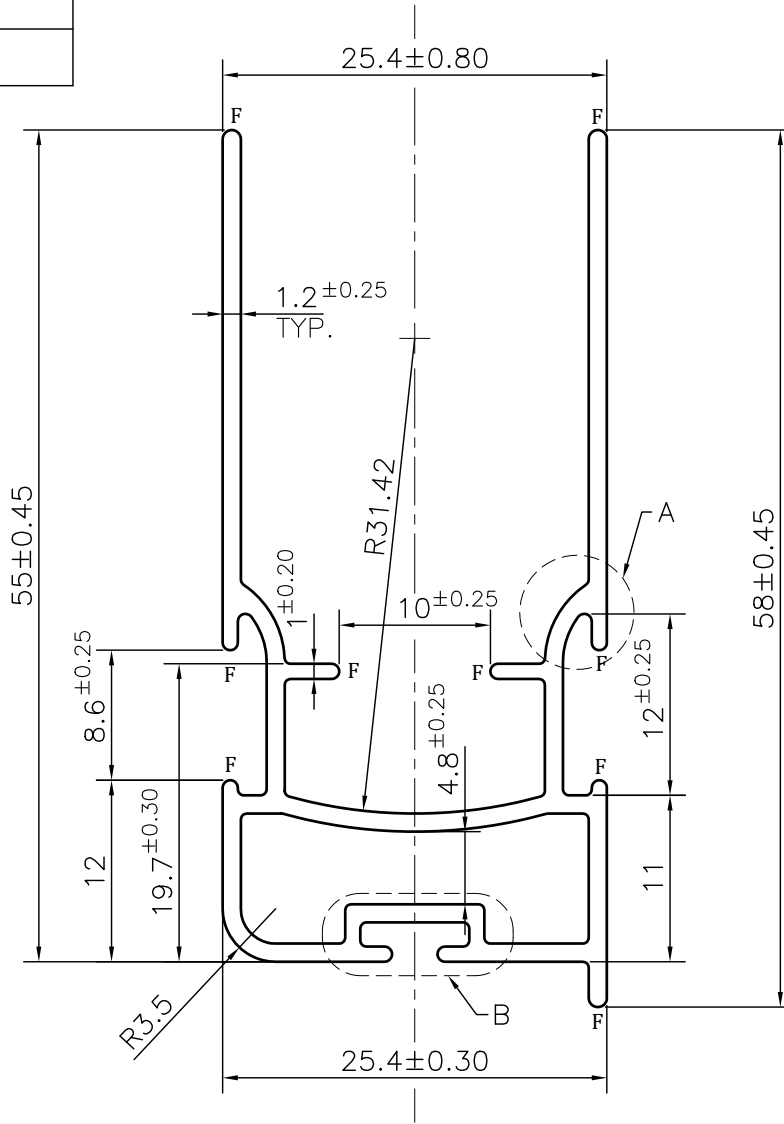
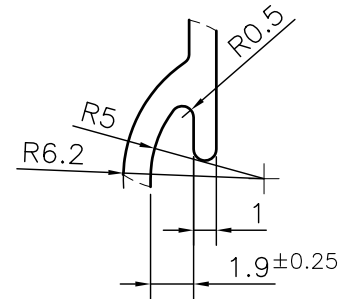


MAL NO.-13796

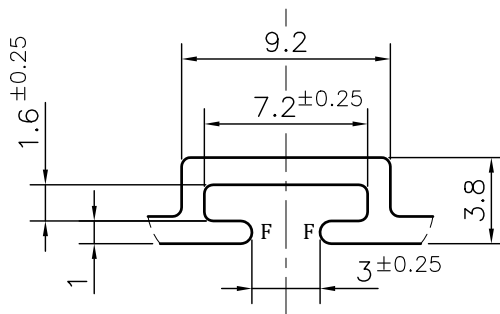
D6518



SCALE 1:1



DETAIL A
SCALE 3:1



DETAIL B
SCALE 3:1

NOTE:-
F= FULL RADIUS (11 PLACES)

1. STRAIGHTNESS= 1.7mm/M
2. TWIST= 1.7mm/M
3. ANGULARITY= ±2°
4. FLATNESS= 0.007xWIDTH



SYMBOL OF QUALITY
AN ISO 9001 COMPANY

JINDAL ALUMINIUM LTD.
BHIWADI-301019 (INDIA)

	NAME	DATE
DRAWN	ASHUTOSH	09-01-2024
CHECKED		
APPROVED		
SCALE		2:1
AREA mm ²		217.637
PERIMETER mm.		293.229
WEIGHT kg/m		0.588
DRAWING No.	SECTION No.	
MAL NO.-13796	-	
D6518	D6518	

1. ALL DIMENSIONS ARE IN mm.
2. ROUND OFF ALL SHARP CORNERS WITH 0.40 mm.
3. TOLERANCES WILL BE AS PER BS:EN-755-9 , UNLESS OTHERWISE SPECIFIED

PARTY'S NAME	ROLLON OVERSEAS	
PARTY'S DRAWING No.	AS PER DRAWING	
ALLOY & TEMPER	6063 T6	PRODUCT CODE:-056
		HSN CODE:- 76042100
DESCRIPTION	ARCHITECTURAL MISC. SECTION	