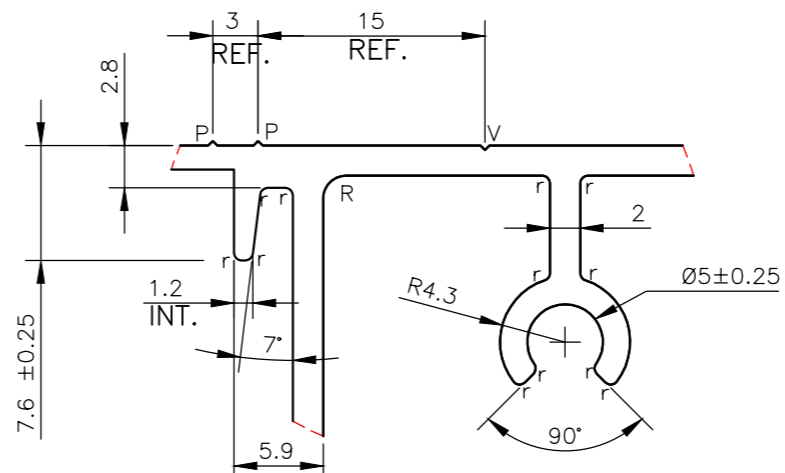
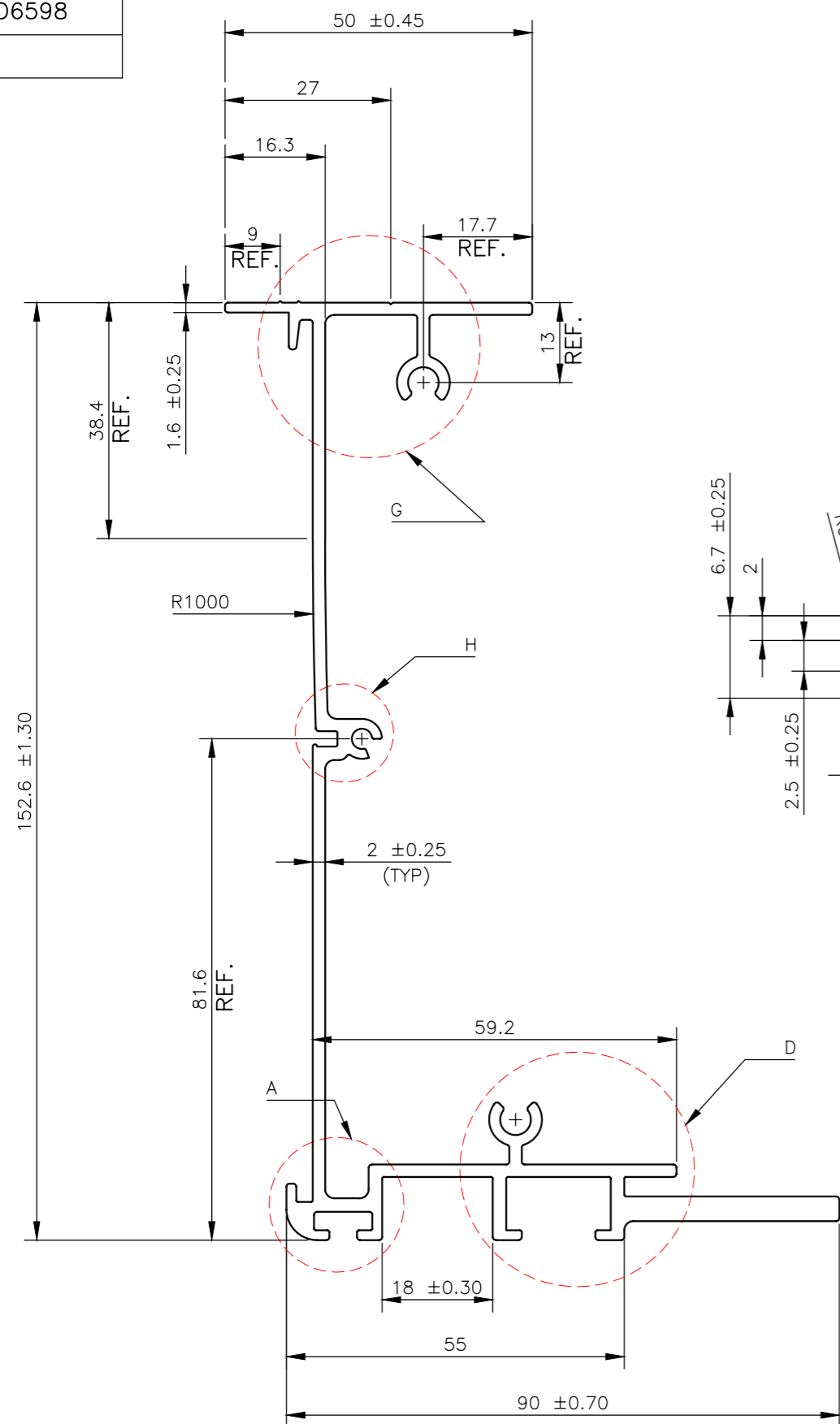
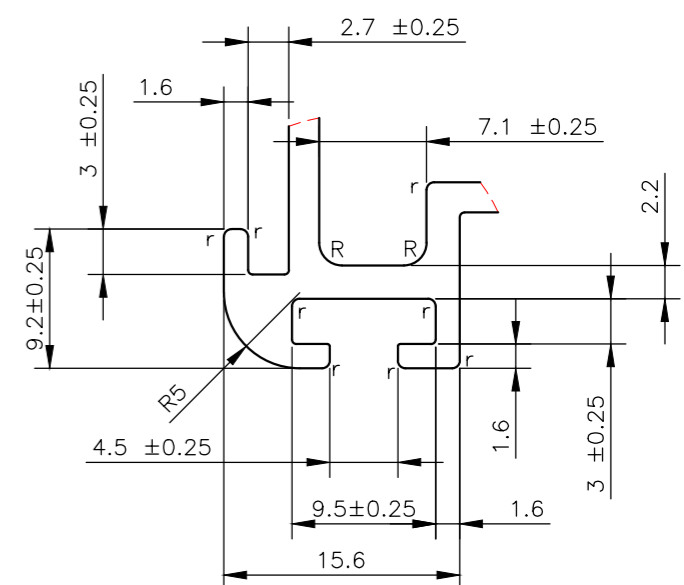


MAL-15057

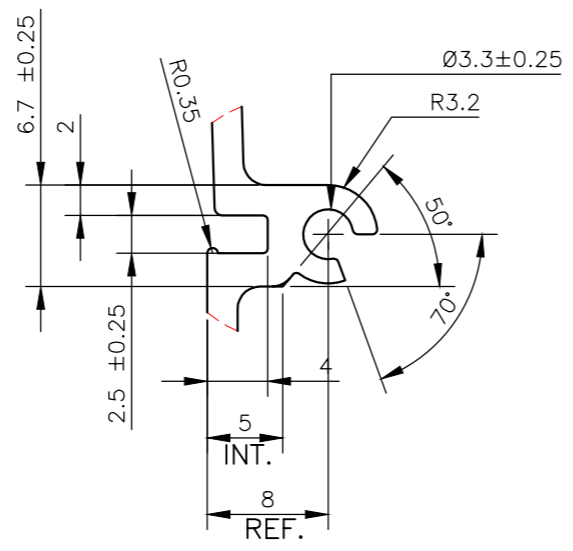
D6598



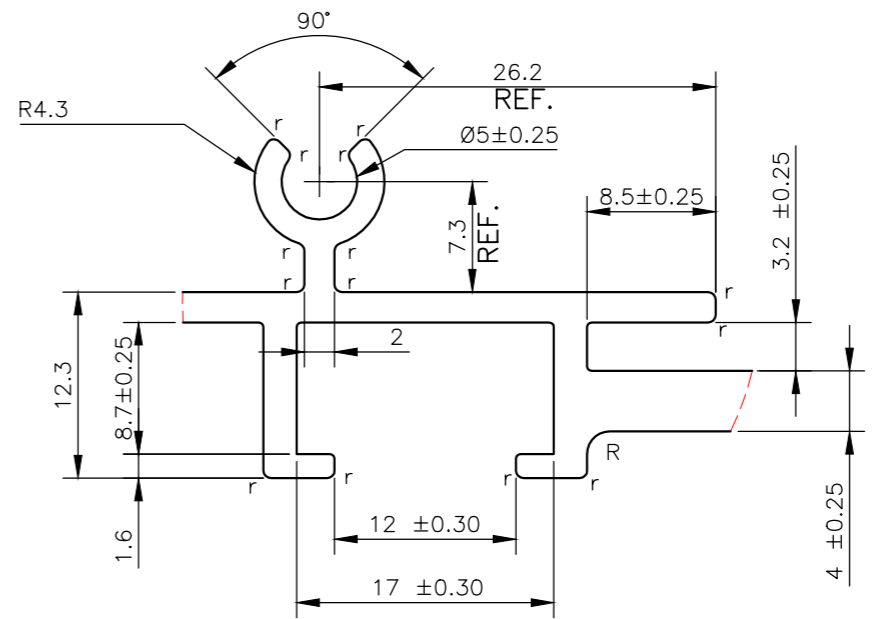
DETAIL-G
SCALE 2:1



DETAIL-A
SCALE 2:1




DETAIL-H
SCALE 2:1



DETAIL-D
SCALE 2:1

NOTE:-
r= 0.50 RADIUS
R= 1.50 RADIUS
V= 0.4x90° V-GROOVE
P= 0.4x90° PIP

TWIST= ±1/4"/300M.M./M.
 FLATNESS=WIDTHX0.005mm.
 STRAIGHTNESS= 1.5 M.M./MTR.
 ANGULARITY= ±1.5°

 SYMBOL OF QUALITY AN ISO 9001 COMPANY	JINDAL ALUMINIUM LTD. BANGALORE-560073 (INDIA)	NAME	DATE
		DRAWN	ASHUTOSH 10-05-2022
		CHECKED	
		APPROVED	
		SCALE	1:1
		AREA mm ²	872.24
		PERIMETER mm.	792.23
		WEIGHT kg/m	2.355
PARTY'S NAME	M/S. ANTARCTICA EQUIPMENT	DRAWING No.	SECTION No.
PARTY'S DRAWING No.	AS PER DRAWING	MAL-15057	-
ALLOY & TEMPER	6063 T6	D6598	D6598
DESCRIPTION	INDUSTRIAL SECTION		

1. ALL DIMENSIONS ARE IN mm.
 2. ROUND OFF ALL SHARP CORNERS WITH 0.40 mm.
 3. TOLERANCES WILL BE AS PER BS:EN-755-9 , UNLESS OTHERWISE SPECIFIED