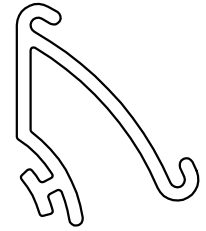
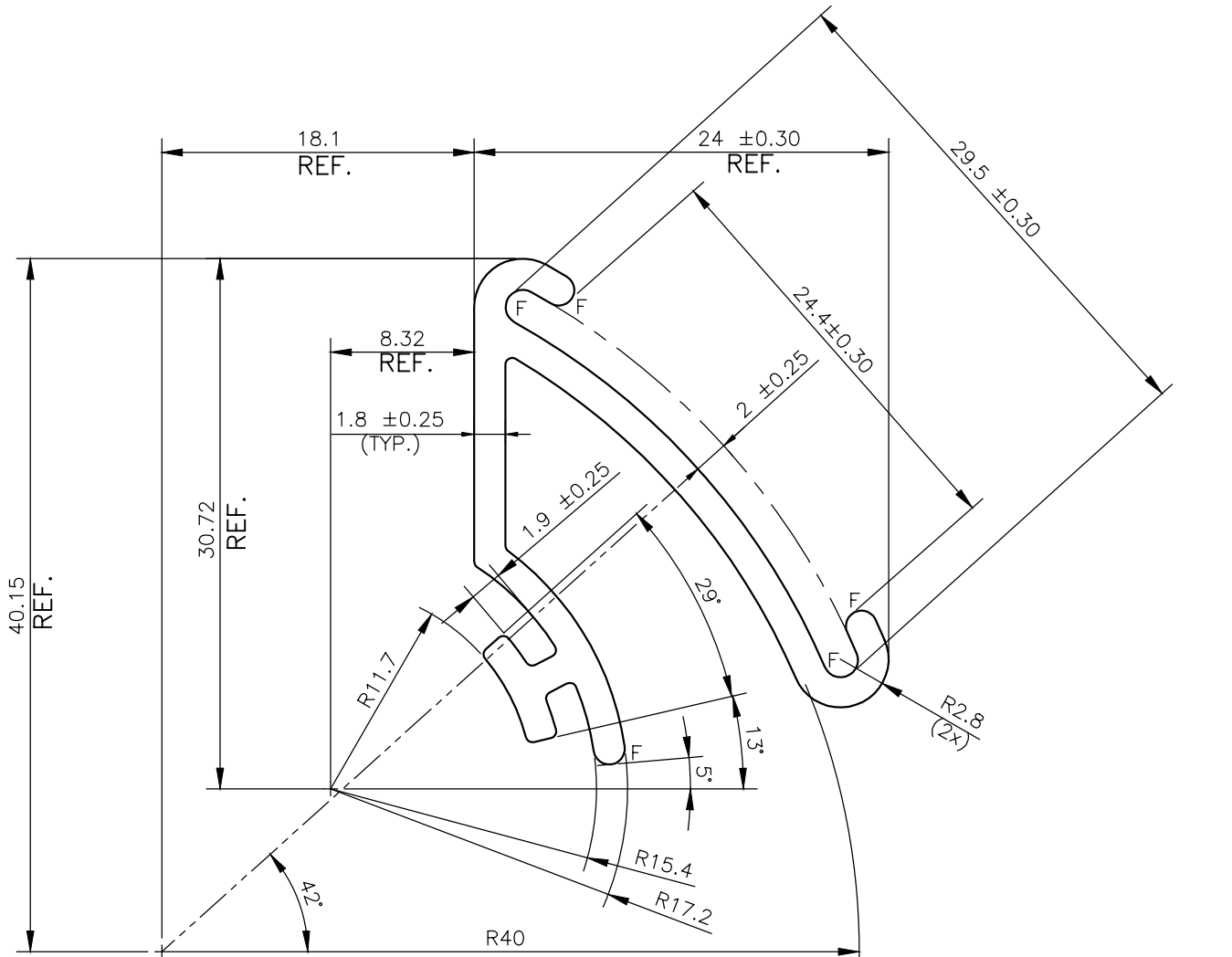


MAL-15101

D6599



SCALE 1:1



NOTE:-
F= FULL RADIUS

TWIST= $\pm 1/4^\circ/300\text{M.M./M.}$
 FLATNESS= $\text{WIDTH} \times 0.005\text{mm.}$
 STRAIGHTNESS= 1.5 M.M./MTR.
 ANGULARITY= $\pm 1.5^\circ$



SYMBOL OF QUALITY
 AN ISO 9001 COMPANY

JINDAL ALUMINIUM LTD.
 BANGALORE-560073 (INDIA)

	NAME	DATE
DRAWN	ASHUTOSH	10-05-2022
CHECKED		
APPROVED		

- ALL DIMENSIONS ARE IN mm.
- ROUND OFF ALL SHARP CORNERS WITH 0.40 mm.
- TOLERANCES WILL BE AS PER BS:EN-755-9, UNLESS OTHERWISE SPECIFIED

SCALE	2.5:1
AREA mm ²	140.15
PERIMETER mm.	155.61
WEIGHT kg/m	0.378

PARTY'S NAME	M/S. ANTARCTICA EQUIPMENT	DRAWING No.	SECTION No.
PARTY'S DRAWING No.	AS PER DRAWING	MAL-15101	
ALLOY & TEMPER	6063 T6	D6599	D6599
DESCRIPTION	INDUSTRIAL SECTION		